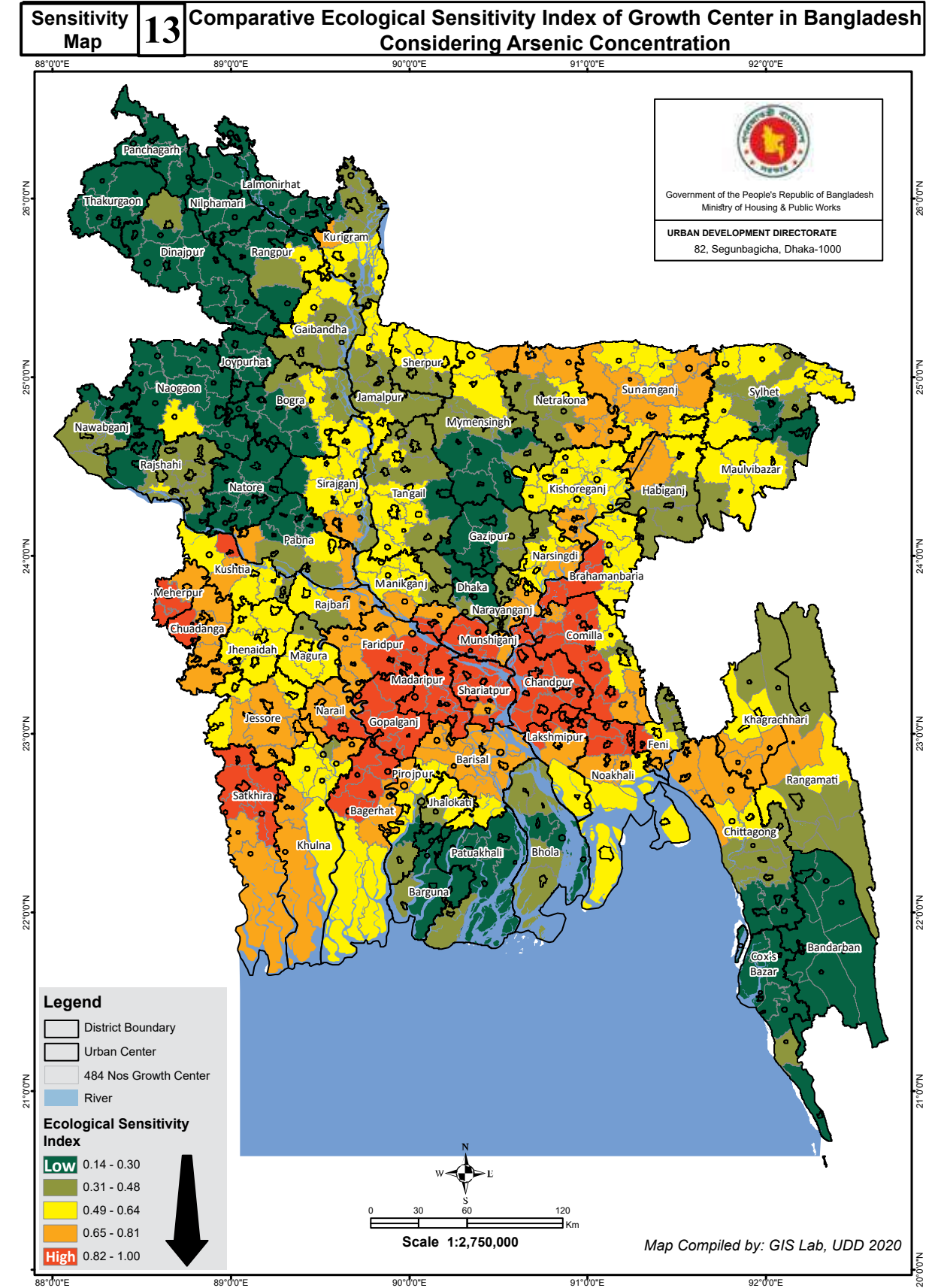
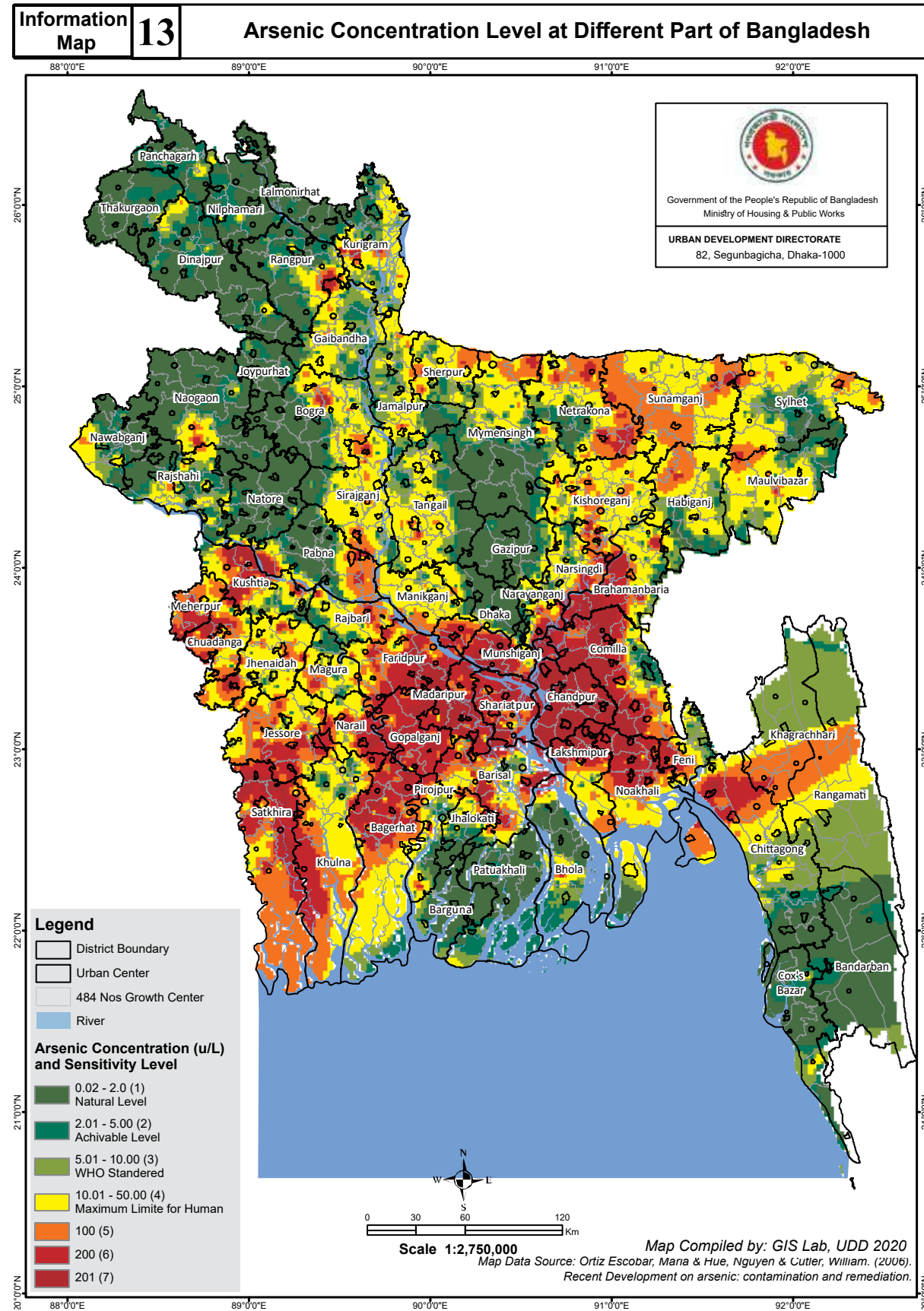
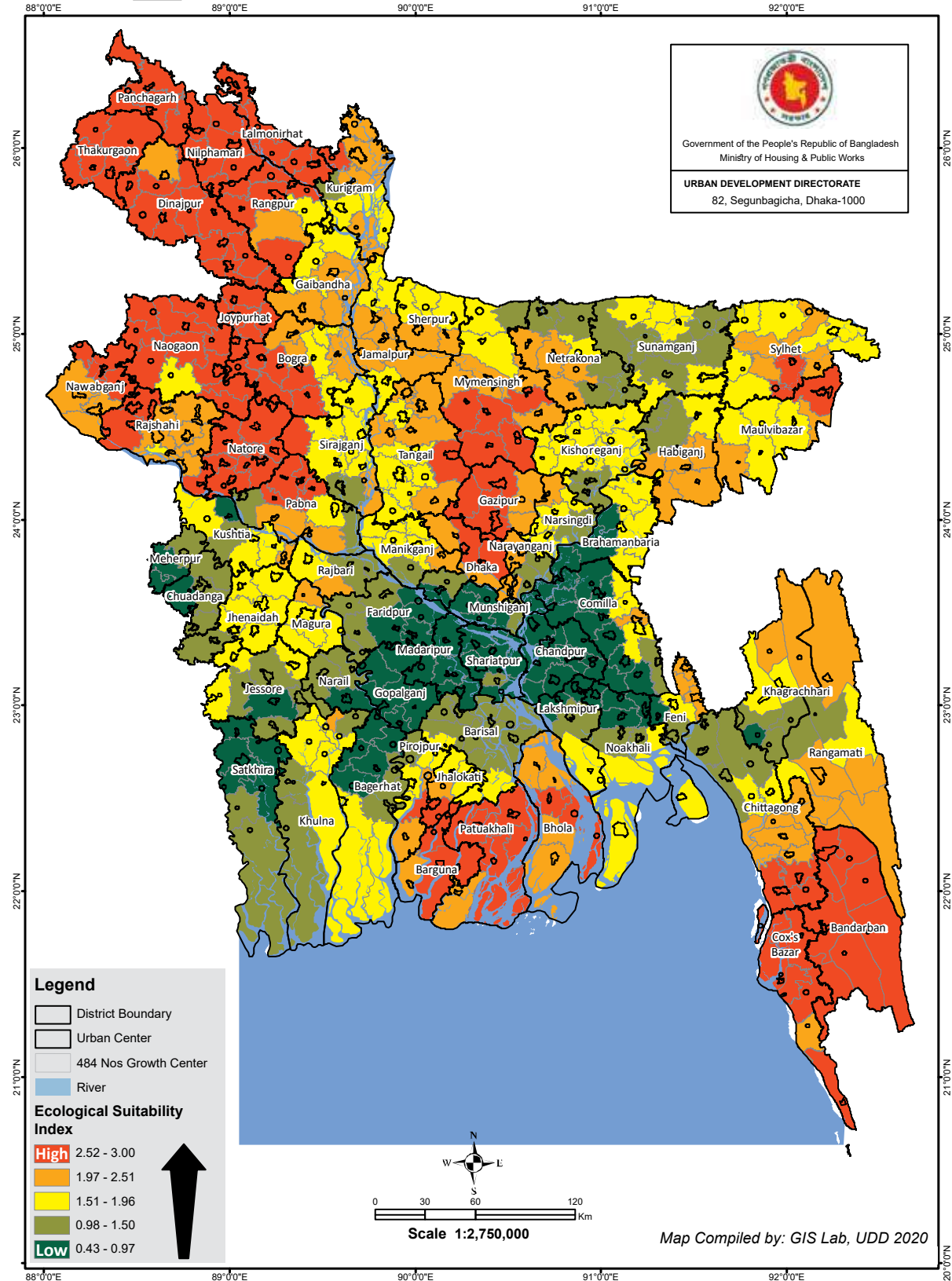


Ecological Variables : Arsenic



Suitability Map 13 Comparative Ecological Suitability Index of Growth Center in Bangladesh Considering Arsenic Cocentration



Index score and summery table of growth center Ecological suitability considering arsenic concentration

Suitability Chart No 13 (a): Growth Center Ecological Suitability Statistics Considering Arsenic Concentration

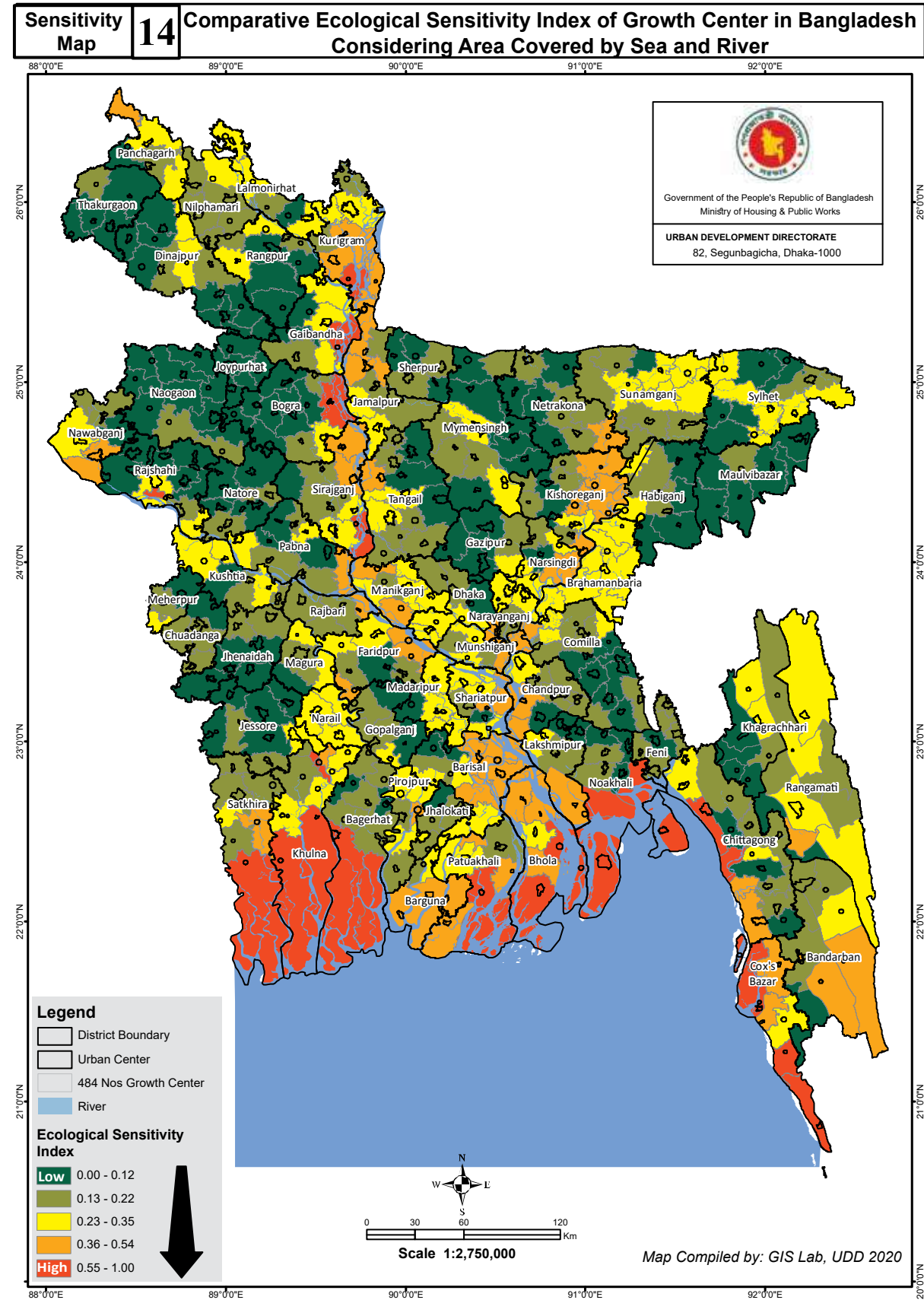
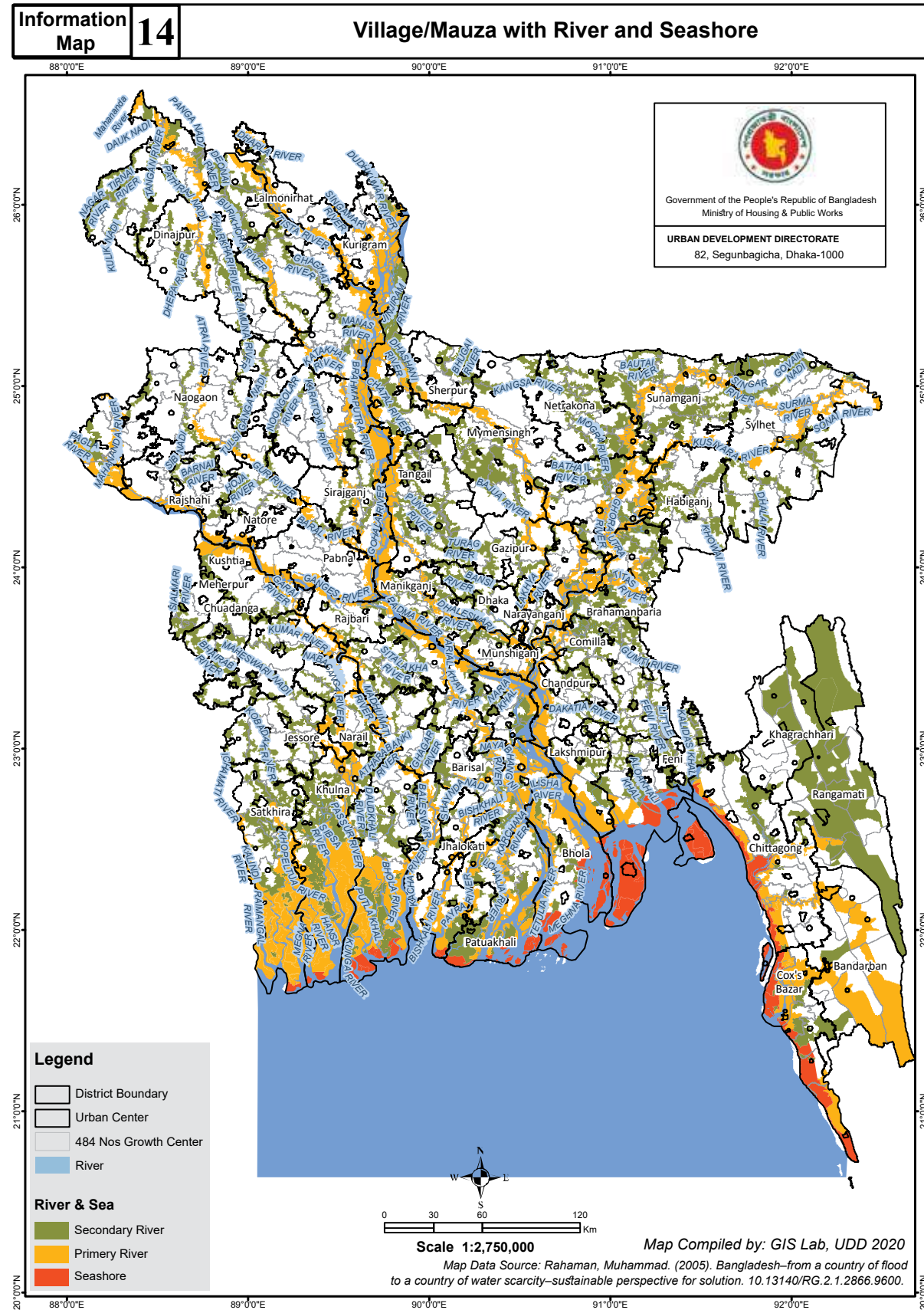
Arsenic Concentration and Ecological Suitability Index Score	Administrative Level	Growth Center (Nos)	Total Population 2011	(%)	Urban Population 2011	(%)	Area (SqKM)	(%)
Score: 0.43 - 0.97	District_HQ	7	2192374	1.53	509484	1.51	2080.32	1.43
	Paurashava_HQ	37	10893496	7.60	1483740	4.39	8614.42	5.92
	Upazilla_HQ	26	5134951	3.58	363972	1.08	5177.89	3.56
Score: 0.98 - 1.50	City Corporation HQ	1	527017	0.37	339308	1.00	308.12	0.21
	District_HQ	8	3724368	2.60	969743	2.87	2800.60	1.92
	Paurashava_HQ	36	9763110	6.81	1408662	4.17	9934.48	6.83
Score: 1.51 - 1.96	Upazilla_HQ	29	5611406	3.92	351509	1.04	11577.54	7.95
	City Corporation HQ	4	1745375	1.22	1422457	4.21	392.14	0.27
	District_HQ	15	5893477	4.11	1624390	4.80	4294.29	2.95
Score: 1.97 - 2.51	Paurashava_HQ	54	15092236	10.53	1869758	5.53	18893.25	12.98
	Upazilla_HQ	47	9921259	6.92	624374	1.85	12498.13	8.59
	City Corporation HQ	7	7042218	4.91	4874828	14.41	1331.60	0.91
Score: 2.52 - 3.00	District_HQ	11	4795573	3.35	1468500	4.34	4117.44	2.83
	Paurashava_HQ	49	14650255	10.22	1958790	5.79	16772.00	11.52
	Upazilla_HQ	28	4950400	3.45	385435	1.14	7669.25	5.27
Score: 2.52 - 3.00	CAP	1	8747042	6.10	8747042	25.86	305.84	0.21
	City Corporation HQ	2	2538577	1.77	990070	2.93	778.99	0.54
	District_HQ	12	4367656	3.05	1114367	3.30	4396.79	3.02
Score: 2.52 - 3.00	Paurashava_HQ	62	17390357	12.13	2617886	7.74	19705.06	13.54
	Upazilla_HQ	48	8340587	5.82	694909	2.05	13899.16	9.55
Grand Total		484	143321734	100.00	33819224	100.00	145547.31	100.00

Data Compiled by GIS Lab UDD, 2020

Suitability Chart No 13 (b): Name of Growth Center and Ecological Suitability Considering Arsenic Concentration

Arsenic Concentration and Ecological Suitability Index Score	Administrative Level	Growth Center (Nos)	Name of Growth Center
Score: 0.43 - 0.97	District_HQ	7	Bagerhat Sadar, Chandpur Sadar, Gopalganj Sadar, Madaripur Sadar, Meherpur Sadar, Satkhira Sadar, Shariatpur Sadar
	Paurashava_HQ	37	Barura, Begumganj (Chowmuhani), Bhanga, Bhedarganj, Bheramara, Chandina, Chatkhil, Daganbhuiyan, Darshana (Damurhuda), Daudkandi, Debidwar, Dohar, Faridganj, Haziganj, Homna, Kachua Chandpur, Kalaroa, Kalia, Kalkini, Kotalipara, Laksam, Manirampur, Matlab Dakshin, Matlab Uttar (Sengarchar), Muksudpur, Nabinagar, Nagarkanda, Nangalkot, Naria, Raipur, Ramganj, Senbagh, Shahrasti, Shib Char, Sonaimuri, Tungipara, Zanjira
	Upazilla_HQ	26	Ashuganj, Assasuni, Banchharampur, Char Bhadraran, Chitalmari, Debhata, Fakirhat, Gazaria, Gosairhat, Haimchar, Kashiani, Lohajang, Manikchhari, Meghna, Mollahat, Monoharganj, Mujibnagar, Muradnagar, Rajoir, Rampal, Sadarpur, Serajdikhan, Sreenagar, Tala, Titash, Tongibari
Score: 0.98 - 1.50	City Corporation HQ	1	Barisal Sadar (BCC)
	District_HQ	8	Chuadanga Sadar, Faridpur Sadar, Jashore Sadar, Lakshimpur Sadar, Munshiganj Sadar & Mirkadim, Narail Sadar, Noakhali Sadar, Rajbari Sadar
	Paurashava_HQ	36	Abhaynagar, Alamdanga, Bajitpur, Bera, Bhairab, Boalmari, Chaudagram, Chhatak, Damudya, Derai, Durgapur Netrakona, Gangni, Gaurnadi, Goalandaghat, Ishwardi, Jhikargachha, Jibannagar, Kabirhat, Keshabpur, Kuliar Char, Lohagara Narail, Madan, Maheshpur, Mehendiganj, Mirpur Kushtia, Mirsharai (Barairhat), Mohanganj, Morrelganj Bagerhat, Muladi, Paikgachha, Ramgarh, Raypura, Shahjadpur, Sitakunda, Sonagazi, Sonargaon
Score: 0.98 - 1.50	Upazilla_HQ	29	Agailjhara, Alfadanga, Araihasar, Babuganj, Baniachong, Dharampasha, Dhobaura, Dowarabazar, Fatikchhari, Harirampur, Hizla, Jamalganj, Kachua Bagerhat, Kaliganj Satkhira, Kalmakanda, Khaliajuri, Koyra, Lakshnichhari, Langadu, Madhukhali, Mahalchhari, Naniarchar, Nawabganj Dhaka, Nazirpur, Rajarhat, Shyamnagar, South Sunamganj, Terokhada, Wazirpur

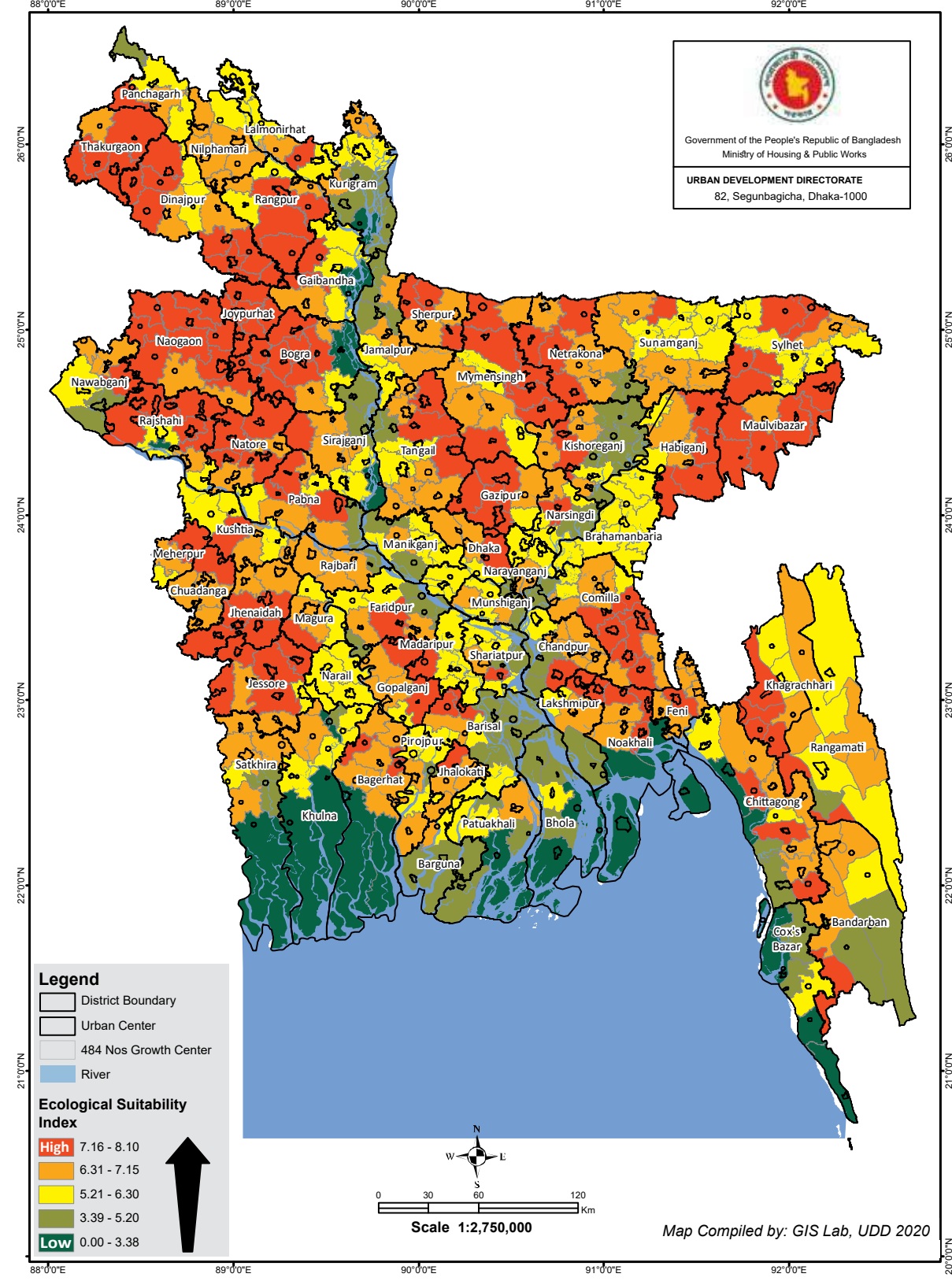
Ecological Variables : River & Sea



Ecological Variables : River & Sea

Index score and summary table of growth center Ecological suitability considering River and Seashore

Suitability Map 14 Comparative Ecological Suitability Index of Growth Center in Bangladesh Considering Major River & Seashore



Suitability Chart No 14 (a): Growth Center Ecological Suitability Statistics Considering River and Seashore

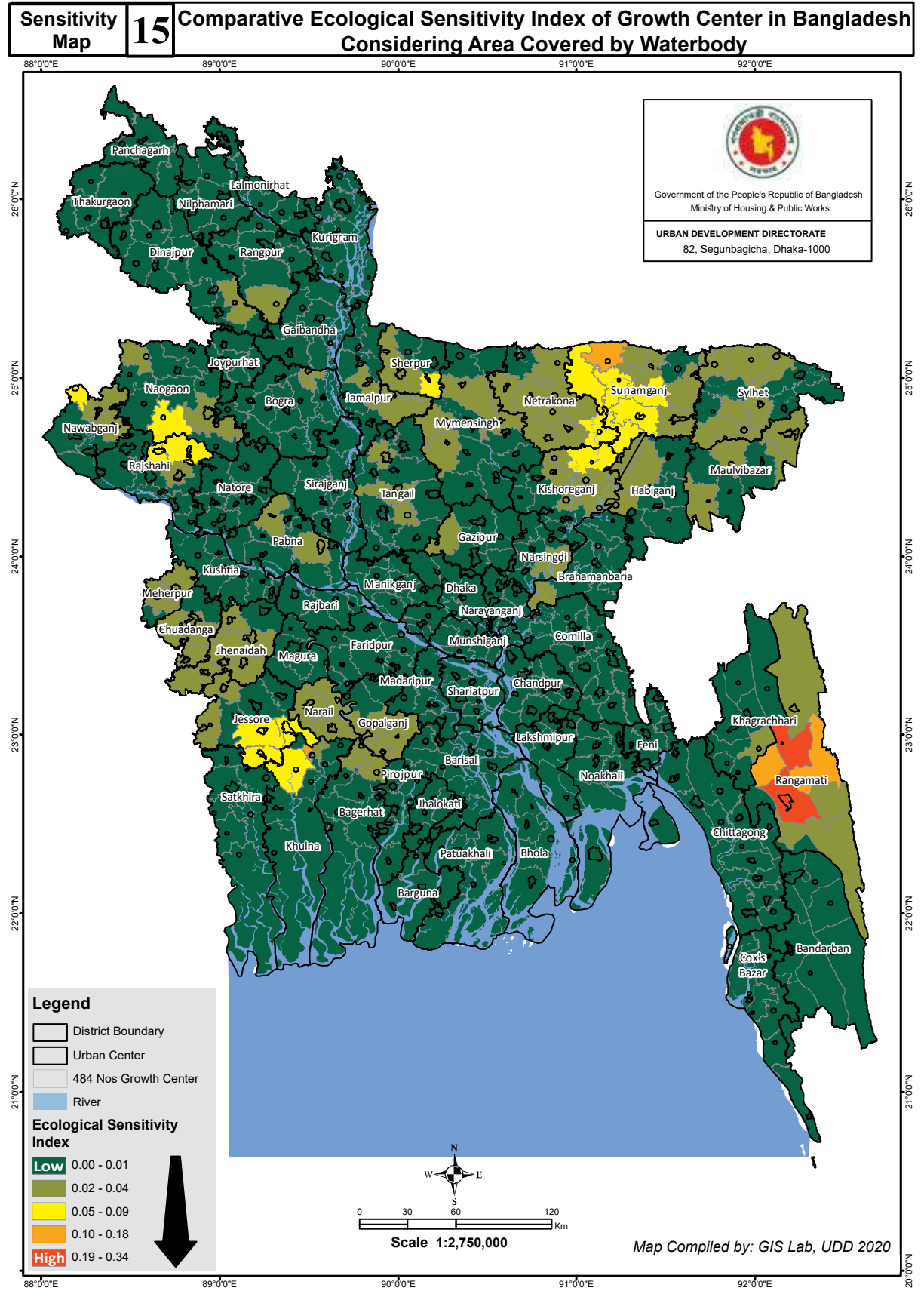
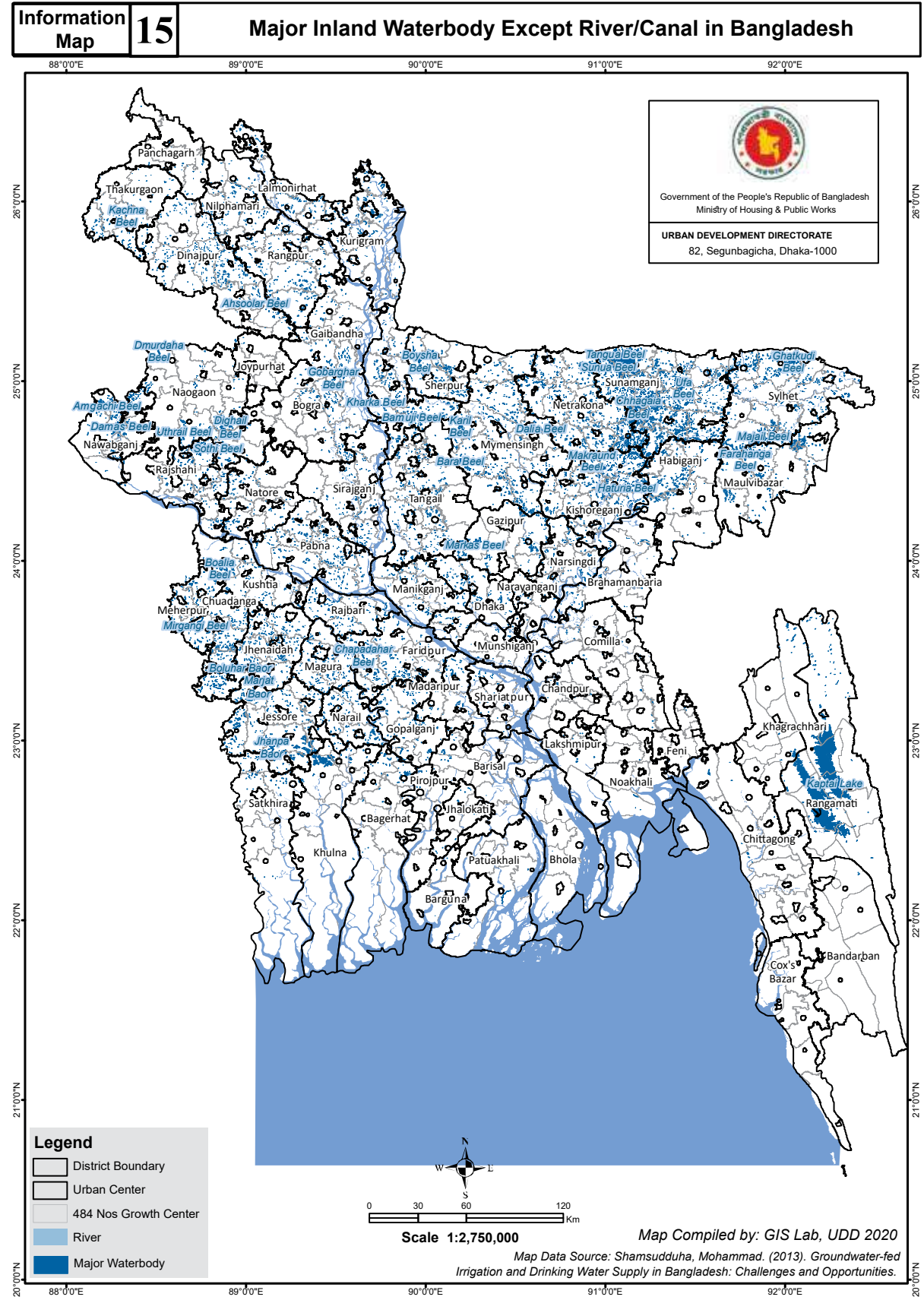
River/Seashore and Ecological Suitability Index Score	Administrative Level	Growth Center (Nos)	Total Population 2011	(%)	Urban Population 2011	(%)	Area (SqKM)	(%)
Score: 0.00 - 3.38	City Corporation HQ	4	4522983	3.16	4436474	13.12	300.26	0.21
	Paurashava_HQ	11	3332664	2.33	434681	1.29	8275.46	5.69
	Upazilla_HQ	12	2076739	1.45	239205	0.71	7110.28	4.89
Score: 3.39 - 5.20	City Corporation HQ	2	1850617	1.29	882398	2.61	409.98	0.28
	District_HQ	7	3015019	2.10	942806	2.79	2404.39	1.65
	Paurashava_HQ	20	5640691	3.94	791407	2.34	7089.68	4.87
	Upazilla_HQ	26	3295704	2.30	290364	0.86	6985.18	4.80
Score: 5.21 - 6.30	City Corporation HQ	2	1414971	0.99	726465	2.15	695.11	0.48
	District_HQ	15	5405528	3.77	1536529	4.54	4801.78	3.30
	Paurashava_HQ	51	14483860	10.11	2192418	6.48	14669.72	10.08
	Upazilla_HQ	49	10304689	7.19	714911	2.11	11992.96	8.24
Score: 6.31 - 7.15	City Corporation HQ	1	312841	0.22	166291	0.49	53.01	0.04
	District_HQ	19	7322747	5.11	1724782	5.10	6514.97	4.48
	Paurashava_HQ	71	21004150	14.66	3079412	9.11	18854.24	12.95
	Upazilla_HQ	50	9781230	6.82	641562	1.90	14045.73	9.65
Score: 7.16 - 8.10	CAP	1	8747042	6.10	8747042	25.86	305.84	0.21
	City Corporation HQ	5	3751775	2.62	1415035	4.18	1352.50	0.93
	District_HQ	12	5230154	3.65	1482367	4.38	3968.29	2.73
	Paurashava_HQ	85	23328089	16.28	2840918	8.40	25030.10	17.20
Total	Upazilla_HQ	41	8500241	5.93	534157	1.58	10687.83	7.34
Total		484	143321734	100.00	33819224	100.00	145547.31	100.00

Data Compiled by GIS Lab UDD, 2020

Suitability Chart No 14 (b): Name of Growth Center and Ecological Suitability Considering River and Seashore

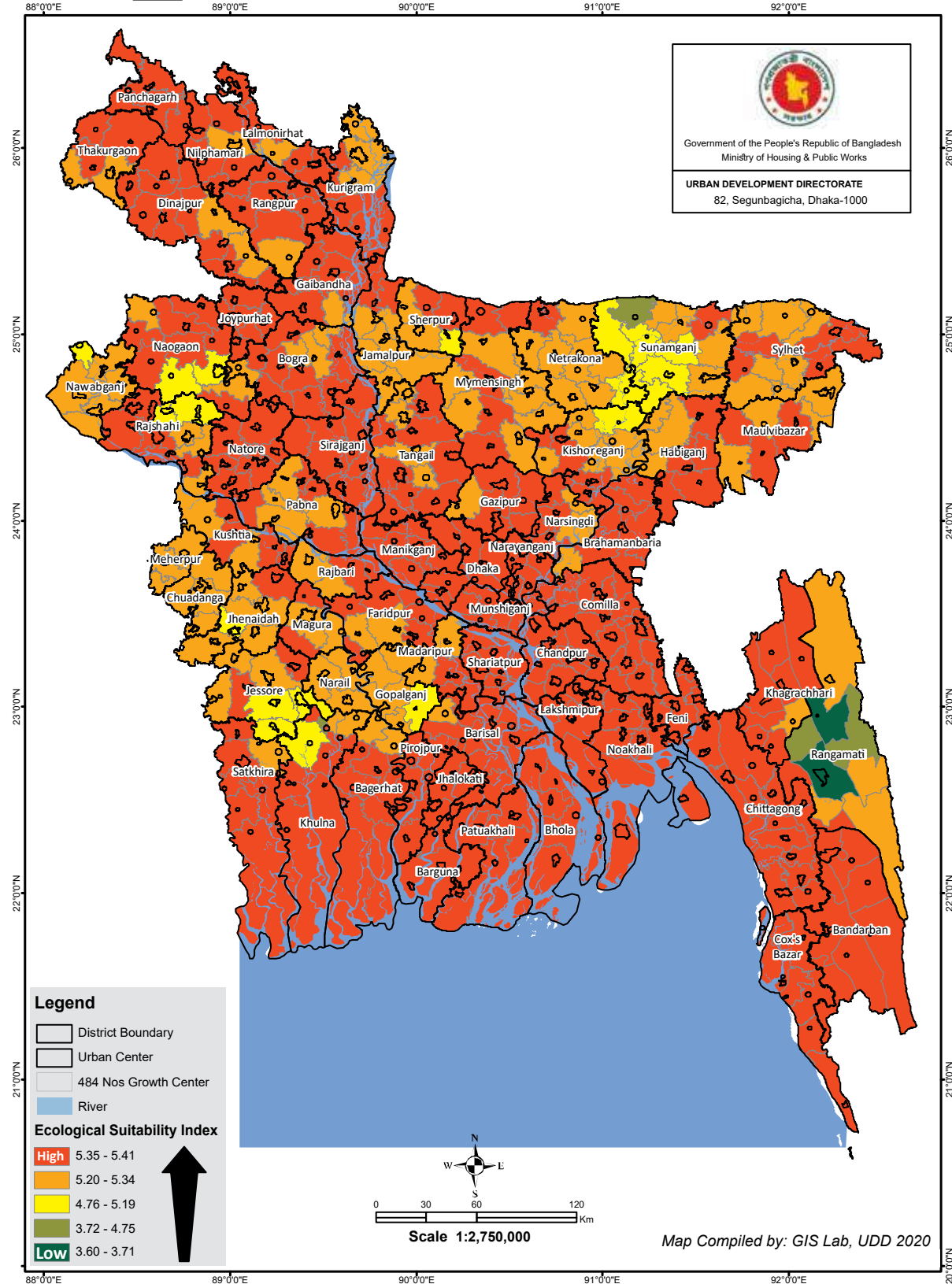
River/Seashore and Ecological Suitability Index Score	Administrative Level	Growth Center (Nos)	Name of Growth Center
Score: 0.00 - 3.38	City Corporation HQ	4	Chattogram City (CCC), Khan Jahan Ali (KCC), Khulna Sadar (KCC), Rajshahi Sadar (RCC)
	Paurashava_HQ	11	Chalna (Dacope), Char Fasson, Companiganj (Bashurhat) Noakhali, Galachipa, Hatiya, Maheshkhali, Mongla, Sandwip, sariakandi, Sitakunda, Teknaf
	Upazilla_HQ	12	Chauhali, Chilmari, Fulchhari, Koyra, Kutubdia, Manpura, Pekua, Sarankhola, Shyamnagar, Subarnachar, Tazumuddin, Ukhiya
Score: 3.39 - 5.20	City Corporation HQ	2	Barisal Sadar (BCC), Narayanganj Sadar (NCC) & Shiddhirganj
	District_HQ	7	Barguna Sadar, Bhola Sadar, Chandpur Sadar, Cox's Bazar Sadar, Kurigram Sadar, Nawabganj Sadar, Sirajganj Sadar
	Paurashava_HQ	20	Amtali, Banshkhal, Bera, Bhairab, Bhedarganj, Bhuapur, Chakaria, Daulat Khan, Dewanganj, Goalandaghat, Islampur, Kalapara & Kuakata, Kazipur, Lal Mohan, Mehendiganj, Muladi, Patharghata, Ramgati, Raypura, Ulipur
	Upazilla_HQ	26	Alfadanga, Alikadam, Anowara, Assasuni, Austagram, Char Bhadrason, Char Rajibpur, Dashmina, Daulatpur Manikganj, Dighalia, Dumki, Gazaria, Haimchar, Harirampur, Hizla, Itna, Kaptai, Kawkhali Pirojpur, Khaliyari, Meghna, Mithamain, Nikli, Raumari, Sadarpur, Tentulia, Thanchi
Score: 5.21 - 6.30	City Corporation HQ	2	Mymensingh Sadar (MCC), Sylhet Sadar (Sylhet CC)
	District_HQ	15	Brahmanbaria Sadar, Faridpur Sadar, Gaibandha Sadar, Khagrachhari Sadar, Lalmonirhat Sadar, Madaripur Sadar, Manikganj Sadar, Munshiganj Sadar & Mirkadim, Narail Sadar, Narsingdi Sadar & Madhabdi, Panchagarh Sadar, Patuakhali Sadar, Rangamati Sadar, Sunamganj Sadar, Tangail Sadar
	Paurashava_HQ	51	Abhaynagar, Ajmiriganj, Akhaura, Badarganj, Bagha & Arani, Baghai Chhari, Bajitpur, Bakerganj, Banaripara, Beanibazar, Belkuchi, Betagi, Bheramara, Burhanuddin, Chhatak, dhunat, Dohar, Faridpur, Gaffargaon, Ghorashal (Palash), Golabganj, Homna, Ishwardi, Kalia, Kaliganj Gazipur, Kalihati, Kalkini, Kasba, Kumarkhali, Lohagara Narail, Madarganj, Matlab Uttar (Sengarchar), Mirsharai (Baraiarhat), Nabinagar, Nageshwari, Naria, Nesarabad (Swarupkati), Paikgachha, Patgram, Poba & Katakhal & Noahata, Raipur, Rugganj & Kanchan, Sarishabari, Shahjadpur, Shib Char, Shibganj Nawabganj, Singair, Sundarganj, Tungipara, Zakiganj, Zanjira
	Upazilla_HQ	49	Araihazar, Ashuganj, Babuganj, Banacharampur, Batiaghata, Belabo, Belai Chhari, Bhandaria, Boalkhali, Brahman Para, Chiribandar, Companiganj Sylhet, Daulatpur Kushtia, Debhata, Debiganj, Dimla, Dowarabazar, Fenchuganj, Gangachara, Gosairhat, Hatibandha, Jamalganj, Keraniganj, Khansama, Lakhai, Langadu, Lohajang, Madhukhali, Mirzaganj, Mohammadpur, Morrelganj (Zianagar) Pirojpur, Mujibnagar, Nasirnagar, Nawabganj Dhaka, Nazirpur, Panchhari, Phulbari, Ramu, Ruma, Rupsa, Saghatta, Sarail, Saturia, Serajdikhan, Shibalaya, South Sunamganj, Sreepur Magura, Terokhada, Titash

Ecological Variables : Waterbody



Ecological Variables : Waterbody

Suitability Map 15 Comparative Ecological Suitability Index of Growth Center in Bangladesh Considering Area Covered by Waterbody



Index score and summary table of growth center Ecological suitability considering Waterbody

Suitability Chart No 15(a): Growth Center Ecological Suitability Statistics Considering Waterbody

Waterbody and Ecological Suitability Index Score	Administrative Level	Growth Center (Nos)	Total Population 2011	(%)	Urban Population 2011	(%)	Area (SqKM)	(%)
Score: 0.00 - 3.38	Upazilla_HQ	1	81548	0.06	11391	0.03	494.80	0.34
	City Corporation HQ	1	81313	0.06	6930	0.02	31.75	0.02
Score: 3.72 - 4.75	District_HQ	1	124728	0.09	84000	0.25	585.26	0.40
	Upazilla_HQ	2	258816	0.18	15642	0.05	642.33	0.44
Score: 4.76 - 5.19	District_HQ	1	405148	0.28	150549	0.45	278.88	0.19
	Paurashava_HQ	9	2262820	1.58	330055	0.98	2599.48	1.79
Score: 5.20 - 5.34	Upazilla_HQ	10	1770020	1.23	107850	0.32	3725.50	2.56
	City Corporation HQ	1	253388	0.18	17064	0.05	186.74	0.13
	District_HQ	16	6864133	4.79	1980913	5.86	5726.35	3.93
	Paurashava_HQ	62	17741413	12.38	2277555	6.73	19866.68	13.65
Score: 5.35 - 5.41	Upazilla_HQ	44	8417641	5.87	582836	1.72	11880.08	8.16
	CAP	1	8747042	6.10	8747042	25.86	305.84	0.21
	City Corporation HQ	12	11518486	8.04	7602669	22.48	2592.37	1.78
	District_HQ	35	13579439	9.47	3471022	10.26	11098.94	7.63
Score: 5.35 - 5.41	Paurashava_HQ	167	47785221	33.34	6731226	19.90	51453.05	35.35
	Upazilla_HQ	121	23430578	16.35	1702480	5.03	34079.26	23.41
Total		484	143321734	100.00	33819224	100.00	145547.31	100.00

Data Compiled by GIS Lab UDD, 2020

Suitability Chart No 15 (b): Name of Growth Center and Ecological Suitability Considering Waterbody

Waterbody and Ecological Suitability Index Score	Administrative Level	Growth Center (Nos)	Name of Growth Center
Score: 3.60 - 3.71	Upazilla_HQ	1	Langadu
	City Corporation HQ	1	Khan Jahan Ali (KCC)
Score: 3.72 - 4.75	District_HQ	1	Rangamati Sadar
	Upazilla_HQ	2	Naniarchar, Tahirpur
Score: 4.76 - 5.19	District_HQ	1	Naogaon Sadar
	Paurashava_HQ	9	Abhaynagar, Bhabanigonj (Baghmara) & Tahirpur, Derai, Keshabpur, Kesharhat (Mohanpur), Kotalipara, Kotchandpur, Manirampur, Nakla
Score: 5.20 - 5.34	Upazilla_HQ	10	Barkal, Bholahat, Dharampasha, Dumuria, Itna, Jamalganj, Khaliajuri, Manda, South Sunamganj, Sulla
	City Corporation HQ	1	South Surma (Sylhet CC)
	District_HQ	16	Bogura Sadar, Chuadanga Sadar, Gopalganj Sadar, Jamalpur Sadar, Jashore Sadar, Jhenaidaha Sadar, Kurigram Sadar, Kushtia Sadar, Magura Sadar, Meherpur Sadar, Narail Sadar, Nawabganj Sadar, Netrokona Sadar, Pabna Sadar, Sherpur Sadar, Sunamganj Sadar
	Paurashava_HQ	62	Adamdighi, Ajmiriganj, Alamdanga, Atgharia, Bagha & Arani, Baghai Chhari, Barlekha, Benapole (Sharsha), Boalmari, Chatmohar, Chaugachha, Chhatak, Darshana (Damurhuda), Dhanbari, Durgapur Rajshahi, Fulbaria, gabtali, Gangni, Gauripur, Golabganj, Gopalpur, Harinakunda, Ishwarganj, Islampur, Jagannathpur, Jaldhaka, Jibannagar, Kalia, Kaliakair, Kaliganj Jhenaidah, Kalihati, Karimganj, Kendua, Lohagara Narail, Madan, Madarganj, Maheshpur, Melandaha, Mohanganj, Muksudpur, Muktagachha, Nachole, Nagarkanda, Nageshwari, Nandail, Pakundia, Pangsha, Parbatipur, Phulpur, Pirganj Thakurgaon, Purbadhala, Puthia, Rahanpur (Gomastapur), Raypura, Santhia, Sarishabari, Shib Char, Shibganj Nawabganj, Sonatola, Sreebardi, Sreemangal, Tungipara
Score: 5.20 - 5.34	Upazilla_HQ	44	Agailjhara, Atpara, Austagram, Balaganj, Balia Kandi, Banchhampur, Baniachong, Barhatta, Basail, Belabo, Belai Chhari, Bhurungamari, Bishwambarpur, Chitalmari, Companiganj Sylhet, Daulatpur Kushtia, Dighalia, Fenchuganj, Gowainghat, Haripur, Jaintiapur, Jurai Chhari, Juri, Kaliganj Lalmonirhat, Kalmakanda, Kaptai, Kashiani, Lakhai, Mahatchhari, Mithamain, Mohammadpur, Mollahat, Mujibnagar, Nawabganj Dinajpur, Nikli, Pirganj Rangpur, Rajnagar, Rajoir, Raninagar, Saghatta, Sapahar, Tala, Tarail, Terokhada

Ecological Variables : Forest

