

Chapter 3

Urban Infrastructure & Related Service

- Re-defining Infrastructure & Service Variable
- Education, Health and Religious Services
- Agricultural and Emergency Services
- Rural Economy Related Infrastructure
- Water Based Communication Services after Road
- Rail Communication Services
- Road Connectivity
- Airport Proximity
- Seaport Proximity
- Capital Proximity
- Administrative Level
- Urban Population
- Urban Infrastructure & Service Suitability

Infrastructure and Services Variables

This chapter of the study is a compilation of infrastructure and service information of 484 growth centers. Mega infrastructure construction and massive development initiatives have been undertaken by the government since the liberation of the country. Population has been increased more than two fold, but extreme poverty has nearly been eradicated in past 4 decades. Agricultural production is three fold higher than post liberation period and non-agricultural economy is booming at higher pace. In 2018, service sector alone contributed 56.46% of total GDP where agriculture contributed only 14.77% in 2018. Along with the economic transformation, urbanization or inequity of development activity imaged as new concern in the country at the dawn of the new millennium. The capital Dhaka is the only mega city of the country. It inhabits more than 3 (three) times larger population than the 2nd largest city, Chattogram. This chapter synthesizes theoretical and conceptual aspects of infrastructure-service suitability considering the current status of growth centers of Bangladesh. Indicators which ensure the urban functions of a cities were selected for this chapter. Different weight factors have been incorporated for these variables. Only snow ball sampling method has been used to identify the key persons to survey. About 30 senior experienced and prominent urban planners have been identified and the weightage values fixed as average figure are coming from their voices during the survey. These values or scores are put into the UDD Master plan, LGED, BBS database and prepare the final output-map of growth center readiness. So, both primary and secondary data have been used to develop the understanding level of the scholars that what, why and how the growth center areas ready to take the increased number of populations. Generally, in Bangladesh a few indicators are being used to define a city. The indicators which are used in this chapter

are administrative/city category, population, connectivity, close to center and services & facilities. Based on the level or status of these features anybody can understand the suitability level that is why these indicators or categories have been selected for this chapter. Based on the recommendations of the senior urban planners the values against each category has been fixed. Broad and detail category wise values were being fixed by the whole participants. The result is given below.

Table 08: Weighted factor for each infrastructure and service variable

SI No.	Board Category	Score	Component	Sub-Component	Assigned Value
1	Utmost Administration/City Category	15 15	Capital (Mega City)		15
			City Corporation (Metropolitan)		10
			District HQ (City)		7
			Paurashava (Town)		4
			Upazila HQ (Growth Center)		1
2	Population	25	Population		25
3	Connectivity	15	Road	National Highway	5
				Regional Highway	2
				Other Road	1
			Rail	Rail Station	5
			River	River Port	5
4	Close to Center	15	Close to Capital		5
			Close to sea port		5
			Close to international Airport		1

The broad categories and detail categories were explored during survey. The broad categories are Capital (Mega city), City Corporation (Metropolitan), District HQ (City), Paurashava (Town) and Upazila HQ (Growth center) Under administrative/city category. As the capital city Dhaka can't be compared to any other city that is why it has been marked as mega city. One of the main categories is economy database to understand the city readiness. But, this is not possible and, in that case, population counted as a proxy variable due to data unavailability. Because where economy is strong population will be high there. So, population is one of the main categories got an important score 25. Population and close to center are two categories which are continuous. The method of calculating the weighted scores for these variables are described in the following subsections. Service and facilities are categorized in detail. Population and Close to center are two continuous variables. In case of population the highest population was scored as 25 and the lowest as 1. Based on this, for any population size the score is pared through an equation developed in MS Excel. Similarly, in case of close to center under each broad category distance wise scores were also fixed by an equation used in MS Excel. This time distance was extracted using network analysis from the speed limits of different roads mentioned in the Roads and Highways (RHD), Bangladesh. The respective figures for these two variables given below as sample.

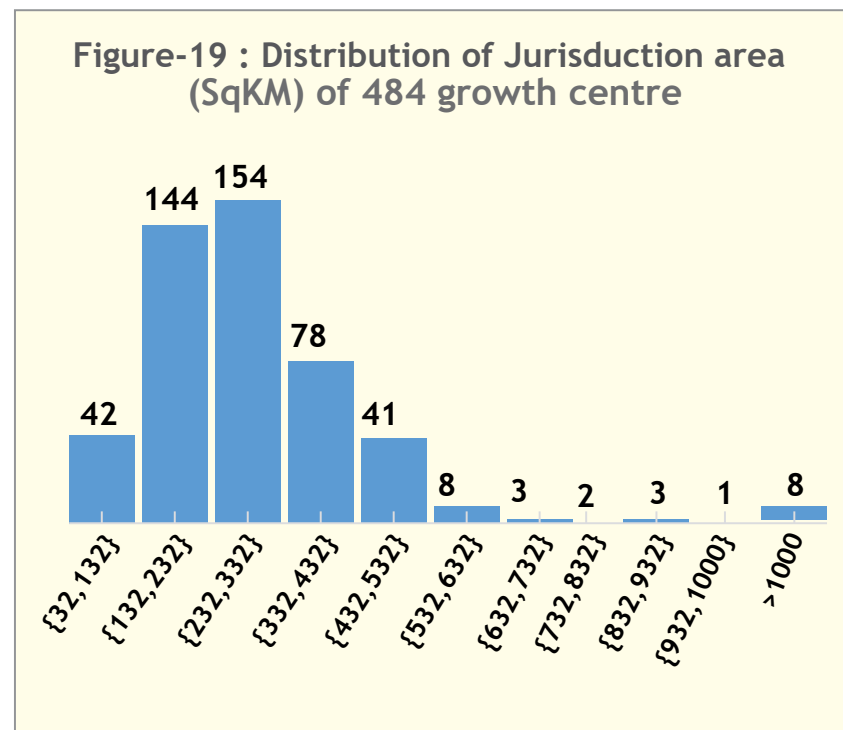
Services and facilities are categorized into five sub-categories which are water based communication, rural economy, agriculture & emergency and education, health & social services. Total score 30 where water based communication gets 15% weightage, rural economy 27%, agriculture & emergency 15%, education, health & social service 43% which is the highest. Category wise scores are shown in the following table.

Table 09: Component and respective value of each infrastructure and service variable

Category	Score	Board Category	Detail Category	Assign Value
Services and Facilities	4.5	Water Based Communication	Ferry Ghat	0.75
			Steamer Ghat	0.75
			Helipad	0.75
			Launch Ghat	0.75
			Post Office	0.75
			Telegraph Office	0.75
	8.1	Rural Economy	Cold Storage	1.92
			Food Godown	1.38
			Growth Centre	1.38
			Rural Market	1.38
			Gasfield	1.98
	4.5	Agriculture and Emergency	Historical Place	0.68
			Deep Tube Well	0.38
			Graveyard	0.38
			Low Lift Pump	0.38
			Police Station	0.38
			Shallow Tube Well	0.38
			Tank/Pond	0.38
			Cluster Village	0.38
			Cyclone Shelter	0.38
			Proposed Cyclone Shelter	0.38
			Under Construction CY. Cent	0.38
	12.9	education, health & social service	College	1.5
			Hospital	1.5
			University	2.5
			Vocational Institute	1.2
			Community Clinic	1
Family Welfare Center			1	
High School			1.2	
Madrasha			1	
Mosque/Eidgah/Charge			1	
Primary School	1			

Re-defining Infrastructure & Service Variable

Later the team redefined the indicators from productivity view point. All the indicators are indicative variable for allocation of four factors of production. Apex administration level is indicative variable for the level of entrepreneurship and urban population is indicative variable of labour supply in a growth center. Rest of the nine variables are considered as indicative variable of capital allocation. Capital is the most complex factor of production and very difficult to assess. Number of indicators can use as capital indicative variable for a growth center. But considering data availability these nine variable are selected and they can be grouped as social service indicative, connectivity indicative and proximity indicative variables. The first and most important factor of production is allocation of land which is excluded from the study. Because the allocation of land in growth center is nearly equal in Bangladesh. Most of the lands are flat and productive except the hill track region of the country. So, jurisdiction area of a growth center represents the allocation of the land. The graph shows the distribution of jurisdiction area of 484 growth centers. It also shows that only 25 (5.1%) growth centers have area over 532 SqKM and only 42 (8.7%) have less than 132 SqKM. So 417 (86.2%) growth centers have jurisdiction area between 132 to 532 SqKM. This study considers that the land resource is equally distributed among the growth centers and its variability has very little effect for this study purpose.



The chart below shows the 11 variables and their considering factors.

Figure 20: Infrastructure-service variable as production factor

From economic point of view, following eleven (11) infrastructure-service variable can assess potential productivity of a growth center. Higher the productivity potential indicate higher infrastructure-service suitability in this research

Eleven Variables	
Capital indicative variable	1) Education Health and Religious Services Social Service indicator
	2) Agriculture and Emergency Services
	3) Rural Economy related Infrastructure
	4) Water based Communication Services
Connectivity indicative variable	5) Rail communication Services
	6) Road Connectivity
	7) Airport Proximity Proximity Indicator
Proximity indicative variable	8) Seaport Proximity
	9) Capital Proximity
	Entrepreneurship indicative variable
Labor indicative variable	
	Land indicative variable

Finally, urban suitability considering Infrastructure and services for each growth center is calculated using the formula below,

Equation 1

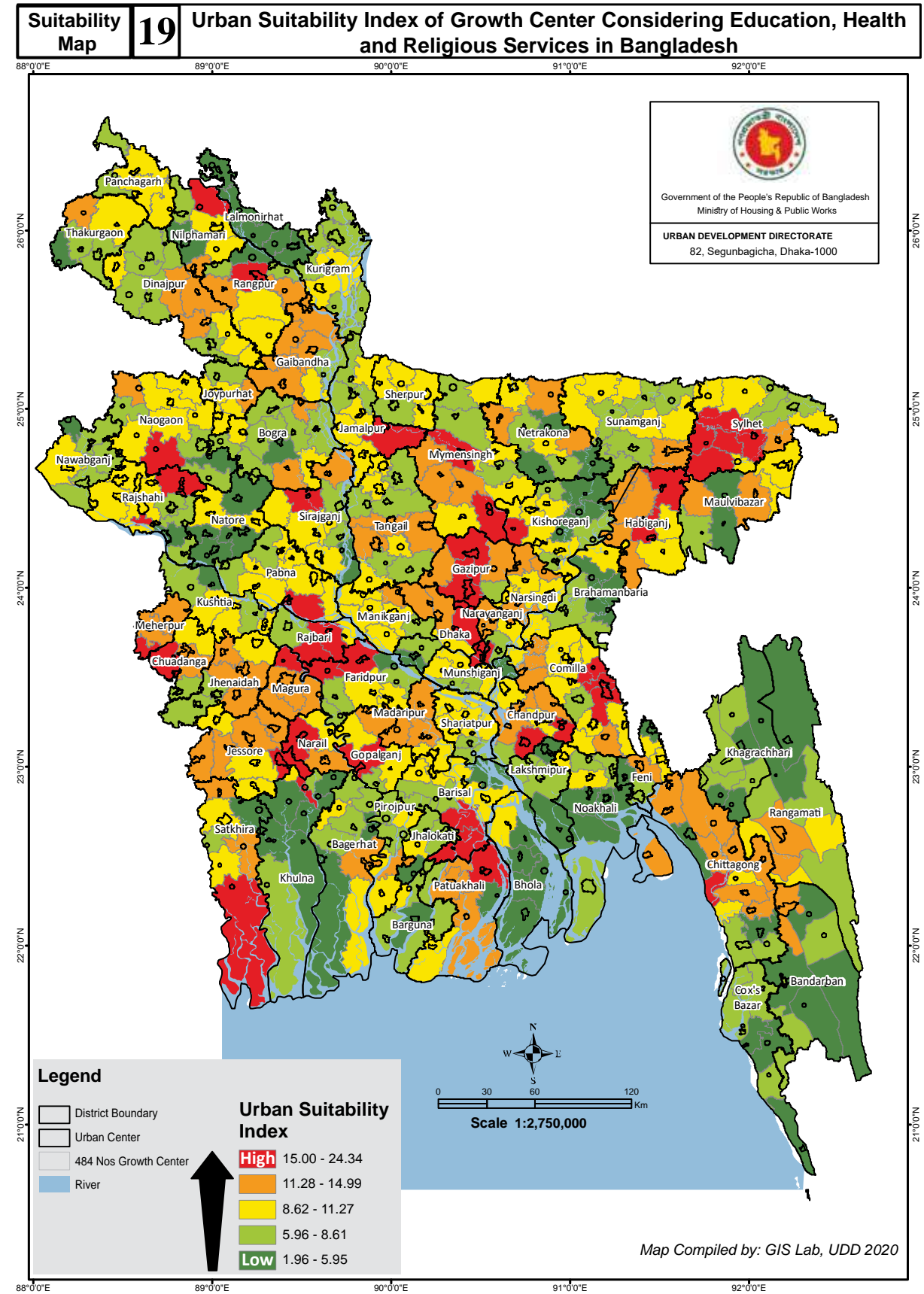
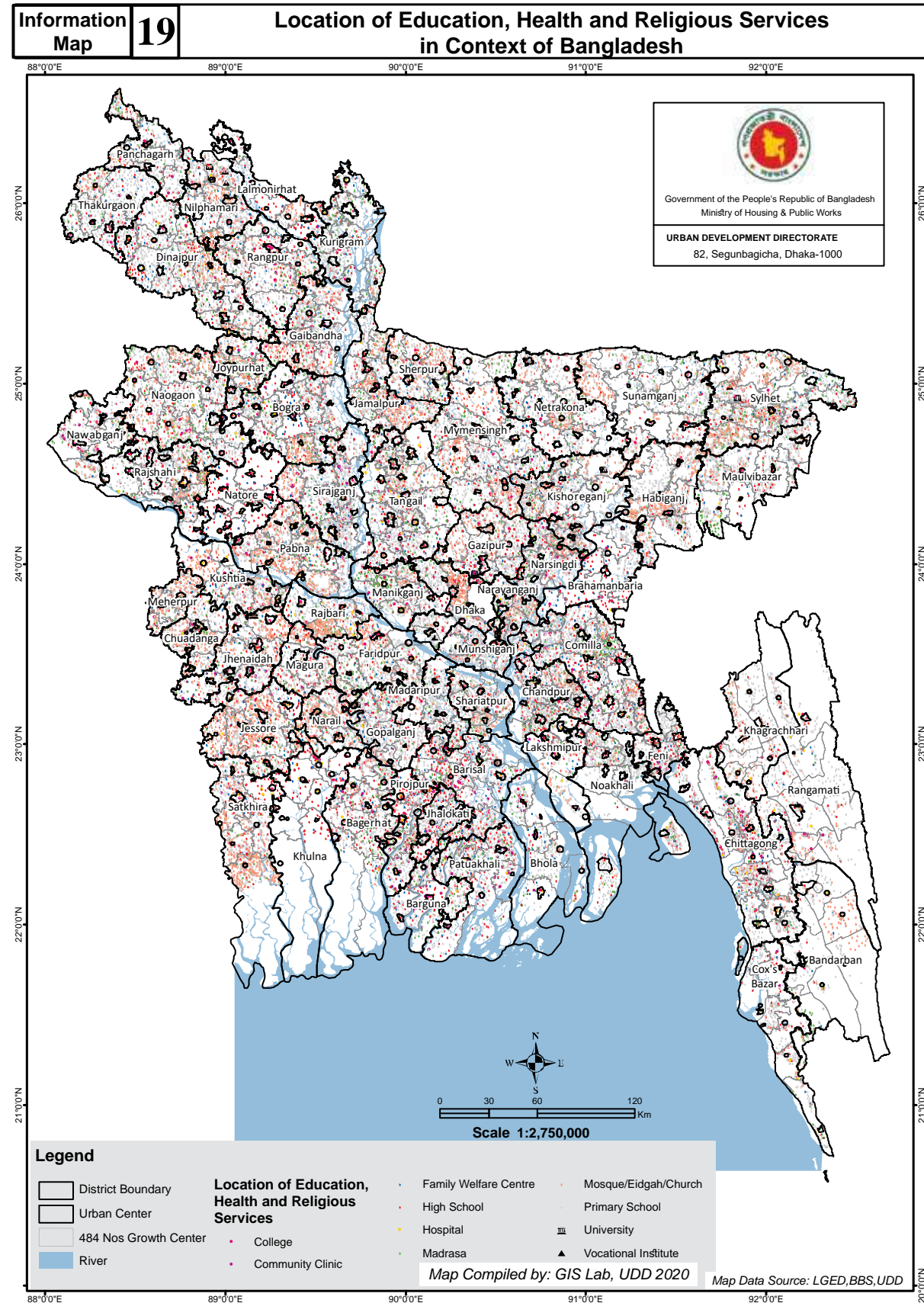
$$\begin{aligned}
 \text{Urban Suitability Index Score} &= \sum \text{Suitability score in each parametr} \\
 &\times \text{Weighted factor}
 \end{aligned}$$

Main objective in this chapter was to find the comparative suitability of growth centers considering existing infrastructure and services.



Swadhinata Stamba
Suhrawardy Udyan, Dhaka

Inf. and Services : Education, Health and Religious Services



Inf. and Services : Education, Health and Religious Services

Index Score and Summary Table of Growth Center Urban Suitability Considering Education, Health and Religious Service

Suitability Chart No. 19 (a): Growth Center Urban Suitability Statistics Considering Education, Health and Religious Service								
Suitability Index Score	Administrative Level	Growth Center	Urban Population 2011	(%)	Total Population 2011	(%)	Area (SqKm)	(%)
Score: 15.00 to 24.34	Capital	1	8747042	6.10	8747042	25.86	305.84	0.21
	City Corporation	13	10032813	7.00	6937252	20.51	2352.74	1.62
Score: 11.28 to 14.99	District_HQ	6	2289635	1.60	479609	1.42	2083.74	1.43
	Paurashava_HQ	16	6730760	4.70	1389552	4.11	5239.66	3.60
Score: 8.62 to 11.27	Upazila_HQ	9	2398502	1.67	119281	0.35	4144.57	2.85
	District_HQ	16	5449841	3.80	1445542	4.27	5637.12	3.87
Score: 5.96 to 8.61	Paurashava_HQ	54	17852203	12.46	2724244	8.06	16756.73	11.51
	Upazila_HQ	17	4430622	3.09	266213	0.79	4770.08	3.28
Score: 1.96 to 5.95	District_HQ	12	4529242	3.16	971121	2.87	3947.65	2.71
	Paurashava_HQ	96	25178128	17.57	3478673	10.29	25417.90	17.46
Score: 1.96 to 5.95	Upazila_HQ	39	9206975	6.42	453382	1.34	9733.16	6.69
	District_HQ	12	5010121	3.50	1550566	4.58	3630.09	2.49
Score: 1.96 to 5.95	Paurashava_HQ	67	17508226	12.22	2279118	6.74	19691.80	13.53
	Upazila_HQ	52	8374679	5.84	696191	2.06	14813.09	10.18
Score: 1.96 to 5.95	District_HQ	7	2826485	1.97	748261	2.21	2193.33	1.51
	Paurashava_HQ	30	6994532	4.88	1007322	2.98	12766.70	8.77
Total		484	143321734	100	33819224	100	145547.31	100

Data Compiled by GIS Lab UDD, 2020

Suitability Chart No. 19 (b): Name of Growth Center and Urban Suitability Considering Education, Health and Religious Service			
Suitability Index Score	Administrative Level	Growth Center	Name of Growth Center
Score: 15.00 to 24.34	Capital	1	Dhaka City (Tejgaon)
	City Corporation	13	Bandar, Barishal Sadar (Kotwali), Boalia, ChattogramCity (Kotwali), Cumilla Sadar (Kotwali), Cumilla Sadar Dakshin (Kotoali), Khan Jahan Ali, Khulna Sadar, Kotwali (Sylhet), Mymensingh Sadar, Narayanganj Sadar, Rangpur Sadar, South Surma
	District_HQ	6	Faridpur Sadar, Gopalganj Sadar, Jamalpur Sadar, Mujibnagar, Narail Sadar, Rajbari Sadar
	Paurashava_HQ	16	Abhaynagar, Baghmara, Bakerganj, Bauphal, Damurhuda, Faridganj, Gaffargaon, Gazipur Sadar, Golabganj, Habiganj Sadar, Nabiganj, Pakundia, Royganj, Shahrasti, Sreepur (Gazipur), Sujaganagar
Score: 11.28 to 14.99	Upazila_HQ	9	Balaganj, Balia Kandi, Bishwanath, Burichang, Dimla, Madhukhali, Manda, Shyamnagar, Sreepur (Magura)
	District_HQ	16	Bandarban Sadar, Baniachong, Chandpur Sadar, Chuadanga Sadar, Dumki, Feni Sadar, Gaibandha Sadar, Jhenaidaha Sadar, Kotwali (Jashore), Madaripur Sadar, Magura Sadar, Maulvi Bazar Sadar, Meherpur Sadar, Patuakhali Sadar, Rangamati Sadar, Tangail Sadar
	Paurashava_HQ	54	Ajmiriganj, Badarganj, Bagher Para, Beani Bazar, Chandanaish, Daudkandi, Dhamrai, Fulbari, Fulbaria, Galachipa, Gangni, Gobindaganj, Harinakunda, Homna, Jagannathpur, Jhikargachha, Kachua (Chandpur), Kalai, Kalaroa, Kalia, Kaliakair, Kaliganj (Jhenaidah), Kalihati, Kaptai, Kazipur, Kulaura, Madhabpur, Manohardi, Matlab, Mirsharai, Mohanganj, Morrelganj, Muksudpur, Muktagachha, Nangalkot, Narsingdi Sadar, Parbatipur, Patiya, Purbadhala, Rangunia, Raozan, Rugganj, Saidpur, Sakhipur, Sandwip, Savar, Shalikh, Sharsha, Sherpur, Shib Char, Sonatola, Sundarganj, Titash, Trishal
Score: 8.62 to 11.27	Upazila_HQ	17	Assasuni, Baliadangi, Belabo, Bhandaria, Chirirbandar, Fatikchhari, Hathazari, Kalmakanda, Kapasia, Lakhai, Mohammadpur, Palashbari, Pirgachha, Rajoir, Sadullapur, Sapahar, Sauria
	District_HQ	12	Bhola Sadar, Bishwambarpur, Joypurhat Sadar, Kishoreganj Sadar, Kurigram Sadar, Kushtia Sadar, Manikganj Sadar, Pabna Sadar, Palong, Panchagarh Sadar, Satkhira Sadar, Thakurgaon Sadar
	Paurashava_HQ	96	Akkelpur, Alamdanga, Anowara, Atgharia, Bajitpur, Bakshiganj, Banchharampur, Barlekha, Begumganj, Bera, Bhairab, Bhaluka, Bhanga, Bhangura, Bhedarganj, Bochaganj, Boda, Chandina, Chatkhil, Chauddagang, Chaugachha, Chhaganaiya, Chhatak, Chunarughat, Debidwar, Dhamoirhat, Dhanbari, Dharampasha, Dhunat, Dhupchanchia, Durgapur (Netrakona), Faridpur, Fulgazi, Gauripur, Gaurnadi, Ghoraghat, Goalandaghat, Godagari, Gopalpur, Gurudaspur, Hajiganj, Hossainpur, Jaldhaka, Juri, Kala Para, Kalkini, Karimganj, Katiadi, Kawkhali (Betunia), Keshabpur, Khetlal, Khoksa, Kotali Para, Laksam, Lohagara (Narail), Madarganj, Mahadebpur, Manirampur, Mathbaria, Meghna, Mehendiganj, Melandaha, MirpurMohanpur Monoharganj, Muladi, Munshiganj Sadar, Nagarkanda, Nakla, Nalitabari, Nandail Naria Natore Sadar Nesarabad (Swarupkati), Paba, Palash, Patnitala, Phultala, Rajasthali, Roypura, Santhia, Sarankhola, Sarishabari, Shahjampur, Shaikupa, Shibganj (Nawabganj), Shibpur, Sreebardi, Tanore, Tarash, Ulipur, Ullah Para, Uttar Matlab, Zakiganj, Zanjira, Zianagar
Score: 1.96 to 5.95	Upazila_HQ	39	Agailjhara, Araihsar, Atpara, Badalgachhi, Bahubal, Bamna, Basail, Boalkhali, Brahman Para, Companiganj (Sylhet), Daulatpur (Manikganj), Debiganj, Dhobaura, Fakirhat, Fenchuganj, Ghior, Gowainghat, Harirampur, Jhenagati, Jurai Chhari, Kaliganj (Satkhira), Kamarkhanda, Kashiani, Keraniganj, Kishoreganj, Mitha Pukur, Muradnagar, Nagarpur, Nasirnagar, Nawabganj (Dinajpur), Niamatpur, Pirganj (Rangpur), Rajapur, Saghatta, Serajdikhan, Shibalaya, South Sunamganj, Sreenagar, Tahirpur

Data Compiled by GIS Lab UDD, 2020

Suitability Chart No. 19 (b): Name of Growth Center and Urban Suitability Considering Education, Health and Religious Service			
Suitability Index Score	Administrative Level	Growth Center	Name of Growth Center
Score: 5.96 to 8.61	District_HQ	12	Bagerhat Sadar, BoguraSadar, Dinajpur Sadar, Jhalokati Sadar, Lakshmpur Sadar, Naogaon Sadar, Nawabganj Sadar, Netrokona Sadar, Pirojpur Sadar, Sherpur Sadar, Sirajganj Sadar, Sunamganj Sadar
	Paurashava_HQ	67	Adamdighi, Amtali, Ashuganj, Bagha, Banari Para, Banskhali, Barura, Belkuchi, Betagi, Bhuapur, Birampur, Birganj, Boalmari, Chakaria, Chatmohar, Damudya, Derai, Dewanganj, Domar, Durgapur (Rajshahi), Gabtali, Ghatal, Gomastapur, Haim Char, Hakimpur, Hatiya, Ishwardi, Ishwarganj, Islampur, Jiban Nagar, Kahaloo, Kanaighat, Kasba, Kaunia, Kotchandpur, Kular Char, Kumarkhali, Madan, Madhupur, Maheshkhali, Maheshpur, Matiranga, Mirzapur, Nabinagar, Nachole, Nageshwari, Nalchity, Nandigram, Panchbibi, Pangsha, Patharghata, Phulpur, Pirganj (Thakurgaon), Puthia, Ramgarh, Ranisankail, Roypur, Sariakandi, Senbagh, Shibganj (Bogura), Singair, Sonagazi, Sonaimuri, Sonargaon, Sreemangal, Sulla, Tungi Para
	Upazila_HQ	52	Alfadanga, Atrai, Atwari, Austagram, Babuganj, Barkal, Belai Chhari, Bhurungamari, Biral, Char Rajibpur, Chilmari, Chitalmari, Daulatpur (Kushtia), Debhata, Delduar, Dighalia, Dowarabazar, Fulchhari, Gosairhat, Haluaghat, Jaintiapur, Jamalganj, Kaharole, Kaliganj (Gazipur), Kawkhali, Khansama, Koyra, Kutubdia, Lohagara (Chattogram), Lohajang, Mahalchhari, Mirzaganj, Mollahat, Naikhongchhari, Nanner Char, Nawabganj (Dhaka), Nazirpur, Panchhari, Pekua, Phulbari, Porsha, Rajarhat, Rampal, Raumar, Ruma, Sadarpur, Taraganj, Tarail, Tentulia, Tongibari, Ukhia, Wazirpur
Score: 1.96 to 5.95	District_HQ	7	Barguna Sadar, Brahmanbaria Sadar, Cox'S Bazar Sadar, Lalmonirhat Sadar, Nilphamari Sadar, Noakhali Sadar (Sudharampur), Shajahanpur (Majhira)
	Paurashava_HQ	30	Akhaura, Bagati Para, Baghai Chhari, Baraigram, Bheramara, Burhanuddin, Char Fasson, Charghat, Companiganj (Noakhali), Dacope, Daganbhuiyan, Daulatkhana, Dohar, Kabirhat, Kamalganj, Kendua, Khagrachhari Sadar, Lalmoohan, Lalpur, Lama, Mongla, Paikgachha, Parshuram, Patgram, Ramganj, Ramgati, Satkania, Singra, Sitakunda, Teknaf
	Upazila_HQ	37	Aditmari, Alikadam, Barhatta, Batiaghata, Bholahat, Char Bhadrason, Chauhali, Dashmina, Dighinala, Dumuria, Gangachara, Gazaria, Haripur, Hatibandha, Hizla, Itna, Kachua (Bagerhat), Kaliganj (Lalmonirhat), Kanthalia, Khaliajuri, Lakshmicchhari, Langadu, Manikchhari, Manpura, Mithamain, Nikli, Rajnagar, Ramu, Raninagar, Rowangchhari, Rupsa, Sarail, Subarnachar, Tala, Tazumuddin, Terokhada, Thanchi

Inf. and Services : Education, Health and Religious Services

District wise Index Score of Each Growth Center Urban Suitability Considering Education, Health and Religious Service in Alphabetical Order

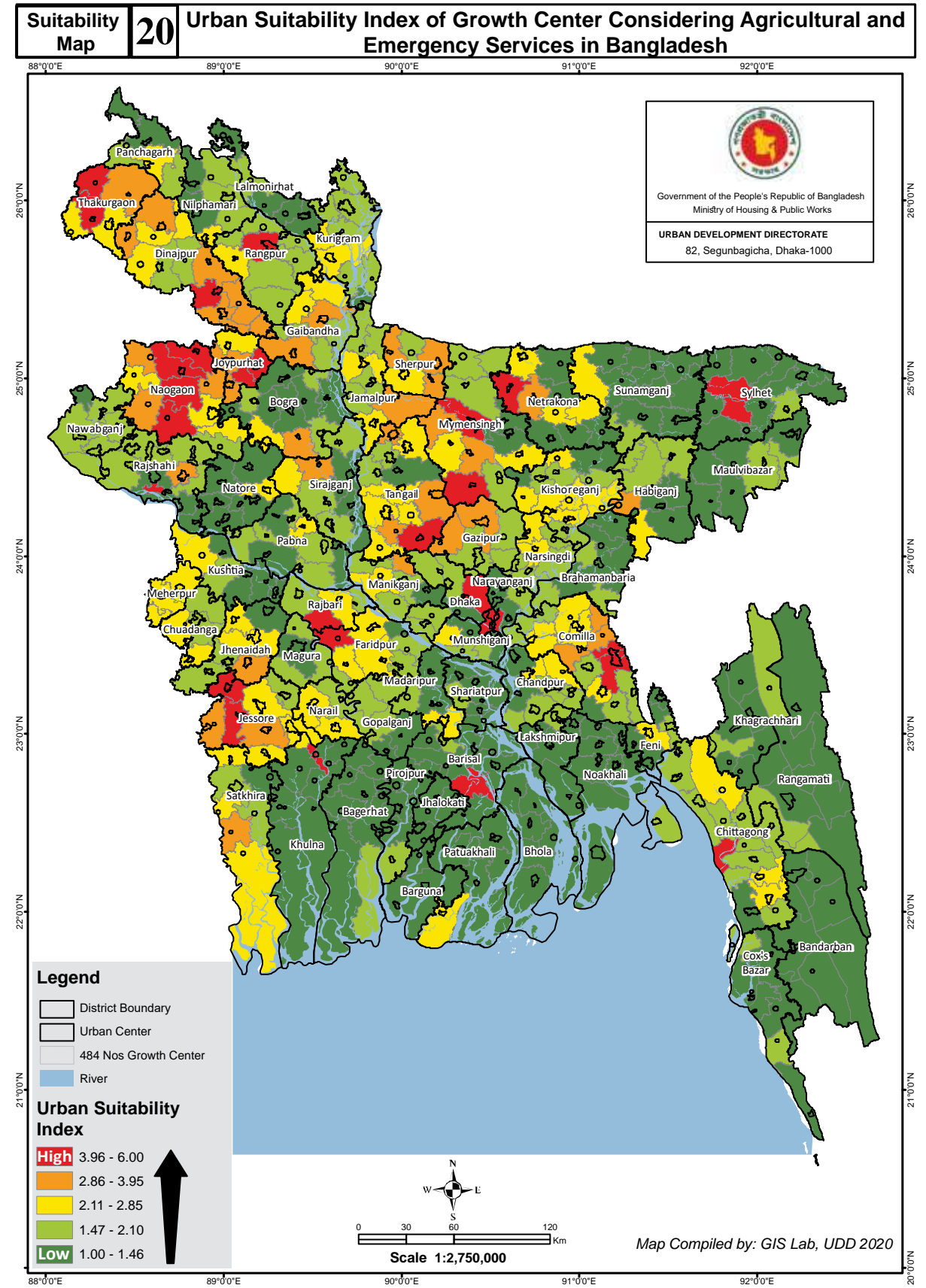
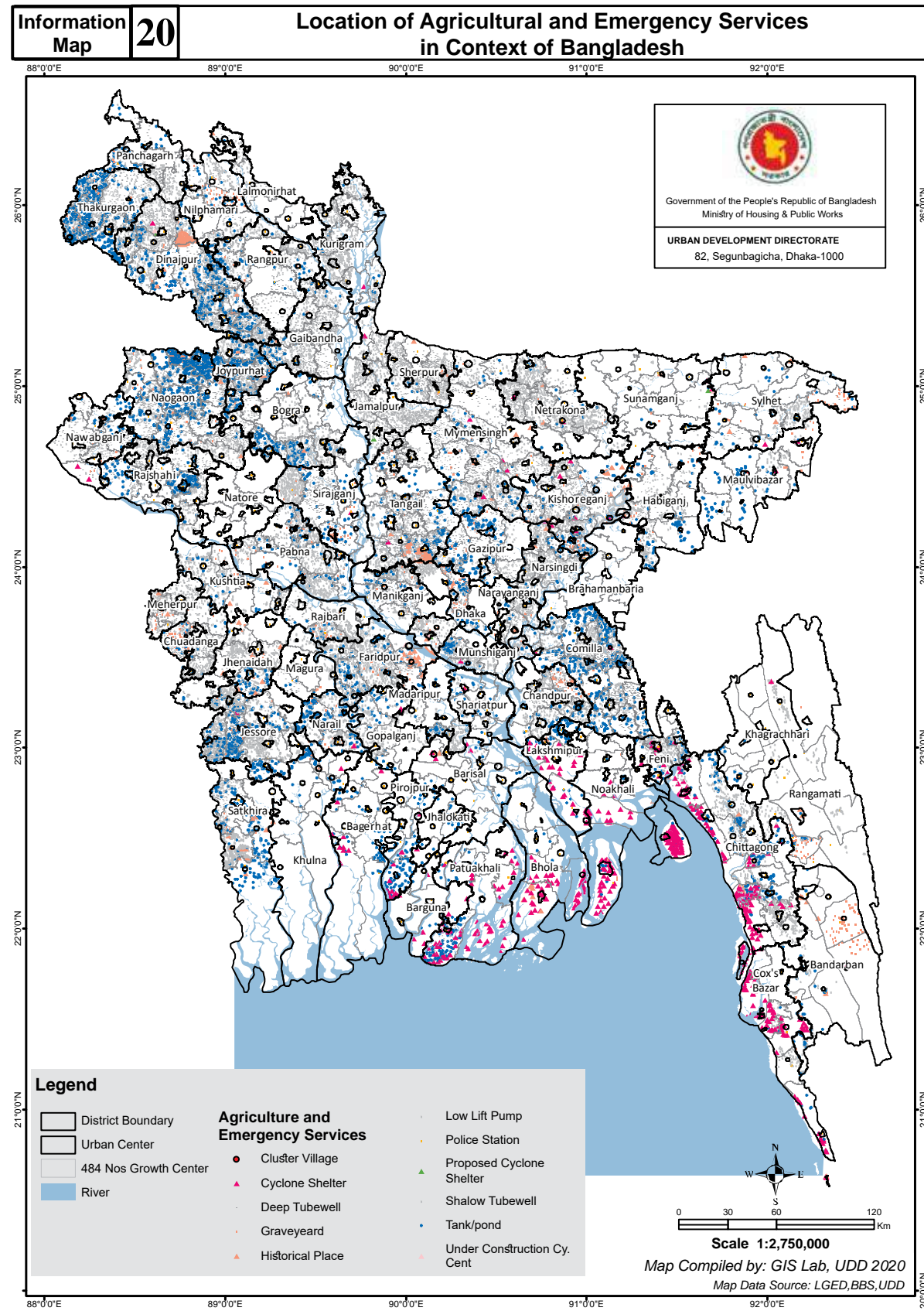
District	Growth Center	Suitability	District	Growth Center	Suitability	District	Growth Center	Suitability
Narsingdi	Belabo	12.33	Patuakhali	Bauphal	17.27	Sherpur	Jhenaigati	9.19
	Manohardi	12.33		Dashmina	5.10		Nakla	11.11
	Narsingdi Sadar	13.97		Dumki	13.74		Nalitabari	9.83
	Palash	9.09		Galachipa	11.74	Sherpur Sadar	8.29	
	Roytura	8.71		Kala Para	8.66	Sreebardi	11.11	
	Shibpur	10.90		Mirzaganj	7.28	Sirajganj	Belkuchi	7.28
Natore	Bagati Para	1.96		Patuakhali Sadar	13.40		Chauhali	5.68
	Baraigram	5.19		Bhandaria	12.86		Kamarkhanda	9.57
	Gurudaspur	10.58		Kawkhali	7.49		Kazipur	11.80
	Lalpur	4.18		Mathbaria	11.21		Royganj	16.32
	Natore Sadar	9.24	Nazirpur	6.43	Shahjampur		8.98	
	Singra	3.50	Nesarabad (Swarupkati)	10.31	Sirajganj Sadar		7.81	
Nawabganj	Bholahat	4.88	Pirojpur Sadar	6.85	Tarash		10.22	
	Gomastapur	7.86	Zianagar	11.11	Ullah Para		9.51	
	Nachole	8.24	Balia Kandi	15.28	Sunamganj		Bishwambarpur	8.77
	Nawabganj Sadar	7.28	Goalandaghat	9.67		Chhatak	9.88	
	Shibganj (Nawabganj)	10.68	Pangsha	7.97		Derai	8.50	
Netrakona	Atpara	10.68	Rajbari Sadar	16.75		Dharampasha	9.65	
	Barhatta	5.73	Rajshahi	Bagha		7.16	Dowarabazar	7.60
	Durgapur (Netrakona)	9.72		Baghmara		18.65	Jagannathpur	14.62
	Kalmakanda	12.70		Boalia		16.00	Jamalganj	7.12
	Kendua	4.14		Charghat		4.88	South Sunamganj	9.36
	Khaliajuri	5.89		Durgapur		7.65	Sulla	8.25
	Madan	7.86		Godagari		9.71	Sunamganj Sadar	8.45
	Mohanganj	11.96		Mohanpur	9.19	Tahirpur	10.74	
	Netrokona Sadar	8.29		Paba	10.46	Sylhet	Balaganj	15.90
	Purbadhala	11.80		Puthia	6.80		Beani Bazar	12.38
Nilphamari	Dimla	16.16		Tanore	11.10		Bishwanath	18.88
	Domar	6.27	Rangamati	Baghai Chhari	5.42		Companiganj (Sylhet)	9.51
	Jaldhaka	9.88		Barkal	6.48		Fenchuganj	11.00
	Kishoreganj	8.98		Belai Chhari	6.53		Golabganj	19.99
	Nilphamari Sadar	4.88		Jurai Chhari	8.98		Gowainghat	9.25
	Saidpur	13.40		Kaptai	13.02		Jaintiapur	7.01
Noakhali	Begumganj	9.41		Kawkhali (Betbunia)	11.18		Kanaighat	8.02
	Chatkhil	9.46		Langadu	5.58		Kotwali (Sylhet)	16.00
	Companiganj (Noakhali)	5.42		Nanner Char	7.12	South Surma	16.00	
	Hatiya	7.33		Rajasthali	10.33	Zakiganj	10.84	
	Kabirhat	4.35		Rangamati Sadar	11.48	Tangail	Basail	9.57
	Noakhali Sadar (Sudharampur)	4.56	Badarganj	13.29	Bhuapur		8.18	
	Senbagh	6.00	Gangachara	5.31	Delduar		8.61	
	Sonaimuri	7.49	Kaunia	7.05	Dhanbari		9.88	
	Subarnachar	5.65	Mitha Pukur	11.12	Ghatail		8.13	
	Pabna	Atgharia	11.00	Pirgachha	12.60		Gopalpur	9.83
Bera		9.14	Pirganj (Rangpur)	10.79	Kalihati		14.19	
Bhangura		10.20	Rangpur Sadar	16.00	Madhupur		6.32	
Chatmohar		7.70	Taraganj	8.50	Mirzapur		7.44	
Faridpur		11.27	Assasuni	11.59	Nagarpur		8.98	
Ishwardi		8.18	Debhata	7.54	Sakhipur	11.80		
Pabna Sadar		10.74	Kalaroa	12.76	Tangail Sadar	13.02		
Santhia		9.78	Kaliganj	8.87	Thakurgaon	Baliadangi	13.34	
Sujanagar		17.43	Satkhira Sadar	10.20		Hariapur	5.52	
Panchagarh	Atwari	7.81	Shyamnagar	18.88		Pirganj (Thakurgaon)	7.28	
	Boda	9.46	Tala	4.83		Ranisankail	8.02	
	Debiganj	9.25	Shariatpur	Bhedarganj		8.87	Thakurgaon Sadar	10.47
	Panchagarh Sadar	9.41		Damudya	7.70			
	Tentulia	7.22		Gosairhat	6.48			
		Naria		10.15				
		Palong		9.09				
		Zanjira	9.78					

Data Compiled by GIS Lab UDD, 2020

Education, Health and Religious Services

Based on available data, social services are calculated with 10 indicators. Those are: college, hospital, university, vocational institute, community clinic, family welfare center, high school, madrasa, mosque/eidgah/ church and primary school.

Ins. and Services : Agriculture and Emergency Services



Ins. and Services : Agriculture and Emergency Services

Index Score and Summary Table of Growth Center Urban Suitability Considering Agriculture and Emergency Services

Suitability Chart No. 20 (a): Growth Center Urban Suitability Statistics Considering Agriculture and Emergency Services								
Suitability Index Score	Administrative Level	Growth Center	Urban Population 2011	(%)	Total Population 2011	(%)	Area (SqKm)	(%)
Score: 3.96 to 6.00	Capital	1	8747042	6.10	8747042	25.86	305.84	0.21
	City Corporation	13	10032813	7.00	6937252	20.51	2352.74	1.62
	Paurashava_HQ	12	3038580	2.12	317831	0.94	3627.25	2.49
	Upazila_HQ	4	970485	0.68	51114	0.15	1162.91	0.80
Score: 2.86 to 3.95	District_HQ	5	2295410	1.60	498443	1.47	2078.33	1.43
	Paurashava_HQ	24	7068917	4.93	1075411	3.18	6947.91	4.77
	Upazila_HQ	10	2149810	1.50	107938	0.32	2355.79	1.62
Score: 2.11 to 2.85	District_HQ	11	4464605	3.12	1122151	3.32	3521.80	2.42
	Paurashava_HQ	47	12713050	8.87	1748101	5.17	12681.71	8.71
	Upazila_HQ	22	5085520	3.55	295594	0.87	7387.37	5.08
Score: 1.47 to 2.10	District_HQ	10	3712842	2.59	1002782	2.97	3219.13	2.21
	Paurashava_HQ	85	26294119	18.35	4232270	12.51	23146.56	15.90
	Upazila_HQ	47	10657972	7.44	728674	2.15	11847.39	8.14
Score: 1.00 to 1.46	District_HQ	27	9632467	6.72	2571723	7.60	8672.68	5.96
	Paurashava_HQ	95	25149183	17.55	3505296	10.36	33469.36	23.00
	Upazila_HQ	71	11308919	7.89	877602	2.59	22770.57	15.64
Total		484	143321734	100	33819224	100	145547.31	100

Data Compiled by GIS Lab UDD, 2020

Suitability Chart No. 20 (b): Name of Growth Center and Urban Suitability Considering Agriculture and Emergency Services			
Suitability Index Score	Administrative Level	Growth Center	Name of Growth Center
Score: 3.96 to 6.00	Capital	1	Dhaka City (Tejgaon)
	City Corporation	13	Bandar, Barishal Sadar (Kotwali), Boalia, ChattogramCity (Kotwali), Cumilla Sadar (Kotwali), Cumilla Sadar Dakshin (Kotoali), Khan Jahan Ali, Khulna Sadar, Kotwali (Sylhet), Mymensingh Sadar, Narayanganj Sadar, Rangpur Sadar, South Surma
	Paurashava_HQ	12	Bhaluka, Chaugachha, Dhamoirhat, Fulbari, Jhikargachha, Kalai, Khetlal, Mahadebpur, Mirzapur, Patnitala, Purbadhala, Ranisankail
	Upazila_HQ	4	Balia Kandi, Baliadangi, Madhukhali, Manda
Score: 2.86 to 3.95	District_HQ	5	Gaibandha Sadar, Jamalpur Sadar, Joypurhat Sadar, Netrokona Sadar, Thakurgaon Sadar
	Paurashava_HQ	24	Akkelpur, Birampur, Birganj, Bochaganj, Chandina, Dhanbari, Durgapur (Rajshahi), Ghoraghat, Gobindaganj, Hakimpur, Kaliakair, Kaliganj (Jhenaidah), Manirampur, Muktagachha, Nakla, Nalitabari, Parbatipur, Royganj, Sakhirpur, Sharsha, Sherpur, Sreebardi, Sreepur (Gazipur), Trishal
	Upazila_HQ	10	Badalgachhi, Brahman Para, Burichang, Delduar, Kaliganj (Satkhira), Lakhai, Nawabganj (Dinajpur), Niamatpur, Sapahar, Sauria
Score: 2.11 to 2.85	District_HQ	11	Faridpur Sadar, Feni Sadar, Jhenaidaha Sadar, Kotwali (Jashore), Meherpur Sadar, Mujibnagar, Naogaon Sadar, Narail Sadar, Rajbari Sadar, Sherpur Sadar, Tangail Sadar
	Paurashava_HQ	47	Abhaynagar, Badarganj, Bajitpur, Boalmari, Boda, Chandanaish, Damurhuda, Daudkandi, Debidwar, Dharampasha, Durgapur (Netrakona), Faridpur, Fulbaria, Gangni, Gurudaspur, Harinakunda, Islampur, Jiban Nagar, Kachua (Chandpur), Kala Para, Kalaroa, Kalia, Kalihati, Kalkini, Katiadi, Keshabpur, Laksam, Madhabpur, Madhupur, Manohardi, Matlab, Mohanganj, Nagarkanda, Nandail, Nandigram, Pakundia, Panchbibi, Phultala, Pirganj (Thakurgaon), Saidpur, Sarishabari, Satkania, Shibpur, Sundarganj, Tarash, Titash, Ulipur
	Upazila_HQ	22	Atpara, Austagram, Basail, Biral, Daulatpur (Kushtia), Debhata, Fatikchhari, Ghior, Haripur, Kaharole, Khansama, Muradnagar, Nagarpur, Nikli, Porsha, Rajarhat, Raninagar, Sadullapur, Shibabaya, Shyamnagar, Sreenagar, Tarail

Data Compiled by GIS Lab UDD, 2020

Suitability Chart No. 20 (b): Name of Growth Center and Urban Suitability Considering Agriculture and Emergency Services			
Suitability Index Score	Administrative Level	Growth Center	Name of Growth Center
Score: 1.47 to 2.10	District_HQ	10	Baniachong, Chuadanga Sadar, Dinajpur Sadar, Gopalganj Sadar, Kishoreganj Sadar, Kurigram Sadar, Manikganj Sadar, Nawabganj Sadar, Palong, Satkhira Sadar
	Paurashava_HQ	85	Ajmiriganj, Alamdanga, Anowara, Ashuganj, Atgharia, Bagher Para, Baghmara, Bakshiganj, Banchharampur, Barura, Beani Bazar, Bhairab, Bhanga, Bhangura, Bhuapur, Chaudhagram, Chhagalnaiya, Dewanganj, Dhamrai, Dhunat, Dhupchanchia, Dohar, Faridganj, Gaffargaon, Gauradi, Gazipur Sadar, Goalandaghat, Godagari, Gomastapur, Gopalpur, Haim Char, Hajiganj, Homna, Ishwardi, Jaldhaka, Juri, Kaptai, Karimganj, Kasba, Kaunia, Kawkhali (Betunia), Kazipur, Kotchandpur, Kulaura, Kuliar Char, Lohagara (Narail), Madarganj, Maheshpur, Mathbaria, Meghna, Melandaha, Mirpur, Mirsharai, Mohanpur, Muksudpur, Nabiganj, Nachole, Nageshwari, Nangalkot, Narsingdi Sadar, Palash, Pangsha, Patiya, Phulpur, Puthia, Rajasthali, Ramganj, Ramgarh, Rangunia, Raozan, Roypura, Sandwip, Santhia, Sarankhola, Savar, Shahjadpur, Shahrasti, Shalikh, Shibganj (Nawabganj), Sitakunda, Sonatola, Sujaganar, Sulla, Tanore, Ullah Para
	Upazila_HQ	47	Alfadanga, Araihaaz, Assasuni, Atrai, Atwari, Belabo, Bhurungamari, Boalkhali, Chilmari, Chirirbandar, Daulatpur (Manikganj), Debiganj, Dhobaura, Dighinala, Dimla, Fulchhari, Gangachara, Gazaria, Haluaghat, Harirampur, Hathazari, Hatibandha, Jhenaigati, Kaliganj (Gazipur), Kapasia, Kashiani, Kishoreganj, Kutubdia, Lohagara (Chattogram), Lohajang, Mitha Pukur, Mithamain, Mohammadpur, Nawabganj (Dhaka), Palashbari, Pekua, Phulbari, Pirgachha, Pirganj (Rangpur), Rajoir, Raumari, Sadarpur, Saghatta, Sreepur (Magura), Taraganj, Tongibari, Ukhia
Score: 1.00 to 1.46	District_HQ	27	Bagerhat Sadar, Bandarban Sadar, Barguna Sadar, Bhola Sadar, Bishwambarpur, BoguraSadar, Brahmanbaria Sadar, Chandpur Sadar, Cox'S Bazar Sadar, Dumki, Jhalokati Sadar, Kushtia Sadar, Lakshimpur Sadar, Lalmonirhat Sadar, Madaripur Sadar, Magura Sadar, Maulvi Bazar Sadar, Nilphamari Sadar, Noakhali Sadar (Sudhampur), Pabna Sadar, Panchagarh Sadar, Patuakhali Sadar, Pirojpur Sadar, Rangamati Sadar, Shajahanpur (Majhira), Sirajganj Sadar, Sunamganj Sadar
	Paurashava_HQ	95	Adamdighi, Akhaura, Amtali, Bagati Para, Bagha, Baghai Chhari, Bakerganj, Banari Para, Banskhal, Baraigram, Barlekha, Bauphal, Begumganj, Belkuchi, Bera, Betagi, Bhedarganj, Bheramara, Burhanuddin, Chakaria, Char Fasson, Charghat, Chatkhil, Chatmohar, Chhatak, Chunarughat, Companiganj (Noakhali), Dacope, Daganbhuiyan, Damudya, Daulatkhani, Derai, Domar, Fulgazi, Gabtali, Galachipa, Gauripur, Ghatail, Golabganj, Habiganj Sadar, Hatiya, Hossainpur, Ishwarganj, Jagannathpur, Kabirhat, Kahaloo, Kamalganj, Kanaighat, Kendua, Khagrachhari Sadar, Khoksa, Kotali Para, Kumarkhali, Lalmoan, Lalpur, Lama, Madan, Maheshkhali, Matiranga, Mehendiganj, Mongla, Monoharganj, Morrelganj, Muladi, Munshiganj Sadar, Nabinagar, Nalchity, Naria, Natore Sadar, Nesarabad (Swarupkati), Paba, Paikgachha, Parshuram, Patgram, Patharghata, Ramgati, Roypur, Ruppaganj, Sariakandi, Senbagh, Shaikupa, Shib Char, Shibganj (Bogura), Singair, Singra, Sonagazi, Sonaimuri, Sonargaon, Sreemangal, Teknaf, Tungi Para, Uttar Matlab, Zakiganj, Zanjira, Zianagar
	Upazila_HQ	71	Aditmari, Agailjhara, Alikadam, Babuganj, Bahubal, Balaganj, Bamna, Barhatta, Barkal, Batiaghata, Belai Chhari, Bhandaria, Bholahat, Bishwanath, Char Bhadransar, Char Rajibpur, Chauhali, Chitalmari, Companiganj (Sylhet), Dashmina, Dighalia, Dowarabazar, Dumuria, Fakirhat, Fenchuganj, Gosairhat, Gowainghat, Hizla, Itna, Jaintiapur, Jamalganj, Jurai Chhari, Kachua (Bagerhat), Kaliganj (Lalmonirhat), Kalmakanda, Kamarkhanda, Kanthalia, Kawkhali, Keraniganj, Khaliajuri, Koyra, Lakshnichhari, Langadu, Mahalchhari, Manikchhari, Manpura, Mirzaganj, Mollahat, Naikhongchhari, Nanner Char, Nasirnagar, Nazirpur, Panchhari, Rajapur, Rajnagar, Rampal, Ramu, Rowangchhari, Ruma, Rupsa, Sarail, Serajdikhan, South Sunamganj, Subarnachar, Tahirpur, Tala, Tazumuddin, Tentulia, Terokhada, Thanchi, Wazirpur

District Wise Index Score of Each Growth Center Urban Suitability Considering Agriculture and Emergency Services in Alphabetical Order

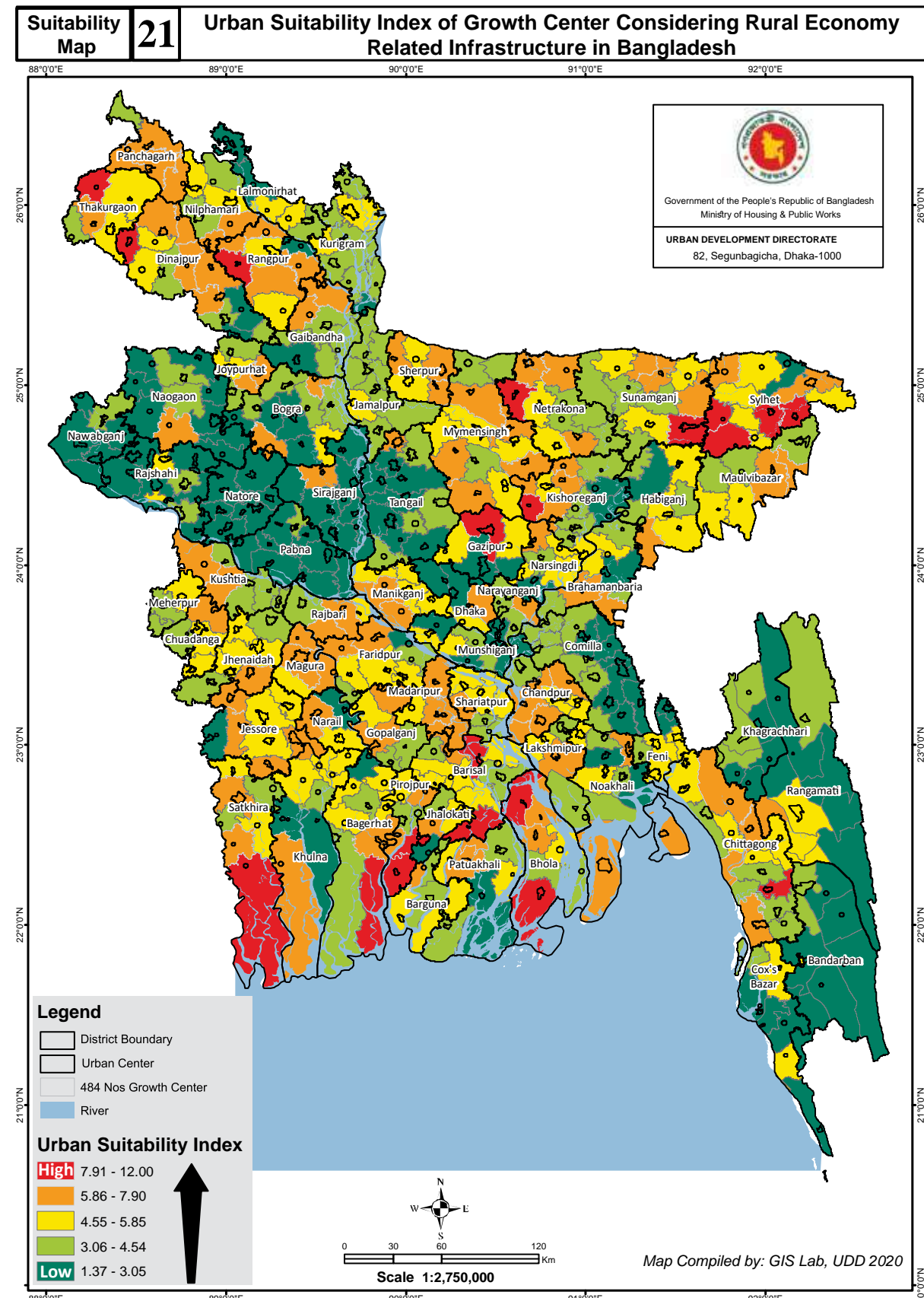
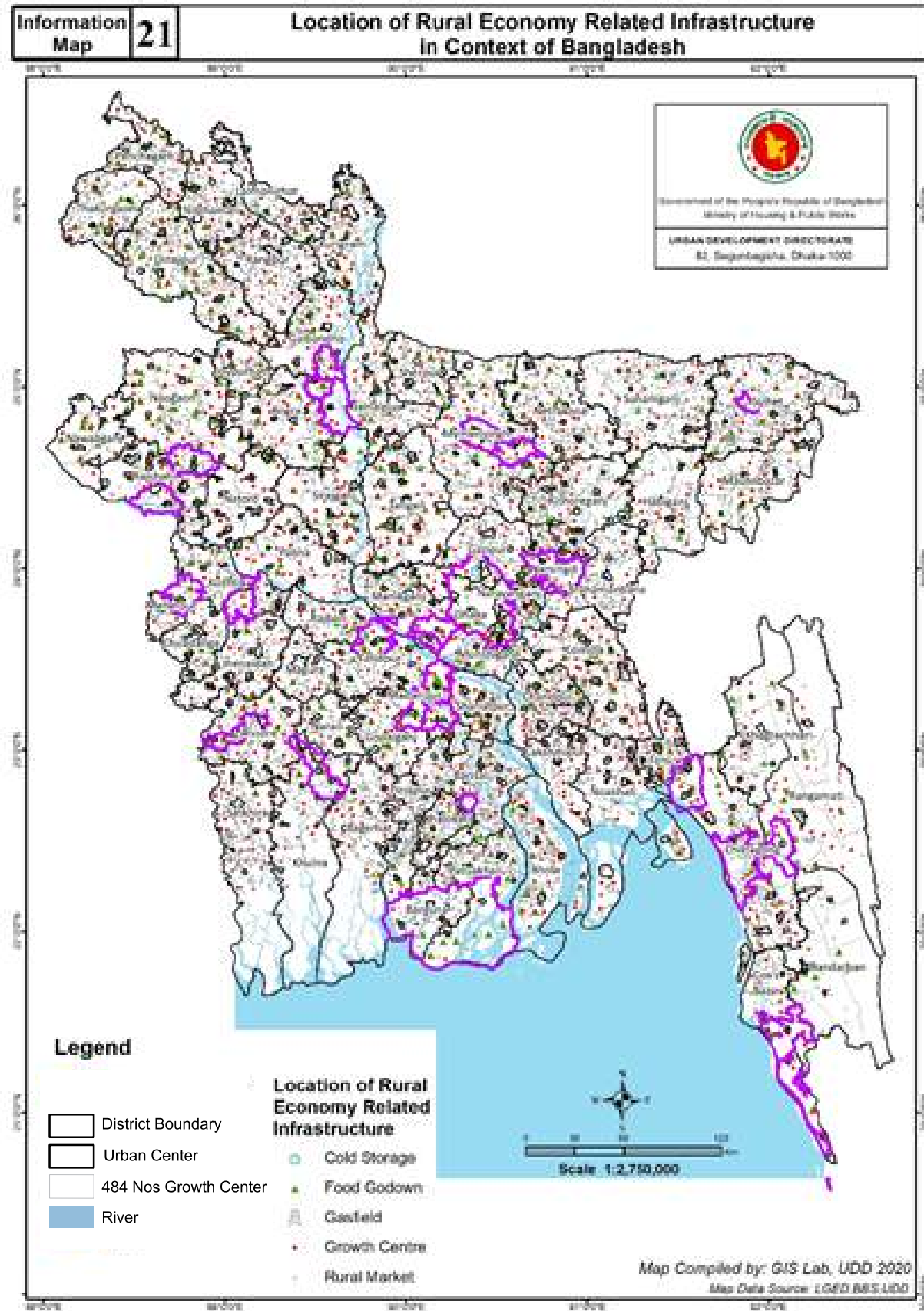
District	Growth Center	Suitability	District	Growth Center	Suitability	District	Growth Center	Suitability	
Natore	Bagati Para	1.01	Pirojpur	Bhandaria	1.16	Sirajganj	Belkuchi	1.19	
	Baraigram	1.00		Kawkhali	1.02		Chauhali	1.17	
	Gurudaspur	2.74		Mathbaria	1.66		Kamarkhanda	1.14	
	Lalpur	1.00		Nazirpur	1.01		Kazipur	1.62	
	Natore Sadar	1.13		Nesarabad (Swarupkati)	1.11		Royganj	3.49	
	Singra	1.14		Pirojpur Sadar	1.03		Shahjampur	1.51	
Nawabganj	Bholahat	1.29	Rajbari	Zianagar	1.28	Sirajganj Sadar	1.05		
	Gomastapur	1.88		Balia Kandi	4.39	Tarash	2.74		
	Nachole	1.82		Goalandaghat	1.71	Ullah Para	1.68		
	Nawabganj Sadar	1.83		Pangsha	1.81	Sunamganj	Bishwambarpur	1.14	
	Shibganj (Nawabganj)	1.81	Rajbari Sadar	2.73	Chhatak		1.16		
Netrakona	Atpara	2.44	Rajshahi	Bagha	1.10		Derai	1.05	
	Barhatta	1.43		Baghmara	1.66		Dharampasha	2.42	
	Durgapur (Netrakona)	2.77		Boalia	4.80		Dowarabazar	1.07	
	Kalmakanda	1.35		Charghat	1.32		Jagannathpur	1.14	
	Kendua	1.18		Durgapur (Rajshahi)	2.95		Jamalganj	1.08	
	Khaliajuri	1.41		Godagari	2.10		South Sunamganj	1.08	
	Madan	1.44		Mohanpur	1.88		Sulla	1.52	
	Mohanganj	2.42		Paba	1.20		Sunamganj Sadar	1.14	
	Netrokona Sadar	2.90		Puthia	1.53	Tahirpur	1.01		
	Purbadhala	4.24		Tanore	1.88	Sylhet	Balaganj	1.31	
Nilphamari	Dimla	2.03	Rangamati	Baghai Chhari	1.16		Beani Bazar	2.10	
	Domar	1.33		Barkal	1.29		Bishwanath	1.26	
	Jaldhaka	1.76		Belai Chhari	1.43		Companiganj (Sylhet)	1.02	
	Kishoreganj	1.52		Jurai Chhari	1.29		Fenchuganj	1.22	
	Nilphamari Sadar	1.22		Kaptai	1.82		Golabganj	1.27	
	Saidpur	2.85		Kawkhali (Betbunia)	1.62		Gowainghat	1.13	
Noakhali	Begumganj	1.02		Langadu	1.28		Jaintiapur	1.07	
	Chatkhil	1.40		Nanner Char	1.28		Kanaighat	1.11	
	Companiganj (Noakhali)	1.01		Rajasthali	1.82		Kotwali (Sylhet)	4.80	
	Hatiya	1.37		Rangamati Sadar	1.28	South Surma	4.80		
	Kabirhat	1.08	Rangpur	Badarganj	2.35	Zakiganj	1.34		
	Noakhali Sadar (Sudharampur)	1.04		Gangachara	1.53	Tangail	Basail	2.36	
	Senbagh	1.11		Kaunia	1.55		Bhuapur	1.55	
	Sonaimuri	1.36		Mitha Pukur	1.93		Delduar	3.15	
Subarnachar	1.14	Pirgachha		1.93	Dhanbari		2.95		
Pabna	Atgharia	1.81		Pirganj (Rangpur)	1.90		Ghatail	1.07	
	Bera	1.46		Rangpur Sadar	4.80		Gopalpur	2.09	
	Bhangura	2.00		Taraganj	2.06		Kalihati	2.57	
	Chatmohar	1.21	Satkhira	Assasuni	1.59		Madhupur	2.17	
	Faridpur	2.43		Debhata	2.30		Mirzapur	4.29	
	Ishwardi	1.77		Kalaroa	2.76		Nagarpur	2.26	
	Pabna Sadar	1.14		Kaliganj (Satkhira)	3.91	Sakhipur	2.91		
	Santhia	2.09		Satkhira Sadar	1.94	Tangail Sadar	2.33		
Sujanagar	1.53	Shyamnagar		2.26	Thakurgaon	Baliadangi	4.71		
Panchagarh	Atwari	1.82		Tala		1.01	Haripur	2.81	
	Boda	2.69		Shariatpur		Bhedarganj	1.14	Pirganj (Thakurgaon)	2.77
	Debiganj	2.08	Damudya			1.16	Ranisankail	4.70	
	Panchagarh Sadar	1.21	Gosairhat			1.05	Thakurgaon Sadar	3.48	
	Tentulia	1.12	Naria		1.26	Sherpur	Jhenaigati	2.04	
Patuakhali	Bauphal	1.05	Palong		1.59		Nakla	3.91	
	Dashmina	1.05	Zanjira	1.33	Nalitabari		3.45		
	Dumki	1.07	Sherpur Sadar	Sherpur Sadar	2.57		Sreebardi	3.07	
	Galachipa	1.13		Sirajganj	Jhenaigati		2.04	Sherpur Sadar	Sherpur Sadar
	Kala Para	2.76			Nakla	3.91	Sreebardi		3.07
	Mirzaganj	1.09			Nalitabari	3.45	Sherpur Sadar		Sherpur Sadar
Patuakhali Sadar	1.07	Sherpur Sadar			2.57	Sreebardi			3.07
		Sreebardi	3.07						

Data Compiled by GIS Lab UDD, 2020

Agriculture and Emergency Services

Based on available data agriculture and emergency services are calculated on 11 indicators. They are: historical place, deep tube well, graveyard, low lift pump, police station, shallow tube well, tank/pond, cluster village, cyclone shelter, proposed cyclone shelter and under construction cyclone center.

Ins. and Services : Rural Economy related Infrastructure



Ins. and Services : Rural Economy related Infrastructure

Index Score and Summary Table of Growth Center Urban Suitability Considering Rural Economy Related Infrastructure related Service

Suitability Chart No. 21 (a): Growth Center Urban Suitability Statistics Considering Rural Economy Related Infrastructure related Service								
Suitability Index Score	Administrative Level	Growth Center	Urban Population 2011	(%)	Total Population 2011	(%)	Area (SqKm)	(%)
Score: 7.91 - 12.00	Capital	1	8747042	25.86	8747042	6.10	305.8375	0.21
	City Corporation	13	6937252	20.51	10032813	7.00	2352.739	1.62
	District_HQ	1	87243	0.26	430520	0.30	453.244	0.31
	Paurashava_HQ	13	496790	1.47	3771651	2.63	4530.313	3.11
Score: 5.86 - 7.90	Upazila_HQ	6	113701	0.34	1333346	0.93	3870.41	2.66
	District_HQ	13	1053558	3.12	4832475	3.37	4533.555	3.11
	Paurashava_HQ	55	2055444	6.08	16183702	11.29	16918.66	11.62
Score: 4.55 - 5.85	Upazila_HQ	36	436544	1.29	7716578	5.38	10213.22	7.02
	District_HQ	13	1399006	4.14	5369036	3.75	4602.622	3.16
	Paurashava_HQ	52	2008731	5.94	14316197	9.99	14836.14	10.19
Score: 3.06 - 4.54	Upazila_HQ	42	590687	1.75	8841489	6.17	9938.545	6.83
	District_HQ	14	1034791	3.06	4557371	3.18	4463.929	3.07
	Paurashava_HQ	63	2345018	6.93	16194746	11.30	19861.92	13.65
Score: 1.37 - 3.05	Upazila_HQ	51	724334	2.14	10034642	7.00	12190.46	8.38
	City Corporation	1	689411	2.04	1820374	1.27	458.1203	0.31
	District_HQ	12	2111886	6.24	5784046	4.04	3636.078	2.50
Score: 1.37 - 3.05	Paurashava_HQ	55	2432853	7.19	17323158	12.09	17772.17	12.21
	Upazilla_HQ	43	554933	1.64	6032548	4.21	14609.34	10.04
Total		484	33819224	100	143321734	100	145547.3	100

Data Compiled by GIS Lab UDD, 2020

Suitability Chart No. 21 (b): Name of Growth Center and Urban Suitability Considering Rural Economy Related Infrastructure related Service			
Suitability Index Score	Administrative Level	Growth Center	Name of Growth Center
Score: 7.91 - 12.00	Capital	1	Dhaka City (DNCC & DSCC)
	City Corporation	13	Bandar (NCC) & Tarabo, Barisal Sadar (BCC), Chattogram City (CCC), Cumilla Sadar (Cumilla CC), Khan Jahan Ali (KCC), Khulna Sadar (KCC), Mymensingh Sadar (MCC), Narayanganj Sadar (NCC) & Shiddhirganj, Rajshahi Sadar (RCC), Rangpur Sadar (Rangpur CC), South Cumilla (Cumilla CC), South Surma (Sylhet CC), Sylhet Sadar (Sylhet CC)
	District_HQ	1	Bhola Sadar
	Paurashava_HQ	13	Badarganj, Bakerganj, Beanibazar, Bochaganj (Setabganj), Chandanaish, Char Fasson, Golabganj, Jagannathpur, Mathbaria, Muladi, Pakundia, Purbadhala, Sreepur Gazipur
	Upazila_HQ	6	Balaganj, Baliadangi, Bhandaria, Bishwanath, Sarankhola, Shyamnagar
Score: 5.86 - 7.90	District_HQ	13	Chandpur Sadar, Faridpur Sadar, Gopalganj Sadar, Lakshmipur Sadar, Madaripur Sadar, Magura Sadar, Narail Sadar, Panchagarh Sadar, Patuakhali Sadar, Rajbari Sadar, Satkhira Sadar, Shariatpur Sadar, Sunamganj Sadar
	Paurashava_HQ	55	Abhaynagar, Alamdanga, Banskhali, Bhaluka, Birganj, Boda, Burhanuddin, Chaugachha, Chhatak, Daulat Khan, Dhanbari, Durgapur Netrakona, Faridganj, Fulbari, Fulbaria, Gauripur, Gaurnadi, Hatiya, Hossainpur, Jhikargachha, Kachua Chandpur, Kalai, Kaliganj Jhenaidah, Kalkini, Kanaighat, Karimganj, Kasba, Katiadi, Keshabpur, Kultura, Madan, Madhabpur, Manohardi, Matlab Dakshin, Mirpur Kushtia, Morrelganj Bagerhat, Muksudpur, Nabinagar, Nakla, Nalitabari, Nandail, nandigram, Nesarabad Swarupkati, Parbatipur, Phulpur, Ranisankail, Roazan, Royganj, Saidpur, Sandwip, Senbagh, Shib Char, Sonatola, Sreebardi, Sundarganj
	Upazila_HQ	36	Araihazar, Atwari, Balia Kandi, Bamna, Bishwambarpur, Chirirbandar, Companiganj Sylhet, Daulatpurm, Kushtia, Debiganj, Dumki, Fatikchhari, Gangachara, Ghior, Haimchar, Harirampur, Juri, Kaliganj Satkhira, Kalmakanda, Kawkhali Rangamati, Khansama, Khetlal, Kishoreganj, Koyra, Madhukhali, Manda, Mitha Pukur, Mohammadpur, Morrelganj (Zianagar) Pirojpur, Phultala, Pargachha, Rajapur, Sadullapur, Shibbalaya, Sreepur Magura, Taraganj, Tarail

Data Compiled by GIS Lab UDD, 2020

Suitability Chart No. 21 (b): Name of Growth Center and Urban Suitability Considering Rural Economy Related Infrastructure related Service			
Suitability Index Score	Administrative Level	Growth Center	Name of Growth Center
Score: 4.55 - 5.85	District_HQ	13	Chuadanga Sadar, Feni Sadar, Habiganj Sadar & Shayestaganj, Jashore Sadar, Jhenaidaha Sadar, Joypurhat Sadar, Kishoreganj Sadar, Manikganj Sadar, Netrokona Sadar, Noakhali Sadar, Rangamati Sadar, Sherpur Sadar, Thakurgaon Sadar
	Paurashava_HQ	52	Amtali, Bagherpara, Banaripara, Bhairab, Bhanga, Bhedarganj, Boalmari, Chakaria, Chatkhil, Chhagalnaiya, Chunarughat, Derai, dhunat, Dohar, Domar, Gaffargaon, Gangni, Ghorashal (Palash), Goalandaghat, Harinakunda, Haziganj, Ishwarganj, Jaldhaka, Jibannagar, Kalaroa, Kalia, Kaliakair, Kamalganj, Kendua, Kesharhat (Mohanpur), Kotchandpur, Madarganj, Manirampur, Mirsharai (Baraiarhat), Muktagachha, Nabiganj, Nagarkanda, Nageshwari, Nalchity, Naria, Patharghata, Pirganj hakurgaon, Raipur, Rangunia, Raypura, Shahraati, Shalikhia, Singair, Sonagazi, Sreemangal, Zakiganj, Zanjira
	Upazila_HQ	42	Aditmari, Ashuganj, Assasuni, Babuganj, Belabo, Biral, Boalkhali, Chitalmari, Dashmina, Daulatpur Manikganj, Dighalia, Dowarabazar, Dumuria, Fakirhat, Fenchuganj, Gowainghat, Hathazari, Hizla, Jhenaigati, Kachua Bagerhat, Kaharole, Kaliganj Lalmonirhat, Kapasia, Kaptai, Kashiani, Keraniganj, Mirzaganj, Nazirpur, Pirganj Rangpur, Rajarhat, Rajasthali, Rajoir, Rampal, Rupsa, Sarail, Sauria, Sreenagar, Tahirpur, Tazumuddin, Terokhada, Ukhia, Wazirpur
Score: 3.06 - 4.54	District_HQ	14	Bagerhat Sadar, Bandarban Sadar, Barguna Sadar, Dinajpur Sadar, Gaibandha Sadar, Jamalpur Sadar, Jhalokati Sadar, Kurigram Sadar, Kushtia Sadar, Lalmonirhat Sadar, Maulvi Bazar Sadar, Meherpur Sadar, Nilphamari Sadar, Pirojpur Sadar
	Paurashava_HQ	63	Ajmiriganj, Akhaura, Akkelpur, Baghai Chhari, Bajitpur, Barlekha, Barura, Bauphal, Betagi, Bhangura, Bheramara, Birampur, Chandina, Chorghat, Daganbhuiyan, Damudya, Darshana (Damurhuda), Daudkandi, Dewanganj, dhupchanchia, Durgapur Rajshahi, gabtali, Ghoraghat, Homna, Islampur, Kabirhat, Kalapara & Kuakata, Khoksa, Kotalipara, Kuliari Char, Kumarkhali, Lalmohan, Madhupur, Mahadebpur, Maheshpur, Matiranga, Matlab Uttar (Sengarchar), Mehendiganj, Melandaha, Mohanganj, Mongla, Nazipur (Patnitala), Panchbibi, Pangsha, Patiya, Rahanpur (Gomastapur), Ramganj, Ramgarh
	Upazila_HQ	51	, Ramgati, Rupganj & Kanchan, Sakhipur, sariakandi, Sarishabari, Satkania, Shaikupa, Shibganj Bogra, Shibpur, Sitakunda, Sonaimuri, Sonargaon, Trishal, Tungipara, Ulipur
Score: 1.37 - 3.05	Upazila_HQ	51	Agailjhara, Alfadanga, Anowara, Atpara, Bahubal, Bakshiganj, Banchharampur, Barhatta, Basail, Batiaghata, Bhurungamari, Chilmar, Debhata, Dharampasha, Dhobaura, Dimla, Fulchhari, Gosairhat, Haluaghat, Haripur, Itna, Jamalganj, Kawkhali Pirojpur, Khaliajuri, Kutubdia, Lakhai, Lohagara Chittagong, Manpara, Meghna, Monoharganj, Mujibnagar, Muradnagar, Nagarpur, Nasirnagar, Nikli, Palashbari, Panchhari, Pekua, Phulbari, Rajnagar, Raumari, Sadarpur, Saghatta, Serajdikhan, South Sunamganj, Subarnachar, Sulla, Tala, Tentulia, Titash, Tongibari
	City Corporation	1	Gazipur Sadar (GCC & Tongi)
	District_HQ	12	Bogura Sadar, Brahmanbaria Sadar, Cox's Bazar Sadar, Khagrachhari Sadar, Munshiganj Sadar & Mirkadim, Naogaon Sadar, Narsingdi Sadar & Madhabdi, Natore Sadar & Naldanga, Nawabganj Sadar, Pabna Sadar, Sirajganj Sadar, Tangail Sadar
Score: 1.37 - 3.05	Paurashava_HQ	55	Adamdighi, Atgharia, Bagati Para, Bagha & Arani, Baraigram & Banpara, Begumganj (Chowmuhan), Belkuchi, Benapole (Sharsha), Bera, Bhabaniganj (Baghmara) & Tahirpur, Bhuaipur, Chalna (Dacope), Chatmohar, Chaudagram, Companiganj (Bashurhat) Noakhali, Debidwar, Dhamoirhat, Dhamrai, Faridpur, Galachipa, Ghatai, Gobindaganj, Godagari & Kakanhat, Gopalpur, Gopalpur (Lalpur), Gurudaspur, Hakimpur, Haragacha (Kaunia), Ishwardi, kahaloo, Kaliganj Gazipur, Kalihati, Kazipur, Laksam, Lama, Lohagara Narail, Maheshkhali, Mirzapur, Nachole, Nangalkot, Paikgachha, Parshuram, Patgram, Poba & Katakali & Noahata, Puthia, Santhia, Savar, Shahjadpur, sherpur, Shibganj Nawabganj, Singra, Sujanagar, Tanore & mundumala, Teknaf, Ullah Para
	Upazilla_HQ	43	Alikadam, Atrai, Austagram, Badalgachhi, Baniachong, Barkal, Belai Chhari, Bholahat, Brahman Para, Burichang, Char Bhadransar, Char Rajibpur, Chauhali, Delduar, Dighinala, Fulgazi, Gazaria, Hatibandha, Jaintiapur, Jurai Chhari, Kamarkhanda, Kanthalia, Lakshmichhari, Langadu, Lohajang, Mahalchhari, Manikchhari, Mithamain, Mollahat, Naikhongchhari, Naniarchar, Nawabganj Dhaka, Nawabganj Dinajpur, Niamatpur, Porsha, Ramu, Raninagar, Rowangchhari, Ruma, Sapahar, Shajahanpur (Majhira) Bogra, Tarash, Thanchi

District wise Index Score of Each Growth Center Urban Suitability Considering Rural Economy Related Infrastructure and related Service in Alphabetical Order

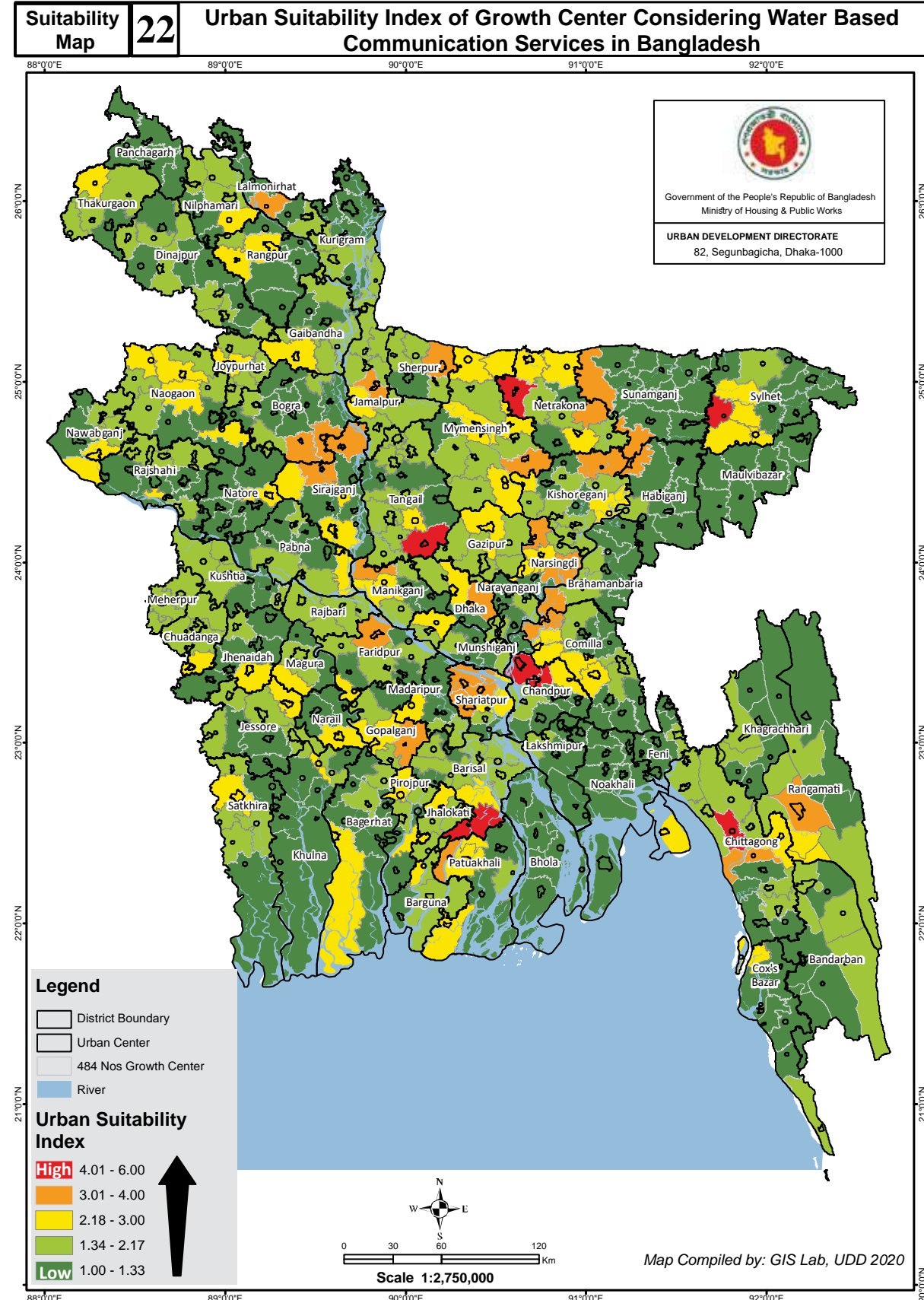
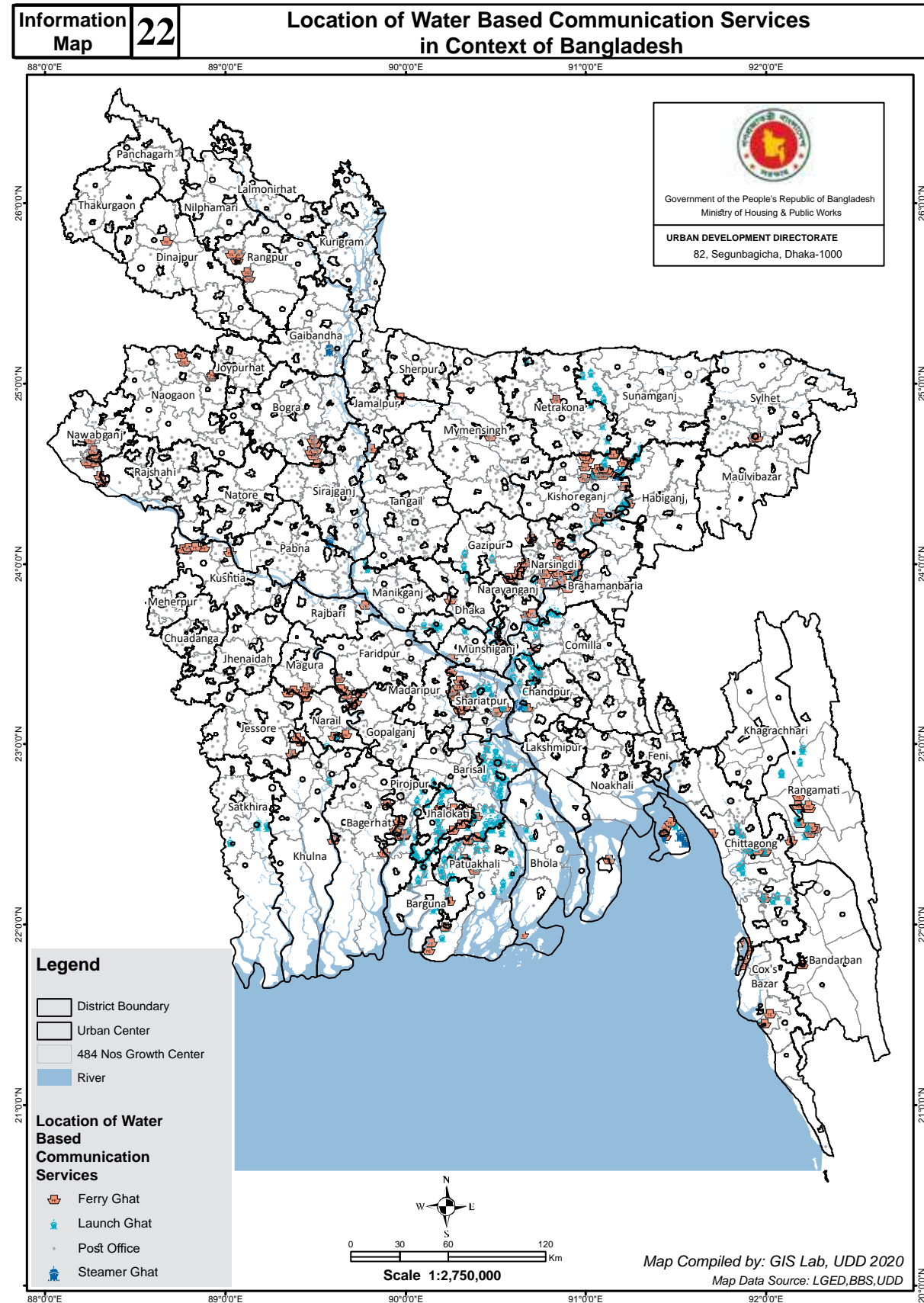
District	Growth Center	Suitability	District	Growth Center	Suitability	District	Growth Center	Suitability
Narsingdi	Belabo	5.66	Patuakhali	Bauphal	3.98	Sherpur	Jhenaigati	4.73
	Manohardi	6.78		Dashmina	5.47		Nakla	6.03
	Narsingdi Sadar	3.05		Dumki	7.52	Nalitabari	6.22	
	Palash	4.73		Galachipa	2.30	Sherpur Sadar	5.47	
	Roypura	5.01		Kala Para	4.36	Sreebardi	6.22	
	Shibpur	3.98		Mirzaganj	5.85	Belkuchi	1.75	
Natore	Bagati Para	1.93	Patuakhali Sadar	7.52	Sirajganj	Chauhali	2.12	
	Baraigram	1.37	Bhandaria	8.83		Kamarkhanda	2.12	
	Gurudaspur	2.86	Kawkhali	4.36		Kazipur	2.68	
	Lalpur	1.56	Mathbaria	8.27		Royganj	7.34	
	Natore Sadar	1.56	Nazirpur	5.29		Shahjadpur	2.30	
	Singra	1.56	Nesarabad (Swarupkati)	6.41		Sirajganj Sadar	1.93	
Nawabganj	Bholahat	1.56	Pirojpur Sadar	3.80	Tarash	2.86		
	Gomastapur	3.24	Zianagar	7.52	Ullah Para	2.49		
	Nachole	2.68	Rajbari	Balia Kandi	6.96	Sunamganj	Bishwambarpur	6.03
	Nawabganj Sadar	2.49		Goalandaghat	4.73		Chhatak	6.41
Shibganj (Nawabganj)	2.49	Pangsha		3.42	Derai		5.66	
Netrakona	Atpara	4.17	Rajbari Sadar	6.41	Dharampasha		3.80	
	Barhatta	3.61	Bagha	2.68	Dowarabazar		4.91	
	Durgapur (Netrakona)	6.03	Baghmara	3.05	Jagannathpur		9.95	
	Kalmakanda	6.41	Boalia	9.60	Jamalganj	4.36		
	Kendua	5.10	Charghat	3.42	South Sunamganj	4.36		
	Khatiajuri	3.42	Durgapur (Rajshahi)	3.80	Sulla	3.98		
	Madan	6.13	Godagari	1.93	Sunamganj Sadar	6.03		
	Mohanganj	3.80	Mohanpur	5.29	Tahirpur	4.91		
	Netrokona Sadar	4.91	Paba	2.30	Sylhet	Balaganj	8.83	
	Purbadhala	8.83	Puthia	3.05		Beani Bazar	9.02	
Nilphamari	Dimla	4.17	Tanore	3.05		Bishwanath	11.81	
	Domar	5.29	Rangamati	Baghai Chhari		3.24	Companiganj (Sylhet)	6.03
	Jaldhaka	5.29		Barkal		3.05	Fenchuganj	5.85
	Kishoreganj	6.03		Belai Chhari		1.56	Golabganj	8.08
	Nilphamari Sadar	4.17		Jurai Chhari	3.05	Gowainghat	5.29	
	Saidpur	6.41		Kaptai	5.85	Jaintiapur	2.86	
Noakhali	Begumganj	2.12		Kawkhali (Betunia)	6.03	Kanaighat	6.03	
	Chatkhil	4.73	Langadu	3.05	Kotwali (Sylhet)	9.60		
	Companiganj (Noakhali)	3.05	Nanner Char	3.05	South Surma	9.60		
	Hatiya	6.22	Rajasthali	5.85	Zakiganj	5.66		
	Kabirhat	3.33	Rangamati Sadar	5.10	Tangail	Basail	3.98	
	Noakhali Sadar (Sudharampur)	4.73	Rangpur	Badarganj		10.13	Bhuapur	2.12
	Senbagh	6.59		Gangachara		6.59	Delduar	2.49
	Sonaimuri	4.36		Kaunia		2.49	Dhanbari	6.22
Subarnachar	3.52	Mitha Pukur		6.22		Ghatail	1.56	
Pabna	Atgharia	1.75		Pirgachha		6.22	Gopalpur	2.68
	Bera	2.86		Pirganj (Rangpur)		5.66	Kalihati	2.68
	Bhangura	3.61	Rangpur Sadar	9.60		Madhupur	3.98	
	Chatmohar	1.93	Taraganj	6.96		Mirzapur	1.37	
	Faridpur	2.68	Satkhira	Assasuni		5.47	Nagarpur	3.80
	Ishwardi	2.30		Debhata	4.08	Sakhipur	4.36	
	Pabna Sadar	2.12		Kalaroa	5.66	Tangail Sadar	2.86	
	Santhia	2.12		Kaliganj (Satkhira)	6.50	Thakurgaon	Baliadangi	9.95
Sujanagar	1.75	Satkhira Sadar		6.22	Haripur		3.80	
Panchagarh	Atwari	6.78		Shyamnagar	8.08		Pirganj (Thakurgaon)	4.91
	Boda	6.59	Tala	3.42	Ranisankail		6.22	
	Debiganj	6.59	Bhedarganj	5.10	Thakurgaon Sadar	5.10		
	Panchagarh Sadar	6.96	Damudya	3.61				
	Tentulia	3.42	Gosairhat	4.54				
Shariatpur	Naria	5.85	Shariatpur	Naria	5.85			
	Palong	6.03		Palong	6.03			
	Zanjira	4.73		Zanjira	4.73			

Data Compiled by GIS Lab UDD, 2020

Rural Economy related Infrastructure

Based on available data, economic services are calculated on 5 (five) indicators. They are: cold storage, food godown, growth center, rural market and gas field.

Inf. and Services : Water Based Communication Services



Inf. and Services : Water Based Communication Services

Index Score and Summary Table of Growth Center Urban Suitability Considering Water based Communication Services

Suitability Chart No. 22 (a): Growth Center Urban Suitability Statistics Considering Water based Communication Services								
Suitability Index Score	Administrative Level	Growth Center	Urban Population 2011	(%)	Total Population 2011	(%)	Area (SqKm)	(%)
Score: 4.01 to 6.00	Paurashava_HQ	5	1534567	1.07	173015	0.51	1494.98	1.03
	Upazila_HQ	2	664321	0.46	21119	0.06	469.13	0.32
Score: 3.01 to 4.00	District_HQ	3	804397	0.56	255960	0.76	1140.72	0.78
	Paurashava_HQ	19	4787894	3.34	452574	1.34	5084.57	3.49
Score: 2.18 to 3.00	Upazila_HQ	5	921589	0.64	122117	0.36	1158.65	0.80
	District_HQ	7	2228015	1.55	553805	1.64	2100.26	1.44
	Paurashava_HQ	35	10498645	7.33	1507305	4.46	11167.90	7.67
Score: 1.34 to 2.17	Upazila_HQ	22	4115869	2.87	296239	0.88	4762.32	3.27
	City Corporation	9	8101654	5.65	5510146	16.29	1902.72	1.31
	District_HQ	18	6868624	4.79	1844865	5.46	6277.38	4.31
Score: 1.00 to 1.33	Paurashava_HQ	88	23905739	16.68	4140767	12.24	23074.54	15.85
	Upazila_HQ	54	10501292	7.33	647481	1.91	15649.19	10.75
Score: 1.00 to 1.33	Capital	1	8747042	6.10	8747042	25.86	305.84	0.21
	City Corporation	4	1931159	1.35	1427106	4.22	450.02	0.31
	District_HQ	25	10204288	7.12	2540469	7.51	7973.58	5.48
Score: 1.00 to 1.33	Paurashava_HQ	116	33537004	23.40	4605248	13.62	39050.78	26.83
	Upazila_HQ	71	13969635	9.75	973966	2.88	23484.74	16.14
Total		484	143321734	100	33819224	100	145547.31	100

Data Compiled by GIS Lab UDD, 2020

Suitability Chart No. 22 (b): Name of Growth Center and Urban Suitability Considering Water based Communication Services			
Suitability Index Score	Administrative Level	Growth Center	Name of Growth Center
Score: 4.01 to 6.00	Paurashava_HQ	5	Bakerganj, Matlab, Mirzapur, Purbadhala, Uttar Matlab
	Upazila_HQ	2	Bishwanath, Hathazari
Score: 3.01 to 4.00	District_HQ	3	Faridpur Sadar, Palong, Rangamati Sadar
	Paurashava_HQ	19	Ajmiriganj, Banchharampur, Dharampasha, Dhunat, Homna, Kazipur, Kotali Para, Manohardi, Meghna, Melandaha, Mohanganj, Nalitabari, Nandail, Naria, Royganj, Roypura, Sherpur, Sulla, Zanjira
Score: 2.18 to 3.00	Upazila_HQ	5	Boalkhali, Daulatpur (Manikganj), Itna, Kaliganj (Lalmonirhat), Mirzaganj
	District_HQ	7	Dumki, Gopalganj Sadar, Jhalokati Sadar, Joypurhat Sadar, Nawabganj Sadar, Patuakhali Sadar, Satkhira Sadar
	Paurashava_HQ	35	Badarganj, Bagher Para, Barura, Bera, Bhedarganj, Chandina, Daudkandi, Durgapur (Netrakona), Gaffargaon, Gauripur, Gobindaganj, Gurudaspur, Hossainpur, Jiban Nagar, Kachua (Chandpur), Kala Para, Kalia, Kaliganj (Jhenaidah), Kaptai, Madan, Madarganj, Mahadebpur, Mongla, Palash, Patnitala, Rajasthali, Rangunia, Sandwip, Savar, Shahjadpur, Shalika, Shibpur, Sreepur (Gazipur), Tarash, Titash
Score: 1.00 to 1.33	Upazila_HQ	22	Alfadanga, Austagram, Balaganj, Baliadangi, Bamna, Basail, Bhandaria, Dhobaura, Fenchuganj, Ghior, Haluaghat, Kalmakanda, Kamarkhanda, Kishoreganj, Kutubdia, Nawabganj (Dhaka), Nazirpur, Pekua, Rajoir, Raninagar, Sapahar, Shibalaya

Suitability Chart No. 22 (b): Name of Growth Center and Urban Suitability Considering Water based Communication Services			
Suitability Index Score	Administrative Level	Growth Center	Name of Growth Center
Score: 1.34 to 2.17	City Corporation	9	Bandar, Barishal Sadar (Kotwali), ChattogramCity (Kotwali), Cumilla Sadar (Kotwali), Cumilla Sadar Dakshin (Kotoali), Kotwali (Sylhet), Mymensingh Sadar, Narayanganj Sadar, South Surma
	District_HQ	18	Bagerhat Sadar, Bandarban Sadar, Barguna Sadar, Chandpur Sadar, Chuadanga Sadar, Dinajpur Sadar, Jamalpur Sadar, Kotwali (Jashore), Lalmonirhat Sadar, Magura Sadar, Meherpur Sadar, Mujibnagar, Netrokona Sadar, Pabna Sadar, Pirojpur Sadar, Rajbari Sadar, Tangail Sadar, Thakurgaon Sadar
	Paurashava_HQ	88	Abhaynagar, Akkelpur, Alamdanga, Amtali, Ashuganj, Baghmara, Bajitpur, Bakshiganj, Betagi, Bhairab, Bhaluka, Bhangura, Bheramara, Birampur, Bochaganj, Chandanaish, Charghat, Chaugachha, Chhagalnaiya, Damudya, Damurhuda, Dewanganj, Dhamoirhat, Dhamrai, Dhanbari, Dhupchanchia, Dohar, Domar, Fulbari, Fulbaria, Gangni, Gazipur Sadar, Ghoraghat, Goalandaghat, Gomastapur, Gopalpur, Harinakunda, Ishwarganj, Islampur, Jaldhaka, Kalai, Kalaroa, Kaliakair, Kalihati, Kalkini, Karimganj, Katiadi, Kawkhali (Betunia), Khetlal, Khoksa, Kular Char, Madhupur, Matiranga, Mehendiganj, Mirpur, Mirsharai, Mohanpur, Muladi, Munshiganj Sadar, Nabinagar, Nachole, Nagarkanda, NaklaNalchity, Nandigram, Nesarabad, (Swarupkati), Pakundia, Panchbibi, Pangsha, Phulpur, Phultala, Ramgarh, Ranisankail, Roazan, Roypur, Sarishabari, Satkania, Sharsha, Sitakunda, Sonatola, Sreebardi, Sujanagar, Sundarganj, Tanore, Teknaf, Trishal, Tungi Para, Ulipur
Score: 1.00 to 1.33	Upazila_HQ	54	Agailjhara, Araihasar, Assasuni, Atpara, Babuganj, Badalgachhi, Balia Kandi, Belabo, Belai Chhari, Char Rajibpur, Chitalmari, Dashmina, Daulatpur (Kushtia), Debhata, Delduar, Dighalia, Dimla, Fatikchhari, Fulchhari, Gowainghat, Haripur, Harirampur, Hizla, Jhenaigati, Kaharole, Kaliganj (Gazipur), Kaliganj (Satkhira), Kanthalia, Kapasia, Kashiani, Khaliajuri, Khansama, Lakhai, Langadu, Madhukhali, Mithamain, Muradnagar, Nagarpur, Nanner Char, Niamatpur, Palashbari, Porsha, Rajapur, Rajarhat, Raumari, Ruma, Rupsa, Sadarpur, Saghatta, Sauria, Sreenagar, Taraganj, Thanchi, Wazirpur
	Capital	1	Dhaka City (Tejgaon)
	City Corporation	4	Boalia, Khan Jahan Ali, Khulna Sadar, Rangpur Sadar
Score: 1.00 to 1.33	District_HQ	25	Baniachong, Bhola Sadar, Bishwambarpur, BoguraSadar, Brahmanbaria Sadar, Cox'S Bazar Sadar, Feni Sadar, Gaibandha Sadar, Jhenaidaha Sadar, Kishoreganj Sadar, Kurigram Sadar, Kushtia Sadar, Lakshmipur Sadar, Madaripur Sadar, Manikganj Sadar, Maulvi Bazar Sadar, Naogaon Sadar, Narail Sadar, Nilphamari Sadar, Noakhali Sadar (Sudharampur), Panchagarh Sadar, Shajahanpur (Majhira), Sherpur Sadar, Sirajganj Sadar, Sunamganj Sadar
	Paurashava_HQ	116	Adamdighi, Akhaura, Anowara, Atgharia, Bagati Para, Bagha, Baghai Chhari, Banari Para, Banshkhal, Baraigram, Barlekha, Bauphal, Beani Bazar, Begumganj, Belkuchi, Bhangra, Bhuapur, Birganj, Boalmari, Boda, Burhanuddin, Chakaria, Char Fasson, Chatkhil, Chatmohar, Chauddagam, Chhatak, Chunarughat, Companiganj (Noakhali), Dacope, Daganbhuiyan, Daulatkhani, Debidwar, Derai, Durgapur (Rajshahi), Faridganj, Faridpur, Fulgazi, Gabtali, Galachipa, Gauradi, Ghatal, Godagari, Golabganj, Habiganj Sadar, Haim Char, Hajiganj, Hakimpur, Hatiya, Ishwardi, Jagannathpur, Jhikargachha, Juri, Kabirhat, Kahaloo, Kamalganj, Kanaighat, Kasba, Kaunia, Kendua, Keshabpur, Khagrachhari Sadar, Kotchandpur, Kulaura, Kumarkhali, Laksam, Lalmohan, Lalpur, Lama, Lohagara (Narail), Madhabpur, Maheshkhali, Maheshpur, Manirampur, Mathbaria, Monoharganj, Morrelganj, Muksudpur, Muktagachha, Nabiganj, Nageshwari, Nangalkot, Narsingdi Sadar, Natore Sadar, Paba, Paikgachha, Parbatipur, Parshuram, Patgram, Patharghata, Patiya, Pirganj (Thakurgaon), Puthia, Ramganj, Ramgati, Rupganj, Saidpur, Sakhipur, Santhia, Sarankhola, Sariakandi, Senbagh, Shahrasti, Shaikhkupa, Shib Char, Shibganj (Bogura), Shibganj (Nawabganj), Singair, Singra, Sonagazi, Sonaimuri, Sonargaon, Sreemangal, Ullah Para, Zakiganj, Zianagar
	Upazila_HQ	71	Aditmari, Alikadam, Atrai, Atwari, Bahubal, Barhatta, Barkal, Batiaghata, Bholahat, Bhurungamari, Biral, Brahman Para, Burichang, Char Bhadrasan, Chauhali, Chilmari, Chirirbandar, Companiganj (Sylhet), Debiganj, Dighinala, Dowerabazar, Dumuria, Fakirhat, Gangachara, Gazaria, Gosairhat, Hatibandha, Jaintiapur, Jamalganj, Jurai Chhari, Kachua (Bagerhat), Kawkhali, Keraniganj, Koyra, Lakshmichhari, Lohagara (Chattogram), Lohajang, Mahalchhari, Manda, Manikchhari, Manpara, Mitha Pukur, Mohammadpur, Mollahat, Naikhongchhari, Nasirnagar, Nawabganj (Dinajpur), Nikli, Panchhari, Phulbari, Pirgachha, Pirganj (Rangpur), Rajnagar, Rampal, Ramu, Rowangchhari, Sadullapur, Sarail, Serajdikhan, Shyamnagar, South Sunamganj, Sreepur (Magura), Subarnachar, Tahirpur, Tala, Tarail, Tazumuddin, Tentulia, Terokhada, Tongibari, Ukhia

Data Compiled by GIS Lab UDD, 2020

Water Based Communication Services

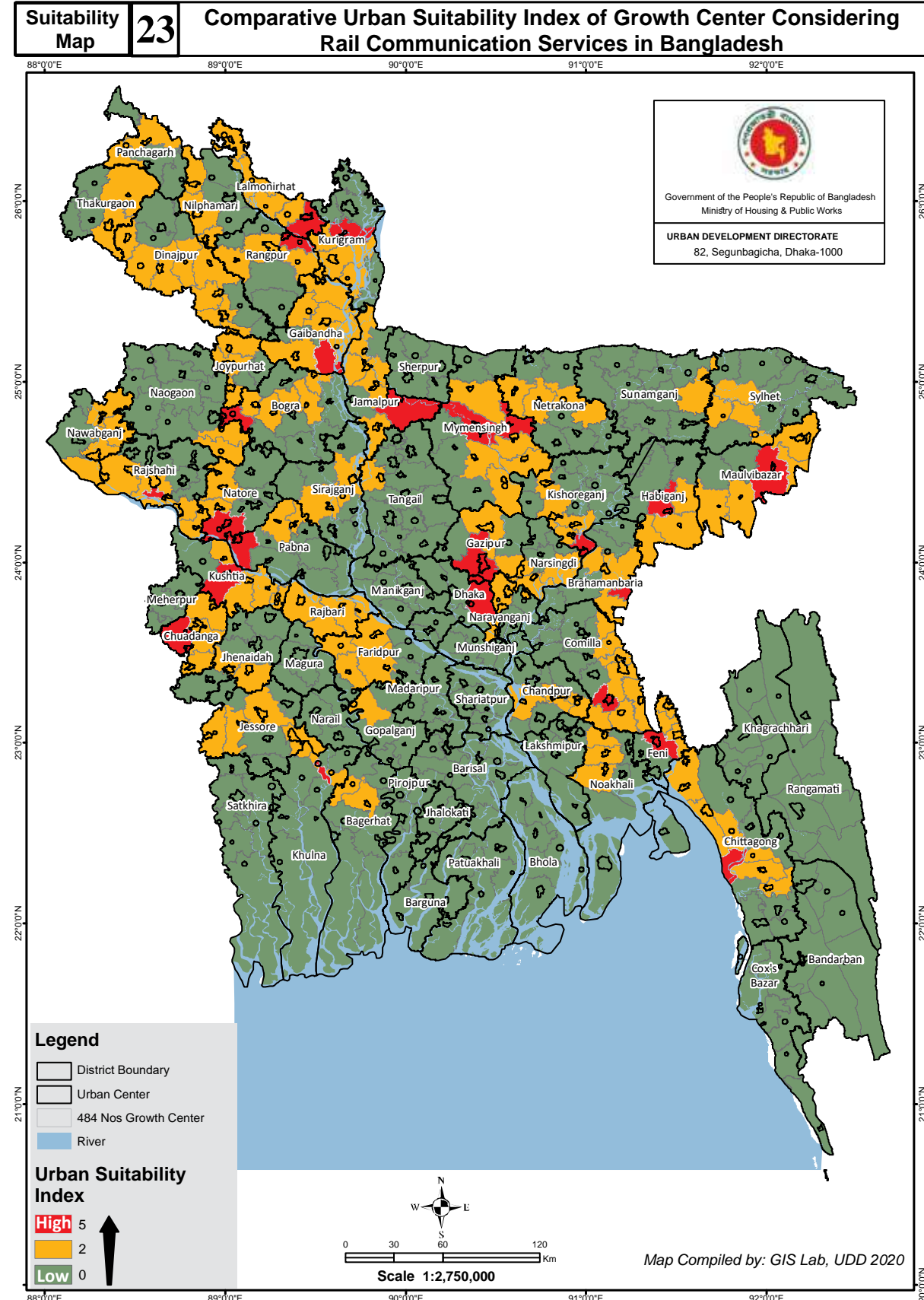
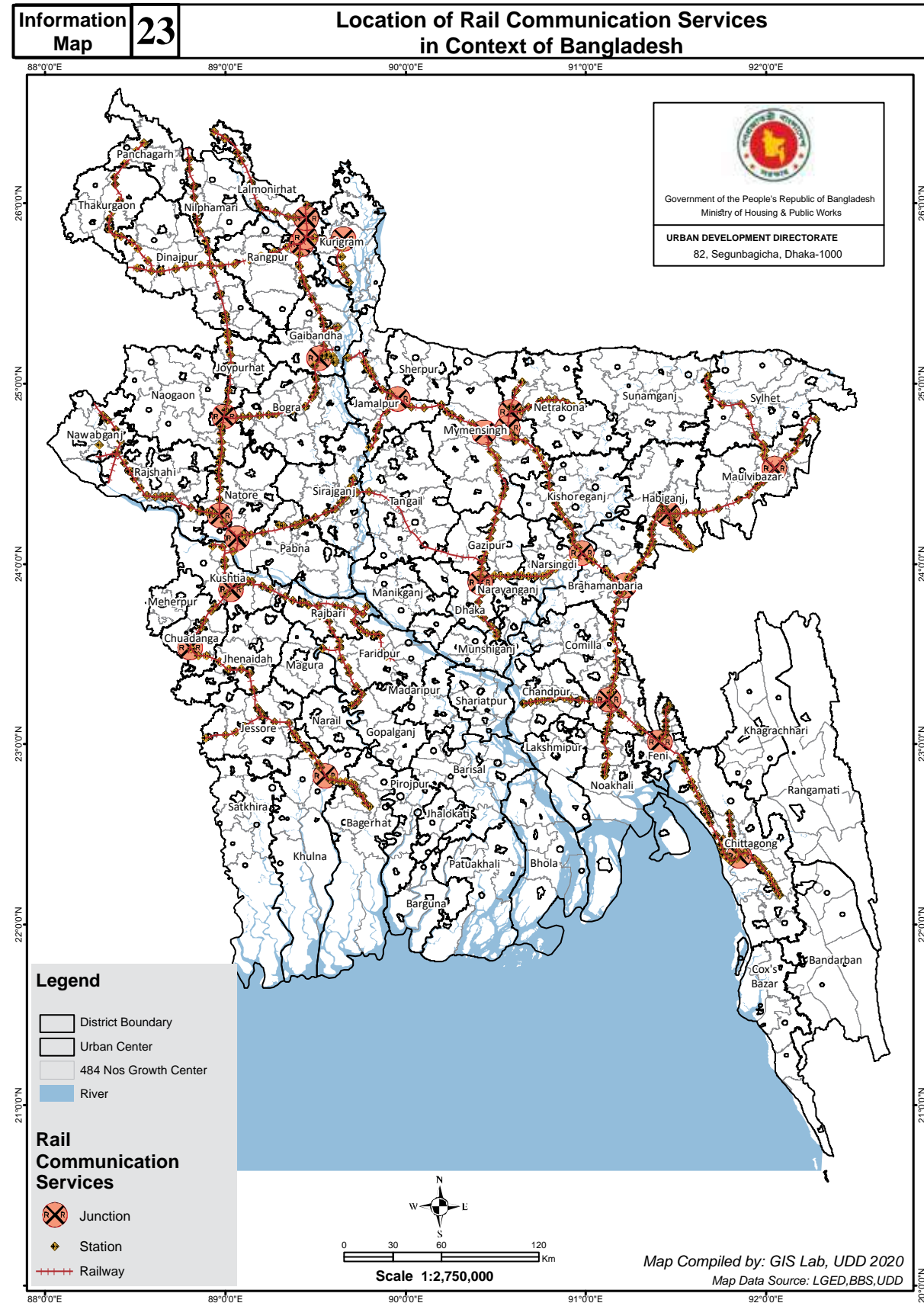
Based on available data, economic services are calculated on 6 (six) indicators. They are: ferry ghat, steamer ghat, helipad, lanch ghat, post office and telegraph office.

District wise Index Score of Each Growth Center Urban Suitability Considering Water based Communication Services in Alphabetical Order

District	Growth Center	Suitability	District	Growth Center	Suitability	District	Growth Center	Suitability		
Narsingdi	Belabo	1.67	Patuakhali	Bauphal	1.33	Sherpur	Jhenaigati	1.83		
	Manohardi	3.33		Dashmina	1.67		Nakla	1.50		
	Narsingdi Sadar	1.33		Dumki	2.50		Nalitabari	3.33		
	Natore	Palash		3.00	Pirojpur	Galachipa	1.17	Sirajganj	Sherpur Sadar	1.33
		Royapura		3.83		Kala Para	2.33		Belkuchi	1.00
		Shibpur		2.50		Mirzaganj	3.50		Chauhali	1.33
Bagati Para		1.00	Patuakhali Sadar	2.50		Kamarkhanda	2.50			
Baraigram		1.00	Bhandaria	2.33		Kazipur	3.33			
Nawabganj	Gurudaspur	2.67	Kawkhali	1.33		Royganj	3.33			
	Lalpur	1.00	Mathbaria	1.33		Shahjampur	2.33			
	Natore Sadar	1.00	Nazirpur	2.67		Sirajganj Sadar	1.33			
	Singra	1.00	Nesarabad (Swarupkati)	1.67		Tarash	2.67			
	Bholahat	1.33	Pirojpur Sadar	1.67		Ullah Para	1.00			
Netrakona	Gomastapur	1.67	Rajbari	Zianagar	1.17	Sunamganj	Bishwambarpur	1.00		
	Nachole	1.50		Balia Kandi	1.67		Chhatak	1.17		
	Nawabganj Sadar	3.00		Goalandaghat	2.00		Derai	1.17		
	Shibganj (Nawabganj)	1.33	Pangsha	1.50	Dharampasha		3.83			
	Atpara	2.00	Rajbari Sadar	2.17	Dowarabazar		1.00			
	Barhatta	1.17	Rajshahi	Bagha	1.00		Jagannathpur	1.33		
	Durgapur (Netrakona)	2.67		Baghmara	1.83		Jamalganj	1.33		
	Kalmakanda	2.33		Boalia	1.00		South Sunamganj	1.33		
	Kendua	1.33		Charghat	1.50		Sulla	3.33		
	Khaliajuri	1.83		Durgapur (Rajshahi)	1.17		Sunamganj Sadar	1.00		
Madan	3.00	Godagari		1.00	Tahirpur	1.17				
Mohanganj	3.83	Mohanpur		1.67	Sylhet	Balaganj	2.83			
Netrokona Sadar	1.67	Paba		1.00		Beani Bazar	1.00			
Purbadhala	4.33	Puthia		1.17		Bishwanath	5.00			
Nilphamari	Dimla	2.00		Rangamati		Tanore	1.67	Companiganj (Sylhet)	1.00	
	Domar	1.50	Baghai Chhari			1.00	Fenchuganj	2.50		
	Jaldhaka	1.50	Barkal			1.33	Golabganj	1.17		
	Kishoreganj	2.67	Belai Chhari			1.50	Gowainghat	1.83		
	Nilphamari Sadar	1.00	Jurai Chhari			1.33	Jaintiapur	1.33		
Noakhali	Saidpur	1.33	Rangpur			Kaptai	2.33	Kanaighat	1.00	
	Begumganj	1.17				Kawkhali (Betunia)	2.00	Kotwali (Sylhet)	1.67	
	Chatkhil	1.33			Langadu	1.50	South Surma	1.67		
	Companiganj (Noakhali)	1.33			Nanner Char	1.50	Zakiganj	1.33		
	Hatiya	1.17			Rajasthali	2.33	Tangail	Basail	2.83	
	Kabirhat	1.17		Rangamati Sadar	3.50	Bhuapur		1.17		
Noakhali Sadar (Sudharampur)	1.00	Rangpur		Badarganj	3.00	Delduar		2.00		
Senbagh	1.00			Gangachara	1.00	Dhanbari		1.50		
Sonaimuri	1.00			Kaunia	1.00	Ghatail		1.33		
Subarnachar	1.00			Mitha Pukur	1.33	Gopalpur		1.50		
Pabna	Atgharia		1.17	Pirgachha	1.33	Kalihati		1.50		
	Bera		2.33	Pirganj (Rangpur)	1.00	Madhupur		2.00		
	Bhangura	1.50	Rangpur Sadar	1.00	Mirzapur	4.33				
	Chatmohar	1.33	Taraganj	1.83	Nagarpur	2.00				
	Faridpur	1.33	Satkhira	Assasuni	1.83	Sakhipur	1.17			
	Ishwardi	1.33		Debhata	2.17	Tangail Sadar	1.67			
	Pabna Sadar	2.00		Kalaroa	1.83	Thakurgaon	Baliadangi	2.50		
Santhia	1.33	Kaliganj (Satkhira)		1.50	Haripur		2.00			
Sujanagar	2.00	Satkhira Sadar		2.67	Pirganj (Thakurgaon)		1.33			
Panchagarh	Atwari	1.00		Shyamnagar	1.00		Ranisankail	1.83		
	Boda	1.00		Tala	1.00		Thakurgaon Sadar	1.50		
	Debiganj	1.33		Shariatpur	Bhedarganj		2.50			
	Panchagarh Sadar	1.00			Damudya	1.50				
	Tentulia	1.00			Gosairhat	1.17				
		Naria	3.67							
		Palong	3.83							
		Zanjira	3.33							

Data Compiled by GIS Lab UDD, 2020

Inf. and Services : Rail Communication Services



Inf. and Services : Rail Communication Services

Index Score and Summary Table of Growth Center Urban Suitability Considering Rail Communication Services

Suitability Chart No. 23 (a): Growth Center Urban Suitability Statistics Considering Rail Communication Services								
Suitability Index Score	Administrative Level	Growth Center	Urban Population 2011	(%)	Total Population 2011	(%)	Area (SqKm)	(%)
Junction Score: 5	Capital	1	8747042	6.10	8747042	25.86	305.8375	0.21
	City Corporation	4	5027538	3.51	4629597	13.69	644.7603	0.44
	District_HQ	4	1673292	1.17	348275	1.03	1248.689	0.86
	Paurashava_HQ	13	5201982	3.63	1357297	4.01	3407.911	2.34
	Upazila_HQ	1	267819	0.19	15883	0.05	228.1878	0.16
Station Score: 2	City Corporation	7	4165417	2.91	1802056	5.33	1346.85	0.93
	District_HQ	20	9067138	6.33	2649459	7.83	6876.392	4.72
	Paurashava_HQ	88	25450496	17.76	3895318	11.52	23750.74	16.32
	Upazila_HQ	28	6055899	4.23	418834	1.24	6073.818	4.17
Null Score: 0	City Corporation	2	839858	0.59	505599	1.50	361.1279	0.25
	District_HQ	29	9364894	6.53	2197365	6.50	9366.853	6.44
	Paurashava_HQ	162	43611371	30.43	5626294	16.64	52714.13	36.22
	Upazila_HQ	125	23848988	16.64	1626205	4.81	39222.02	26.95
Total		484	143321734	100	33819224	100	145547.3	100

Data Compiled by GIS Lab UDD, 2020

Suitability Chart No. 23 (b): Name of Growth Center and Urban Suitability Considering Rail Communication Services			
Suitability Index Score	Administrative Level	Growth Center	Name of Growth Center
Junction Score: 5	Capital	1	Dhaka City (Tejgaon)
	City Corporation	4	Boalia, Chattogram City (Kotwali), Khulna Sadar, Mymensingh Sadar
	District_HQ	4	Feni Sadar, Jamalpur Sadar, Kurigram Sadar, Lalmonirhat Sadar
	Paurashava_HQ	13	Adamdighi, Akhaura, Bhairab, Damurhuda, Gauripur, Gazipur Sadar, Habiganj Sadar, Ishwardi, Kaunia, Kulaura, Laksam, Lalpur, Mirpur
	Upazila_HQ	1	Saghatta
Station Score: 2	City Corporation	7	Cumilla Sadar (Kotwali), Cumilla Sadar Dakshin (Kotoali), Khan Jahan Ali, Kotwali (Sylhet), Narayanganj Sadar, Rangpur Sadar, South Surma
	District_HQ	20	Bagerhat Sadar, Bogura Sadar, Brahmanbaria Sadar, Chandpur Sadar, Chuadanga Sadar, Dinajpur Sadar, Faridpur Sadar, Gaibandha Sadar, Joypurhat Sadar, Kishoreganj Sadar, Kotwali (Jashore), Kushtia Sadar, Nawabganj Sadar, Netrokona Sadar, Nilphamari Sadar, Noakhali Sadar (Sudharampur), Panchagarh Sadar, Rajbari Sadar, Sirajganj Sadar, Thakurgaon Sadar
	Paurashava_HQ	88	Abhaynagar, Akkelpur, Alamdanga, Ashuganj, Badarganj, Bagati Para, Bagha, Bajitpur, Barlekha, Begumganj, Bhangura, Bheramara, Bhuapur, Birampur, Boalmari, Bochaganj, Chandanaish, Charghat, Chatmohar, Chauddagam, Chhagalnaiya, Chhatak, Chunarughat, Dewanganj, Dhupchanchia, Domar, Fulbari, Fulgazi, Gabtali, Gaffargaon, Goalandaghat, Gobindaganj, Godagari, Gomastapur, Hajiganj, Hakimpur, Ishwarganj, Islampur, Jhikargachha, Jiban Nagar, Juri, Kahaloo, Kaliganj (Jhenaidah), Kamalganj, Kasba, Katiadi, Khoksa, Kotchandpur, Kuliar Char, Kumarkhali, Madhabpur, Melandaha, Mirsharai, Mohanganj, Monoharganj, Nachole, Nagarkanda, Nandail, Nangalkot, Narsingdi Sadar, Natore Sadar, Paba, Palash, Panchbibi, Pangsha, Parbatipur, Parshuram, Patgram, Patiya, Phulpur, Phultala, Pirganj (Thakurgaon), Purbadhala, Roypura, Rupganj, Saidpur, Sarishabari, Shahrasti, Sharsha, Sitakunda, Sonaimuri, Sonatola, Sreemangal, Sreepur (Gazipur), Sundarganj, Trishal, Ulipur, Ullah Para
	Upazila_HQ	28	Aditmari, Atrai, Atwari, Bahubal, Balia Kandi, Barhatta, Biral, Bishwanath, Boalkhali, Brahman Para, Burichang, Chilmari, Chirirbandar, Fakirhat, Fenchuganj, Fulchhari, Hathazari, Hatibandha, Kaliganj (Gazipur), Kaliganj (Lalmonirhat), Kamarkhanda, Kashiani, Madhukhali, Pargachha, Rajarhat, Raninagar, Rupsa, Sadullapur

Data Compiled by GIS Lab UDD, 2020

Suitability Chart No. 23 (b): Name of Growth Center and Urban Suitability Considering Rail Communication Services			
Suitability Index Score	Administrative Level	Growth Center	Name of Growth Center
Null Score: 0	City Corporation	2	Bandar, Barishal Sadar (Kotwali)
	District_HQ	29	Bandarban Sadar, Baniachong, Barguna Sadar, Bhola Sadar, Bishwambarpur, Cox'S Bazar Sadar, Dumki, Gopalganj Sadar, Jhalokati Sadar, Jhenaidaha Sadar, Lakshimpur Sadar, Madaripur Sadar, Magura Sadar, Manikganj Sadar, Maulvi Bazar Sadar, Meherpur Sadar, Mujibnagar, Naogaon Sadar, Narail Sadar, Pabna Sadar, Palong, Patuakhali Sadar, Pirojpur Sadar, Rangamati Sadar, Satkhira Sadar, Shajahanpur (Majhira), Sherpur Sadar, Sunamganj Sadar, Tangail Sadar
	Paurashava_HQ	162	Ajmiriganj, Amtali, Anowara, Atgharia, Baghai Chhari, Bagher Para, Baghmara, Bakerganj, Bakshiganj, Banari Para, Banchharampur, Banskhalai, Baraigram, Barura, Bauphal, Beani Bazar, Belkuchi, Bera, Betagi, Bhaluka, Bhanga, Bhedarganj, Birganj, Boda, Burhanuddin, Chakaria, Chandina, Char Fasson, Chatkhil, Chaugachha, Companiganj (Noakhali), Dacope, Daganbhuiyan, Damudya, Daudkandi, Daulatkhan, Debidwar, Derai, Dhamoirhat, Dhamrai, Dhanbari, Dharampasha, Dhunat, Dohar, Durgapur (Netrakona), Durgapur (Rajshahi), Faridganj, Faridpur, Fulbaria, Galachipa, Gangni, Gaurnadi, Ghatail, Ghoraghat, Golabganj, Gopalpur, Gurudaspur, Haim Char, Harinakunda, Hatiya, Homna, Hossainpur, Jagannathpur, Jaldhaka, Kabirhat, Kachua (Chandpur), Kala Para, Kalai, Kalaroa, Kalia, Kaliakair, Kalihati, Kalkini, Kanaighat, Kaptai, Karimganj, Kawkhali (Betunia), Kazipur, Kendua, Keshabpur, Khagrachhari Sadar, Khetlal, Kotali Para, Lalmohan, Lama, Lohagara (Narail), Madan, Madarganj, Madhupur, Mahadebpur, Maheshkhali, Maheshpur, Manirampur, Manohardi, Mathbaria, Matiranga, Matlab, Meghna, Mehendiganj, Mirzapur, Mohanpur, Mongla, Morrelganj, Muksudpur, Muktagachha, Muladi, Munshiganj Sadar, Nabiganj, Nabinagar, Nageshwari, Nakla, Nalchity, Nalitabari, Nandigram, Naria, Nesarabad (Swarupkati), Paikgachha, Pakundia, Patharghata, Patnitala, Puthia, Rajasthali, Ramganj, Ramgarh, Ramgati, Rangunia, Ranisankail, Raozan, Royganj, Roypur, Sakhipur, Sandwip, Santhia, Sarankhola, Sariakandi, Satkania, Savar, Senbagh, Shahjadpur, Shaikupa, Shalika, Sherpur, Shib Char, Shibganj (Bogura), Shibganj (Nawabganj), Shibpur, Singair, Singra, Sonagazi, Sonargaon, Sreebardi, Sujanagar, Sulla, Tanore, Tarash, Teknaf, Titash, Tungi Para, Uttar Matlab, Zakiganj, Zanjira, Zianagar
Upazila_HQ	125	Agailjhara, Alfadanga, Alikadam, Araihasar, Assasuni, Atpara, Austagram, Babuganj, Badalgachhi, Balaganj, Baliadangi, Bamna, Barkal, Basail, Batiaghata, Belabo, Belai Chhari, Bhandaria, Bholahat, Bhurungamari, Char Bhadransar, Char Rajibpur, Chauhali, Chitalmari, Companiganj (Sylhet), Dashmina, Daulatpur (Kushtia), Daulatpur (Manikganj), Debhata, Debiganj, Delduar, Dhobaura, Dighalia, Dighinala, Dimla, Dowarabazar, Dumuria, Fatikchhari, Gangachara, Gazaria, Ghior, Gosairhat, Gowainghat, Haluaghat, Haripur, Harirampur, Hizla, Itna, Jaintiapur, Jamalganj, Jhenaihati, Jurai Chhari, Kachua (Bagerhat), Kaharole, Kaliganj (Satkhira), Kalmakanda, Kanthalia, Kapasia, Kawkhali, Keraniganj, Khaliajuri, Khansama, Kishoreganj, Koyra, Kutubdia, Lakhai, Lakshnichhari, Langadu, Lohagara (Chattogram), Lohajang, Mahalchhari, Manda, Manikchhari, Manpara, Mirzaganj, Mitha Pukur, Mithamain, Mohammadpur, Mollahat, Muradnagar, Nagarpur, Naikhongchhari, Nanner Char, Nasirnagar, Nawabganj (Dhaka), Nawabganj (Dinajpur), Nazirpur, Niamatpur, Nikli, Palashbari, Panchhari, Pekua, Phulbari, Pirganj (Rangpur), Porsha, Rajapur, Rajnagar, Rajoir, Rampal, Ramu, Raumari, Rowangchhari, Ruma, Sadarpur, Sapahar, Sarail, Sauria, Serajdikhan, Shibalaya, Shyamnagar, South Sunamganj, Sreenagar, Sreepur (Magura), Subarnachar, Tahirpur, Tala, Taraganj, Tarail, Tazumuddin, Tentulia, Terokhada, Thanchi, Tongibari, Ukhia, Wazirpur	

Inf. and Services : Rail Communication Services

District wise Index Score of Each Growth Center Urban Suitability Considering Rail Communication Services in Alphabetical Order

District	Growth Center	Suitability
Bagerhat	Bagerhat Sadar	2
	Chitalmari	0
	Fakirhat	2
	Kachua (Bagerhat)	0
	Mollahat	0
	Mongla	0
	Morrelganj	0
	Rampal	0
	Sarankhola	0
	Alikadam	0
Bandarban	Bandarban Sadar	0
	Lama	0
	Naikhongchhari	0
	Rowangchhari	0
	Ruma	0
	Thanchi	0
Barguna	Amtali	0
	Bamna	0
	Barguna Sadar	0
	Betagi	0
Barishal	Patharghata	0
	Agailjhara	0
	Babuganj	0
	Bakerganj	0
	Banari Para	0
	Barishal Sadar (Kotwali)	0
	Gaurmadi	0
	Hizla	0
	Mehendiganj	0
	Muladi	0
Bhola	Wazirpur	0
	Bhola Sadar	0
	Burhanuddin	0
	Char Fasson	0
	Daulatkhan	0
	Lalmohan	0
	Manpura	0
	Tazumuddin	0
	Adamdighi	5
	BoguraSadar	2
Bogura	Dhunat	0
	Dhupchanchia	2
	Gabwali	2
	Kahaloo	2
	Nandigram	0
	Sariakandi	0
	Shajahanpur (Majhira)	0
	Sherpur	0
	Shibganj (Bogura)	0
	Sonatola	2
Brahmanbaria	Akhaura	5
	Ashuganj	2
	Banchharampur	0
	Brahmanbaria Sadar	2
	Kasba	2
	Nabinagar	0
	Nasirnagar	0
	Sarail	0

District	Growth Center	Suitability
Chandpur	Chandpur Sadar	2
	Faridganj	0
	Haim Char	0
	Hajiganj	2
	Kachua (Chandpur)	0
	Matlab	0
	Shahrasti	2
	Uttar Matlab	0
	Anowara	0
	Banshkhal	0
Chattogram	Boalkhali	2
	Chandanaish	2
	ChattogramCity (Kotwali)	5
	Fatikchhari	0
	Hathazari	2
	Lohagara (Chattogram)	0
	Mirsharai	2
	Patiya	2
	Rangunia	0
	Raozan	0
Chuadanga	Sandwip	0
	Satkania	0
	Sitakunda	2
	Alamdanga	2
	Chuadanga Sadar	2
	Damurhuda	5
	Jiban Nagar	2
	Barura	0
	Brahman Para	2
	Burichang	2
Cumilla	Chandina	0
	Chauddagram	2
	Cumilla Sadar (Kotwali)	2
	Cumilla Sadar Dakshin (Kotoali)	2
	Daudkandi	0
	Debidwar	0
	Homna	0
	Laksam	5
	Meghna	0
	Monoharganj	2
Cox's Bazar	Muradnagar	0
	Nangalkot	2
	Titash	0
	Chakaria	0
	Cox'S Bazar Sadar	0
	Kutubdia	0
	Maheshkhali	0
	Pekua	0
	Ramu	0
	Teknaf	0
Dhaka	Ukhia	0
	Dhaka City (Tejgaon)	5
	Dhamrai	0
	Dohar	0
	Keraniganj	0
	Nawabganj (Dhaka)	0
	Savar	0

District	Growth Center	Suitability
Dinajpur	Biral	2
	Birampur	2
	Birganj	0
	Bochaganj	2
	Chirirbandar	2
	Dinajpur Sadar	2
	Fulbari	2
	Ghoraghat	0
	Hakimpur	2
	Kaharole	0
Faridpur	Khansama	0
	Nawabganj (Dinajpur)	0
	Parbatipur	2
	Alfadanga	0
	Bhanga	0
	Kaliganj (Jhenaidah)	2
	Kotchandpur	2
	Char Bhadrasan	0
	Faridpur Sadar	2
	Madhukhali	2
Feni	Nagarkanda	2
	Sadarpur	0
	Chhagalnaiya	2
	Daganbhuiyan	0
	Feni Sadar	5
	Fulgazi	2
	Parshuram	2
	Sonagazi	0
	Fulchhari	2
	Gaibandha	Gaibandha Sadar
Gobindaganj		2
Palashbari		0
Sadullapur		2
Saghatta		5
Sundarganj		2
Gazipur Sadar		5
Kaliakair		0
Kaliganj (Gazipur)		2
Kopasia		0
Gazipur	Sreepur (Gazipur)	2
	Gopalganj Sadar	0
	Kashiani	2
	Kotali Para	0
	Muksudpur	0
	Tungi Para	0
	Ajmiriganj	0
	Bahubal	2
	Baniachong	0
	Chunarughat	2
Habiganj	Habiganj Sadar	5
	Lakhai	0
	Madhabpur	2
	Nabiganj	0
	Bakshiganj	0
	Dewanganj	2
	Islampur	2
	Jamalpur Sadar	5
	Madarganj	0
	Melandaha	2
Jamalpur	Sarishabari	2

District	Growth Center	Suitability
Jashore	Abhaynagar	2
	Bagher Para	0
	Chaugachha	0
	Jhikargachha	2
	Keshabpur	0
	Kotwali (Jashore)	2
	Manirampur	0
	Sharsha	2
	Jhalokati Sadar	0
	Jhalokati	Kanthalia
Nalchity		0
Rajapur		0
Harinakunda		0
Jhenaidah	Jhenaidaha Sadar	0
	Kaliganj (Jhenaidah)	2
	Kotchandpur	2
	Maheshpur	0
Joypurhat	Shailkupa	0
	Akkelpur	2
	Joypurhat Sadar	2
	Kalai	0
Khagrachhari	Khetlal	0
	Panchbibi	2
	Dighinala	0
	Khagrachhari Sadar	0
	Lakshmichhari	0
	Mahalchhari	0
	Manikchhari	0
	Matiranga	0
	Panchhari	0
	Ramgarh	0
Khulna	Batiaghata	0
	Dacope	0
	Dighalia	0
	Dumuria	0
	Khan Jahan Ali	2
	Khulna Sadar	5
	Koyra	0
	Paikgachha	0
	Phultala	2
	Rupsa	2
Kishoreganj	Terokhada	0
	Austagram	0
	Bajitpur	2
	Bhairab	5
	Hossainpur	0
	Itna	0
	Karimganj	0
	Katiadi	2
	Kishoreganj Sadar	2
	Kuliar Char	2
Mithamain	0	
Kishoreganj	Nikli	0
	Pakundia	0
	Tarail	0

District	Growth Center	Suitability
Kurigram	Bhurungamari	0
	Char Rajibpur	0
	Chilmari	2
	Kurigram Sadar	5
	Nageshwari	0
	Phulbari	0
	Rajarhat	2
	Raumari	0
	Ulipur	2
	Kushtia	Bheramara
Daulatpur (Kushtia)		0
Khoksa		2
Kumarkhali		2
Lakshmipur	Kushtia Sadar	2
	Mirpur	5
	Lakshmipur Sadar	0
	Ramganj	0
Lalmonirhat	Ramgati	0
	Roypur	0
	Aditmari	2
	Hatibandha	2
Madaripur	Kaliganj (Lalmonirhat)	2
	Lalmonirhat Sadar	5
	Patgram	2
	Kalkini	0
Magura	Madaripur Sadar	0
	Rajoir	0
	Shib Char	0
	Magura Sadar	0
Manikganj	Mohammadpur	0
	Shalikka	0
	Sreepur (Magura)	0
	Daulatpur (Manikganj)	0
	Ghior	0
	Harirampur	0
	Manikganj Sadar	0
	Saturia	0
	Shibalaya	0
	Singair	0
Maulvibazar	Barlekha	2
	Juri	2
	Kamalganj	2
	Kulaura	5
Meherpur	Maulvi Bazar Sadar	0
	Rajnagar	0
	Sreemangal	2
	Gangni	0
Munshiganj	Meherpur Sadar	0
	Mujibnagar	0
	Gazaria	0
	Lohajang	0
Munshiganj	Munshiganj Sadar	0
	Serajdikhan	0
	Sreenagar	0
	Tongibari	0

District	Growth Center	Suitability
Mymensingh	Bhaluka	0
	Dhobaura	0
	Fulbaria	0
	Gaffargaon	2
	Gauripur	5
	Haluaghat	0
	Ishwarganj	2
	Muktagachha	0
	Mymensingh Sadar	5
	Nandail	2
Naogaon	Phulpur	2
	Trishal	2
	Atrai	2
	Badalgachhi	0
	Dhamoirhat	0
	Mahadebpur	0
	Manda	0
	Naogaon Sadar	0
	Niamatpur	0
	Patnitala	0
Narail	Porsha	0
	Raninagar	2
	Sapahar	0
	Kalia	0
Narayanganj	Lohagara (Narail)	0
	Narail Sadar	0
	Araihazar	0
	Bandar	0
Narsingdi	Narayanganj Sadar	2
	Rupganj	2
	Sonargaon	0
	Belabo	0
Natore	Manohardi	0
	Narsingdi Sadar	2
	Palash	2
	Roytura	2
	Shibpur	0
	Bagati Para	2
	Baraigram	0
	Gurudaspur	0
	Lalpur	5
	Natore Sadar	2
Singra	0	
Nawabganj	Bholahat	0
	Gomastapur	2
	Nachole	2
	Nawabganj Sadar	2
Netrakona	Shibganj (Nawabganj)	0
	Atpara	0
	Barhatta	2
	Durgapur (Netrakona)	0
	Lohajang	0
	Kalmakanda	0
	Kendua	0
	Khaliajuri	0
	Madan	0
	Mohanganj	2
Netrokona Sadar	2	
Purbadhala	2	

District wise Index Score of Each Growth Center Urban Suitability Considering Rail Communication Services in Alphabetical Order

District	Growth Center	Suitability	District	Growth Center	Suitability	District	Growth Center	Suitability		
Nilphamari	Dimla	0	Rangamati	Baghai Chhari	0	Sylhet	Balaganj	0		
	Domar	2		Barkal	0		Beani Bazar	0		
	Jaldhaka	0		Belai Chhari	0		Bishwanath	2		
	Kishoreganj	0		Jurai Chhari	0		Companiganj (Sylhet)	0		
	Nilphamari Sadar	2		Kaptai	0		Fenchuganj	2		
	Saidpur	2		Kawkhali (Betunia)	0		Golabganj	0		
Noakhali	Begumganj	2		Langadu	0		Gowainghat	0		
	Chatkhil	0		Nanner Char	0		Jaintiapur	0		
	Companiganj (Noakhali)	0		Rajasthali	0		Kanaighat	0		
	Hatiya	0		Rangamati Sadar	0		Kotwali (Sylhet)	2		
	Kabirhat	0		Badarganj	2		South Surma	2		
	Noakhali Sadar (Sudharampur)	2		Gangachara	0		Zakiganj	0		
	Senbagh	0		Kaunia	5		Tangail	Basail	0	
	Sonaimuri	2		Mitha Pukur	0			Bhuapur	2	
	Subarnachar	0	Pirgachha	2	Delduar	0				
	Pabna	Atgharia	0	Pirganj (Rangpur)	0	Dhanbari		0		
Bera		0	Rangpur Sadar	2	Ghatail	0				
Bhangura		2	Taraganj	0	Gopalpur	0				
Chatmohar		2	Satkhira	Assasuni	0	Kalihati		0		
Faridpur		0		Debhata	0	Madhupur		0		
Ishwardi		5		Kalaroa	0	Mirzapur		0		
Pabna Sadar		0		Kaliganj (Satkhira)	0	Nagarpur		0		
Santhia		0		Satkhira Sadar	0	Sakhipur		0		
Sujanagar	0	Shyamnagar		0	Tangail Sadar	0				
Panchagarh	Atwari	2		Tala	0	Thakurgaon	Baliadangi	0		
	Boda	0		Shariatpur	Bhedarganj		0	Haripur	0	
	Debiganj	0	Damudya		0		Pirganj (Thakurgaon)	2		
	Panchagarh Sadar	2	Gosairhat		0		Ranisankail	0		
	Tentulia	0	Naria		0		Thakurgaon Sadar	2		
	Patuakhali	Bauphal	0		Palong		0	Sirajganj	Belkuchi	0
Dashmina		0	Zanjira		0	Chauhali	0			
Dumki		0	Jhenaigati	0	Kamarkhanda	2				
Galachipa		0	Nakla	0	Kazipur	0				
Kala Para		0	Nalitabari	0	Royganj	0				
Mirzaganj		0	Sherpur Sadar	0	Shahjadpur	0				
Patuakhali Sadar		0	Sreebardi	0	Sirajganj Sadar	2				
Pirojpur	Bhandaria	0	Sunamganj	Bishwambarpur	0	Tarash	0			
	Kawkhali	0		Chhatak	2	Ullah Para	2			
	Mathbaria	0		Derai	0	Tangail	Baliadangi		0	
	Nazirpur	0		Dharampasha	0		Haripur		0	
	Nesarabad (Swarupkati)	0		Dowarabazar	0		Pirganj (Thakurgaon)		2	
	Pirojpur Sadar	0		Jagannathpur	0		Ranisankail		0	
	Zianagar	0		Jamalganj	0		Thakurgaon Sadar		2	
Rajbari	Balia Kandi	2		South Sunamganj	0		Sirajganj	Belkuchi	0	
	Goalandaghat	2		Sulla	0			Chauhali	0	
	Pangsha	2		Sunamganj Sadar	0			Kamarkhanda	2	
	Rajbari Sadar	2		Tahirpur	0			Kazipur	0	
Rajshahi	Bagha	2		Tangail	Assasuni			0	Royganj	0
	Baghmara	0			Debhata			0	Shahjadpur	0
	Boalia	5			Kalaroa			0	Sirajganj Sadar	2
	Charghat	2	Kaliganj (Satkhira)		0			Tarash	0	
	Durgapur (Rajshahi)	0	Satkhira Sadar		0			Ullah Para	2	
	Godagari	2	Shyamnagar		0	Bishwambarpur		0		
	Mohanpur	0	Tala		0	Chhatak		2		
	Paba	2	Tangail		Bhedarganj	0		Derai	0	
	Puthia	0			Damudya	0		Dharampasha	0	
	Tanore	0			Gosairhat	0		Dowarabazar	0	
Rangamati	Baghai Chhari	0			Naria	0	Jagannathpur	0		
	Barkal	0			Palong	0	Jamalganj	0		
	Belai Chhari	0			Zanjira	0	South Sunamganj	0		
	Jurai Chhari	0			Jhenaigati	0	Sulla	0		
	Kaptai	0		Nakla	0	Sunamganj Sadar	0			
	Kawkhali (Betunia)	0		Nalitabari	0	Tahirpur	0			
	Langadu	0		Sherpur Sadar	0	Tangail	Basail	0		
	Nanner Char	0		Sreebardi	0		Bhuapur	2		
	Rajasthali	0		Chhatak	2		Delduar	0		
	Rangamati Sadar	0		Derai	0		Dhanbari	0		
	Badarganj	2		Dharampasha	0		Ghatail	0		
	Gangachara	0	Dowarabazar	0	Gopalpur		0			
	Kaunia	5	Jagannathpur	0	Kalihati		0			
	Mitha Pukur	0	Jamalganj	0	Madhupur		0			
Pirgachha	2	South Sunamganj	0	Mirzapur	0					
Pirganj (Rangpur)	0	Sulla	0	Nagarpur	0					
Rangpur Sadar	2	Sunamganj Sadar	0	Sakhipur	0					
Taraganj	0	Tahirpur	0	Tangail Sadar	0					

Data Compiled by GIS Lab UDD, 2020

Rail Communication Services

Rail communication service is a major component of communication facility in Bangladesh. A nation wide railway infrastructure was established in the country by the British government. Rail services are categorized between station and junction service.

