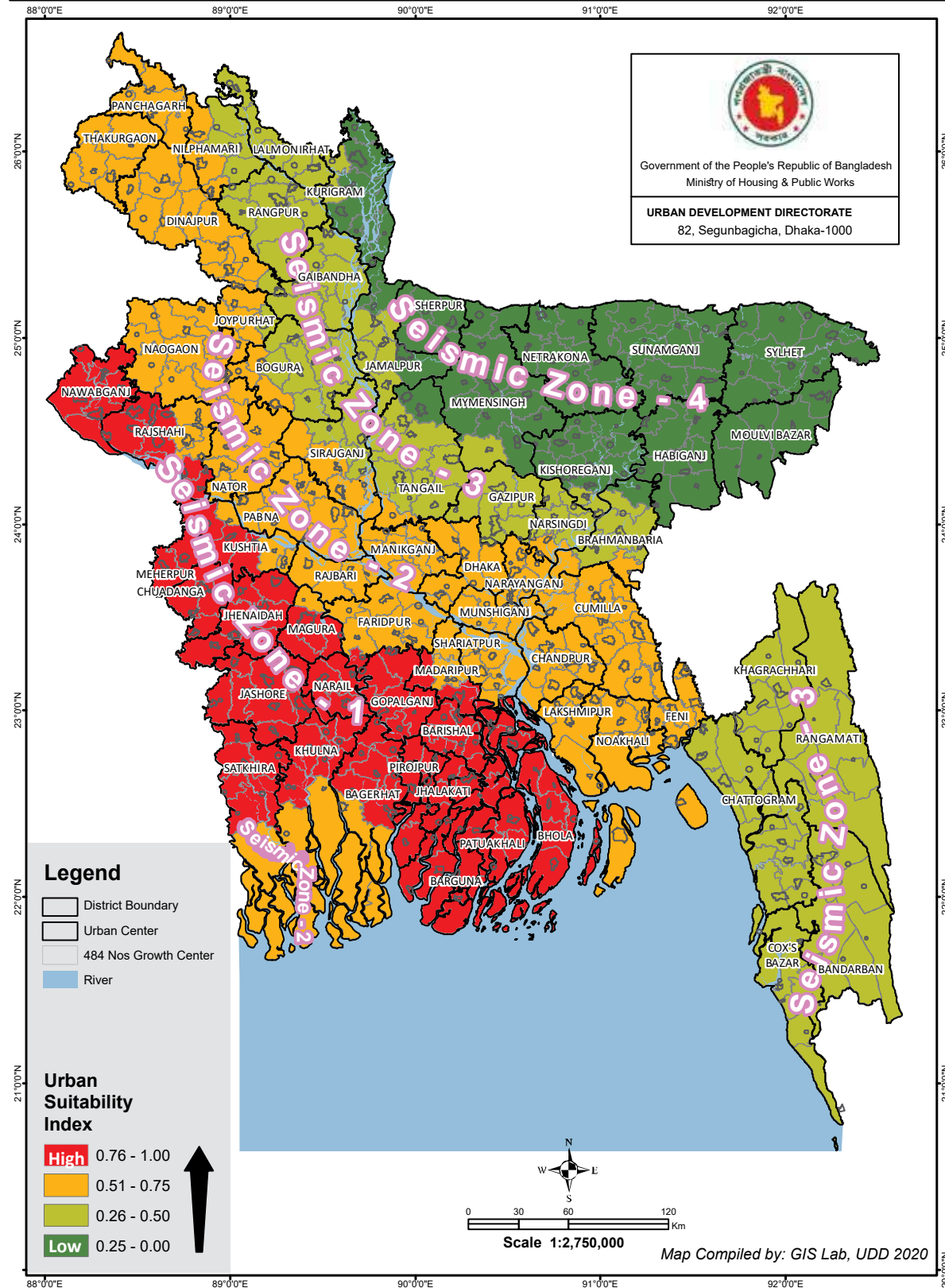


Suitability Map 08 Comperative Urban Suitability Index of Growth Center in Bangladesh Considering Seismic Charecter



Index score and summery table of growth center ecological suitability considering seismic character

Suitability Chart No 08 (a): Growth Center Ecological Suitability Statistics Considering Seismic Character

Seismic character and Ecological Suitability Index Score	Administrative Level	Growth Center (Nos)	Total Population 2011	(%)	Urban Population 2011	(%)	Area (SqKM)	(%)
Score: 0.75	City Corporation HQ	3	1668359	1.16	743529	2.20	881.850221	0.61
	District_HQ	8	3162232	2.21	758059	2.24	2522.933525	1.73
	Paurashava_HQ	41	12133646	8.47	1407023	4.16	13210.0856	9.08
	Upazilla_HQ	36	6855383	4.78	520185	1.54	9826.880403	6.75
Score: 1.5	City Corporation HQ	2	2538577	1.77	990070	2.93	778.9929278	0.54
	District_HQ	6	2923701	2.04	1033234	3.06	1771.044295	1.22
	Paurashava_HQ	40	12535749	8.75	1776429	5.25	10899.67344	7.49
Score: 2.25	Upazilla_HQ	24	6028466	4.21	427907	1.27	5644.768643	3.88
	CAP	1	8747042	6.10	8747042	25.86	305.837473	0.21
	City Corporation HQ	4	2596251	1.81	1117282	3.30	541.6354889	0.37
	District_HQ	19	8346424	5.82	2015080	5.96	6271.011126	4.31
Score: 3	Paurashava_HQ	88	24758365	17.27	3649298	10.79	24699.28652	16.97
	Upazilla_HQ	53	11526209	8.04	554126	1.64	15758.04733	10.83
	City Corporation HQ	5	5050000	3.52	4775782	14.12	608.3801841	0.42
	District_HQ	20	6541091	4.56	1880111	5.56	7124.438757	4.89
Total	Paurashava_HQ	69	18361694	12.81	2506086	7.41	25110.16145	17.25
	Upazilla_HQ	65	9548545	6.66	917981	2.71	19592.28465	13.46
Total		484	143321734	100.00	33819224	100.00	145547.312	100.00

Data Compiled by GIS Lab UDD, 2020

Suitability Chart No 08 (b): Name of Growth Center and Ecological Suitability Considering Seismic Character

Seismic character and Ecological Suitability Index Score	Administrative Level	Growth Center (Nos)	Name of Growth Center
Score: 0.75	City Corporation HQ	3	Mymensingh Sadar (MCC), South Surma (Sylhet CC), Sylhet Sadar (Sylhet CC)
	District_HQ	8	Habiganj Sadar & Shayestaganj, Jamalpur Sadar, Kishoreganj Sadar, Kurigram Sadar, Maulvi Bazar Sadar, Netrokona Sadar, Sherpur Sadar, Sunamganj Sadar
	Paurashava_HQ	41	Ajmiriganj, Bajitpur, Barlekha, Beanibazar, Chhatak, Chunarughat, Derai, Dewanganj, Dhanbari, Durgapur Netrokona, Fulbaria, Gaffargaon, Gauripur, Golabganj, Hossainpur, Ishwarganj, Jagannathpur, Kamalganj, Kanaighat, Karimganj, Katiadi, Kendua, Kulaura, Madan, Madhabpur, Madhupur, Mohanganj, Muktagachha, Nabiganj, Nageshwari, Nakla, Nalitabari, Nandail, Pakundia, Phulpur, Purbadhala, Sreebardi, Sreemangal, Trishal, Ulipur, Zakiganj
	Upazilla_HQ	36	Atpara, Austagram, Bahubal, Bakshiganj, Balaganj, Baniachong, Barhatta, Bhurungamari, Bishwambarpur, Bishwanath, Char Rajibpur, Chilmari, Companiganj Sylhet, Dharampasha, Dhobaura, Dowarabazar, Fenchuganj, Gowainghat, Haluaghat, Itna, Jaintiapur, Jamalganj, Jhenaigati, Juri, Kalmakanda, Khaliajuri, Lakhai, Mithamain, Nasirnagar, Nikli, Rajnagar, Raumar, South Sunamganj, Sulla, Tahirpur, Tarail
Score: 1.5	City Corporation HQ	2	Gazipur Sadar (GCC & Tongi), Rangpur Sadar (Rangpur CC)
	District_HQ	6	Bogura Sadar, Brahmanbaria Sadar, Gaibandha Sadar, Lalmonirhat Sadar, Sirajganj Sadar, Tangail Sadar
	Paurashava_HQ	40	Akhaura, Badarganj, Belkuchi, Bhairab, Bhaluka, Bhuapur, dhunat, gabtali, Ghatail, Ghoraghat, Ghorashal (Palash), Gobindaganj, Gopalpur, Haragacha (Kaunia), Islampur, Jaldhaka, kahaloo, Kalai, Kaliakair, Kaliganj Gazipur, Kalihati, Kazipur, Kuliar Char, Madarganj, Manohardi, Melandaha, Mirzapur, Nabinagar, Patgram, Raypura, Royganj, Sakhipur, sariakandi, Sarishabari, sherpur, Shibganj Bogra, Shibpur, Sonatola, Sreepur Gazipur, Sundarganj
Upazilla_HQ	24	Aditmari, Ashuganj, Basail, Belabo, Delduar, Dimla, Fulchhari, Gangachara, Hatibandha, Kaliganj Lalmonirhat, Kamarkhanda, Kapasia, Kishoreganj, Mitha Pukur, Palashbari, Phulbari, Pirgachha, Pirganj Rangpur, Rajarhat, Sadullapur, Saghatta, Sarail, Shajahanpur (Majhira) Bogra, Taraganj	

Ecological Variables : Seismic Zone

Suitability Chart No 08 (b): Name of Growth Center and Ecological Suitability Considering Seismic Character			
Seismic character and Ecological Suitability Index Score	Administrative Level	Growth Center (Nos)	Name of Growth Center
Score: 2.25	CAP	1	Dhaka City (DNCC & DSCC)
	City Corporation HQ	4	Bandar (NCC) & Tarabo, Cumilla Sadar (Cumilla CC), Narayanganj Sadar (NCC) & Shiddhirganj, South Cumilla (Cumilla CC)
	District_HQ	19	Chandpur Sadar, Dinajpur Sadar, Faridpur Sadar, Feni Sadar, Joypurhat Sadar, Lakshimpur Sadar, Madaripur Sadar, Manikganj Sadar, Munshiganj Sadar & Mirkadim, Naogaon Sadar, Narsingdi Sadar & Madhabdi, Natore Sadar & Naldanga, Nilphamari Sadar, Noakhali Sadar, Pabna Sadar, Panchagarh Sadar, Rajbari Sadar, Shariatpur Sadar, Thakurgaon Sadar
	Paurashava_HQ	88	Adamdighi, Akkelpur, Atgharia, Bagati Para, Baraigram & Banpara, Barura, Begumganj (Chowmuhan), Bera, Bhabanigonj (Baghmara) & Tahirpur, Bhanga, Bhangura, Bhedarganj, Bheramara, Birampur, Birganj, Boalmari, Bochaganj (Setabganj), Boda, Chalna (Dacope), Chandina, Chatkhil, Chatmohar, Chaudagram, Chhagalnaiya, Companiganj (Bashurhat) Noakhali, Daganbhuiyan, Damudya, Daudkandi, Debidwar, Dharmoirhat, Dhamrai, dhupchanchia, Dohar, Domar, Durgapur Rajshahi, Faridganj, Faridpur, Fulbari, Goalandaghat, Gopalpur (Lalpur), Gurudaspur, Hakimpur, Hatiya, Haziganj, Homna, Ishwardi, Kabirhat, Kachua Chandpur, Kasba, Khoksa, Kumarkhali, Laksam, Mahadebpur, Matlab Dakshin, Matlab Uttar (Sengarchar), Mongla, Nagarkanda, nandigram, Nangalkot, Naria, Nazipur (Patnitala), Panchbibi, Pangsha, Parbatipur, Parshuram, Pirganj Thakurgaon, Puthia, Raipur, Ramganj, Ramgati, Ranisankail, Rugganj & Kanchan, Saidpur, Sandwip, Santhia, Savar, Senbagh, Shahjadpur, Shahrasti, Shib Char, Singair, Singra, Sonagazi, Sonaimuri, Sonargaon, Sujaganar, Ullah Para, Zanjira
Upazilla_HQ	53	Araihazar, Atrai, Atwari, Badalgachhi, Balia Kandi, Baliadangi, Banchharampur, Biral, Brahman Para, Burichang, Char Bhadrason, Chauhali, Chirirbandar, Daulatpur Manikganj, Debiganj, Fulgazi, Gazaria, Ghior, Gosairhat, Haimchar, Haripur, Harirampur, Kaharole, Keraniganj, Khansama, Khetlal, Koyra, Lohajang, Madhukhali, Manda, Meghna, Monoharganj, Muradnagar, Nagarpur, Nawabganj Dhaka, Nawabganj Dinajpur, Niamatpur, Porsha, Raninagar, Sadarpur, Sapahar, Sarankhola, Saturia, Serajdikhan, Shibhalaya, Shyamnagar, Sreenagar, Sreepur Magura, Subarnachar, Tarash, Tentulia, Titash, Tongibari	
Score: 3	City Corporation HQ	5	Barisal Sadar (BCC), Chattogram City (CCC), Khan Jahan Ali (KCC), Khulna Sadar (KCC), Rajshahi Sadar (RCC)
	District_HQ	20	Bagerhat Sadar, Bandarban Sadar, Barguna Sadar, Bhola Sadar, Chuadanga Sadar, Cox's Bazar Sadar, Gopalganj Sadar, Jashore Sadar, Jhalokati Sadar, Jhenaidaha Sadar, Khagrachhari Sadar, Kushtia Sadar, Magura Sadar, Meherpur Sadar, Narail Sadar, Nawabganj Sadar, Patuakhali Sadar, Pirojpur Sadar, Rangamati Sadar, Satkhira Sadar
	Paurashava_HQ	69	Abhaynagar, Alamdanga, Amtali, Bagha & Arani, Baghai Chhari, Bagherpara, Bakerganj, Banaripara, Banshkhali, Bauphal, Benapole (Sharsha), Betagi, Burhanuddin, Chakaria, Chandanaish, Char Fasson, Chorghat, Chaugachha, Darshana (Damurhuda), Daulat Khan, Galachipa, Gangni, Gaurnadi, Godagari & Kakanhat, Harinakunda, Jhikargachha, Jibannagar, Kalapara & Kuakata, Kalaroa, Kalia, Kaliganj Jhenaidah, Kalkini, Keshabpur, Kesharhat (Mohanpur), Kotalipara, Kotchandpur, Lal Mohan, Lama, Lohagara Narail, Maheshkhali, Maheshpur, Manirampur, Mathbaria, Matiranga, Mehendiganj, Mirpur Kushtia, Mirsharai (Baraiarhat), Morrelganj Bagerhat, Muksubpur, Muladi, Nachole, Nalchity, Nesarabad (Swarupkati), Paikgachha, Patharghata, Patiya, Poba & Katakhal & Noahata, Rahanpur (Gomastapur), Ramgarh, Rangunia, Raozan, Satkania, Shaikupa, Shalikka, Shibganj Nawabganj, Sitakunda, Tanore & mundumala, Teknaf, Tungipara
	Upazilla_HQ	65	Agailjhara, Alfadanga, Alikadam, Anowara, Assasuni, Babuganj, Bamna, Barkal, Batiaghata, Belai Chhari, Bhandaria, Bholahat, Boalkhali, Chitalmari, Dashmina, Daulatpur Kushtia, Debhata, Dighalia, Dighinala, Dumki, Dumuria, Fakirhat, Fatikchhari, Hathazari, Hizla, Jurai Chhari, Kachua Bagerhat, Kaliganj Satkhira, Kanthalia, Kaptai, Kashiani, Kawkhali Pirojpur, Kawkhali Rangamati, Kutubdia, Lakshnichhari, Langadu, Lohagara Chittagong, Mahalchhari, Manikchhari, Manpura, Mirzaganj, Mohammadpur, Mollahat, Morrelganj (Zianagar) Pirojpur, Mujibnagar, Naikhongchhari, Naniarchar, Nazirpur, Panchhari, Pekua, Phultala, Rajapur, Rajsthal, Rajoir, Rampal, Ramu, Rowangchhari, Ruma, Rupsa, Tala, Tazumuddin, Terokhada, Thanchi, Ukhia, Wazirpur

Data Compiled by GIS Lab UDD, 2020

Index score of each growth center's Ecological sensitivity and suitability considering seismic character in alphabetical order

District	Growth center	Sensitivity	Suitability	
Bagerhat	Bagerhat Sadar	0.75	3	
	Chitalmari	0.75	3	
	Fakirhat	0.75	3	
	Kachua Bagerhat	0.75	3	
	Mollahat	0.75	3	
	Mongla	1.5	2.25	
	Morrelganj Bagerhat	0.75	3	
	Rampal	0.75	3	
	Sarankhola	1.5	2.25	
	Bandarban	Alikadam	0.75	3
Bandarban Sadar		0.75	3	
Lama		0.75	3	
Naikhongchhari		0.75	3	
Rowangchhari		0.75	3	
Ruma		0.75	3	
Thanchi		0.75	3	
Amtali		0.75	3	
Bamna		0.75	3	
Barguna Sadar		0.75	3	
Barguna	Betagi	0.75	3	
	Patharghata	0.75	3	
	Agailjhara	0.75	3	
	Babuganj	0.75	3	
	Bakerganj	0.75	3	
	Banaripara	0.75	3	
	Barisal Sadar (BCC)	0.75	3	
	Gaurnadi	0.75	3	
	Hizla	0.75	3	
	Mehendiganj	0.75	3	
Barisal	Muladi	0.75	3	
	Wazirpur	0.75	3	
	Bhola Sadar	0.75	3	
	Burhanuddin	0.75	3	
	Char Fasson	0.75	3	
	Daulat Khan	0.75	3	
	Lalmohan	0.75	3	
	Manpura	0.75	3	
	Tazumuddin	0.75	3	
	Adamdighi	1.5	2.25	
Bhola	Bogura Sadar	2.25	1.5	
	dhunat	2.25	1.5	
	dhupchanchia	1.5	2.25	
	gabtali	2.25	1.5	
	kahaloo	2.25	1.5	
	nandigram	1.5	2.25	
	sariakandi	2.25	1.5	
	Shajahanpur (Majhira) Bogra	2.25	1.5	
	sherpur	2.25	1.5	
	Shibganj Bogra	2.25	1.5	
Sonatola	2.25	1.5		
Brahmanbaria	Akhaura	2.25	1.5	
	Ashuganj	2.25	1.5	
	Banchharampur	1.5	2.25	
	Brahmanbaria Sadar	2.25	1.5	
	Kasba	1.5	2.25	
	Nabinagar	2.25	1.5	
	Nasirnagar	3	0.75	
	Sarail	2.25	1.5	
	Chandpur Sadar	1.5	2.25	
	Faridganj	1.5	2.25	
Chandpur	Haimchar	1.5	2.25	
	Haziganj	1.5	2.25	
	Kachua Chandpur	1.5	2.25	
	Matlab Dakshin	1.5	2.25	
	Matlab Uttar (Sengarchar)	1.5	2.25	
	Shahrasti	1.5	2.25	
	Chittagong	Anowara	0.75	3
		Banshkhali	0.75	3
		Boalkhali	0.75	3
		Chandanaish	0.75	3
Chattogram City (CCC)		0.75	3	
Fatikchhari		0.75	3	
Hathazari		0.75	3	
Lohagara Chittagong		0.75	3	
Mirsharai (Baraiarhat)		0.75	3	
Patiya		0.75	3	
Chuadanga	Rangunia	0.75	3	
	Raozan	0.75	3	
	Sandwip	1.5	2.25	
	Satkania	0.75	3	
	Sitakunda	0.75	3	
	Alamdanga	0.75	3	
	Chuadanga Sadar	0.75	3	
	Darshana (Damurhuda)	0.75	3	
	Jibannagar	0.75	3	
	Barura	1.5	2.25	
Comilla	Brahman Para	1.5	2.25	
	Burichang	1.5	2.25	
	Chandina	1.5	2.25	
	Chaudagram	1.5	2.25	
	Cumilla Sadar (Cumilla CC)	1.5	2.25	
	Daudkandi	1.5	2.25	
	Debidwar	1.5	2.25	
	Homna	1.5	2.25	
	Laksam	1.5	2.25	
	Meghna	1.5	2.25	
Cox's Bazar	Monoharganj	1.5	2.25	
	Muradnagar	1.5	2.25	
	Nangalkot	1.5	2.25	
	South Cumilla (Cumilla CC)	1.5	2.25	
	Titash	1.5	2.25	
	Chakaria	0.75	3	
	Cox's Bazar Sadar	0.75	3	
	Kutubdia	0.75	3	
	Maheshkhali	0.75	3	
	Pekua	0.75	3	
Ramu	0.75	3		
Teknaf	0.75	3		
Ukhia	0.75	3		
Dhaka	Dhaka City (DNCC & DSCC)	1.5	2.25	
	Dhamrai	1.5	2.25	
	Dohar	1.5	2.25	
	Keraniganj	1.5	2.25	
	Nawabganj Dhaka	1.5	2.25	
	Savar	1.5	2.25	
	Biral	1.5	2.25	
	Birampur	1.5	2.25	
	Birganj	1.5	2.25	
	Bochaganj (Setabganj)	1.5	2.25	
Dinajpur	Chirirbandar	1.5	2.25	
	Dinajpur Sadar	1.5	2.25	
	Fulbari	1.5	2.25	
	Ghoraghat	2.25	1.5	
	Hakimpur	1.5	2.25	
	Kaharole	1.5	2.25	
	Khansama	1.5	2.25	
	Faridpur	Nawabganj	1.5	2.25
		Dinajpur	1.5	2.25
		Parbatipur	1.5	2.25
Alfadanga		0.75	3	
Bhanga		1.5	2.25	
Boalmari		1.5	2.25	
Char Bhadrason		1.5	2.25	
Faridpur Sadar		1.5	2.25	
Madhukhali		1.5	2.25	
Nagarkanda		1.5	2.25	
Sadarpur	1.5	2.25		
Feni	Chhagalnaiya	1.5	2.25	
	Daganbhuiyan	1.5	2.25	
	Feni Sadar	1.5	2.25	
	Fulgazi	1.5	2.25	
	Parshuram	1.5	2.25	
	Sonagazi	1.5	2.25	
	Fulchhari	2.25	1.5	
	Gaibandha Sadar	2.25	1.5	
	Gobindaganj	2.25	1.5	
	Palashbari	2.25	1.5	
Sadullapur	2.25	1.5		
Gaibandha	Saghatta	2.25	1.5	
	Sundarganj	2.25	1.5	
	Gazipur Sadar (GCC & Tongi)	2.25	1.5	
	Kaliakair	2.25	1.5	
	Kaliganj Gazipur	2.25	1.5	
	Kapasia	2.25	1.5	
	Sreepur Gazipur	2.25	1.5	
	Gopalganj Sadar	0.75	3	
	Kashiani	0.75	3	
	Kotalipara	0.75	3	
Muksudpur	0.75	3		
Gazipur	Tungipara	0.75	3	
	Ajmiriganj	3	0.75	
	Bahubal	3	0.75	
	Baniachong	3	0.75	
	Chunarughat	3	0.75	
	Habiganj Sadar & Shayestaganj	3	0.75	
	Lakhai	3	0.75	
	Madhabpur	3	0.75	
	Nabiganj	3	0.75	
	Bakshiganj	3	0.75	
Gopalganj	Dewanganj	3	0.75	
	Islampur	2.25	1.5	
	Jamalpur Sadar	3	0.75	
	Madarganj	2.25	1.5	
	Melandaha	2.25	1.5	
	Sarishabari	2.25	1.5	
	Abhaynagar	0.75	3	
	Bagherpara	0.75	3	
	Benapole (Sharsha)	0.75	3	
	Chaugachha	0.75	3	
Jashore Sadar	0.75	3		
Jhikargachha	0.75	3		
Keshabpur	0.75	3		
Manirampur	0.75	3		
Habiganj	Jhalokati Sadar	0.75	3	
	Kanthatia	0.75	3	
	Nalchity	0.75	3	
	Rajapur	0.75	3	
	Harinakunda	0.75	3	
	Jhenaidaha Sadar	0.75	3	
	Kaliganj Jhenaidah	0.75	3	
	Kotchandpur	0.75	3	
	Maheshpur	0.75	3	
	Shaikupa	0.75	3	
Jamalpur	Bakshiganj	3	0.75	
	Dewanganj	3	0.75	
	Islampur	2.25	1.5	
	Jamalpur Sadar	3	0.75	
	Madarganj	2.25	1.5	
	Melandaha	2.25	1.5	
	Sarishabari	2.25	1.5	
	Jessore	Abhaynagar	0.75	3
		Bagherpara	0.75	3
		Benapole (Sharsha)	0.75	3
Chaugachha		0.75	3	
Jashore Sadar		0.75	3	
Jhikargachha		0.75	3	
Keshabpur		0.75	3	
Manirampur		0.75	3	
Jhalokati		Jhalokati Sadar	0.75	3
		Kanthatia	0.75	3
	Nalchity	0.75	3	
	Rajapur	0.75	3	
	Harinakunda	0.75	3	
	Jhenaidaha Sadar	0.75	3	
	Kaliganj Jhenaidah	0.75	3	
	Kotchandpur	0.75	3	
	Maheshpur	0.75	3	
	Shaikupa	0.75	3	

Ecological Variables : Seismic Zone

Index score of each growth center's Ecological sensitivity and suitability considering seismic character in alphabetical order

District	Growth center	Sensitivity	Suitability
Joypurhat	Akkelpur	1.5	2.25
	Joypurhat Sadar	1.5	2.25
	Kalai	2.25	1.5
	Khetlal	1.5	2.25
	Panchbibbi	1.5	2.25
Khagrachhari	Dighinala	0.75	3
	Khagrachhari Sadar	0.75	3
	Lakshmichhari	0.75	3
	Mahalchhari	0.75	3
	Manikchhari	0.75	3
	Matiranga	0.75	3
	Panchhari	0.75	3
	Ramgarh	0.75	3
Khulna	Batiaghata	0.75	3
	Chalna (Dacope)	1.5	2.25
	Dighalia	0.75	3
	Dumuria	0.75	3
	Khan Jahan Ali (KCC)	0.75	3
	Khulna Sadar (KCC)	0.75	3
	Koyra	1.5	2.25
	Paikgachha	0.75	3
	Phultala	0.75	3
	Rupsa	0.75	3
Kishoreganj	Terokhada	0.75	3
	Austagram	3	0.75
	Bajitpur	3	0.75
	Bhairab	2.25	1.5
	Hossainpur	3	0.75
	Itna	3	0.75
	Karimganj	3	0.75
	Katiadi	3	0.75
	Kishoreganj Sadar	3	0.75
	Kuliar Char	2.25	1.5
	Mithamain	3	0.75
	Nikli	3	0.75
	Pakundia	3	0.75
	Tarail	3	0.75
	Kurigram	Bhurungamari	3
Char Rajibpur		3	0.75
Chilmari		3	0.75
Kurigram Sadar		3	0.75
Nageshwari		3	0.75
Phulbari		2.25	1.5
Rajarhat		2.25	1.5
Raumari		3	0.75
Ulipur		3	0.75
Kushtia		Bheramara	1.5
	Daulatpur Kushtia	0.75	3
	Khoksa	1.5	2.25
	Kumarkhali	1.5	2.25
Lakshmipur	Kushtia Sadar	0.75	3
	Mirpur Kushtia	0.75	3
	Lakshmipur Sadar	1.5	2.25
Lalmonirhat	Raipur	1.5	2.25
	Ramganj	1.5	2.25
	Ramgati	1.5	2.25
	Aditmari	2.25	1.5
Madaripur	Hatibandha	2.25	1.5
	Kaliganj Lalmonirhat	2.25	1.5
	Lalmonirhat Sadar	2.25	1.5
	Patgram	2.25	1.5
Magura	Kalkini	0.75	3
	Madaripur Sadar	1.5	2.25
	Rajoir	0.75	3
	Shib Char	1.5	2.25
Magura	Magura Sadar	0.75	3
	Mohammadpur	0.75	3
	Shalikha	0.75	3
Sreepur Magura	1.5	2.25	

District	Growth center	Sensitivity	Suitability	
Manikganj	Daulatpur Manikganj	1.5	2.25	
	Ghior	1.5	2.25	
	Harirampur	1.5	2.25	
	Manikganj Sadar	1.5	2.25	
	Saturia	1.5	2.25	
Maulvibazar	Shibalaya	1.5	2.25	
	Singair	1.5	2.25	
	Barlekha	3	0.75	
	Juri	3	0.75	
	Kamalganj	3	0.75	
	Kulaura	3	0.75	
	Maulvi Bazar Sadar	3	0.75	
	Rajnagar	3	0.75	
Meherpur	Sreemangal	3	0.75	
	Gangni	0.75	3	
	Meherpur Sadar	0.75	3	
Munshiganj	Mujibnagar	0.75	3	
	Gazaria	1.5	2.25	
	Lohajang	1.5	2.25	
	Munshiganj Sadar & Mirkadim	1.5	2.25	
	Serajdikhan	1.5	2.25	
Mymensingh	Sreenagar	1.5	2.25	
	Tongibari	1.5	2.25	
	Bhaluka	2.25	1.5	
	Dhobaura	3	0.75	
	Fulbaria	3	0.75	
	Gaffargaon	3	0.75	
	Gauripur	3	0.75	
	Haluaghat	3	0.75	
	Ishwarganj	3	0.75	
	Mukttagachha	3	0.75	
	Mymensingh Sadar (MCC)	3	0.75	
	Nandail	3	0.75	
	Phulpur	3	0.75	
	Trishal	3	0.75	
	Naogaon	Atrai	1.5	2.25
Badalgachhi		1.5	2.25	
Dhamoirhat		1.5	2.25	
Mahadebpur		1.5	2.25	
Manda		1.5	2.25	
Naogaon Sadar		1.5	2.25	
Nazipur (Patnitala)		1.5	2.25	
Niamatpur		1.5	2.25	
Porsha		1.5	2.25	
Raninagar		1.5	2.25	
Sapahar		1.5	2.25	
Narail		Katia	0.75	3
		Lohagara Narail	0.75	3
		Narail Sadar	0.75	3
Narayanganj		Araihazar	1.5	2.25
	Bandar (NCC) & Tarabo	1.5	2.25	
	Narayanganj Sadar (NCC) & Shiddhirganj	1.5	2.25	
	Dumki	0.75	3	
	Rupganj & Kanchan	1.5	2.25	
	Sonargaon	1.5	2.25	
	Belabo	2.25	1.5	
	Ghorashat (Palash)	2.25	1.5	
Manohardi	2.25	1.5		
Narsingdi	Narsingdi Sadar & Madhabdi	1.5	2.25	
	Raypura	2.25	1.5	
	Shibpur	2.25	1.5	

District	Growth center	Sensitivity	Suitability
Natore	Bagati Para	1.5	2.25
	Baraigram & Banpara	1.5	2.25
	Gopalpur (Lalpur)	1.5	2.25
	Gurudaspur	1.5	2.25
	Natore Sadar & Naldanga	1.5	2.25
Nawabganj	Singra	1.5	2.25
	Bholahat	0.75	3
	Nachole	0.75	3
	Nawabganj Sadar	0.75	3
	Rahanpur (Gomastapur)	0.75	3
	Shibganj Nawabganj	0.75	3
	Atpara	3	0.75
	Barhatta	3	0.75
Netrakona	Durgapur Netrakona	3	0.75
	Kalmakanda	3	0.75
	Kendua	3	0.75
	Khaliajuri	3	0.75
	Madan	3	0.75
	Mohanganj	3	0.75
	Netrokona Sadar	3	0.75
	Purbadhala	3	0.75
Nilphamari	Dimla	2.25	1.5
	Domar	1.5	2.25
	Jaldhaka	2.25	1.5
	Kishoreganj	2.25	1.5
	Nilphamari Sadar	1.5	2.25
Noakhali	Saidpur	1.5	2.25
	Begumganj (Chowmuhan)	1.5	2.25
	Chatkhil	1.5	2.25
	Companiganj (Bashurhat) Noakhali	1.5	2.25
	Hatiya	1.5	2.25
	Kabirhat	1.5	2.25
	Noakhali Sadar	1.5	2.25
	Senbagh	1.5	2.25
Sonaimuri	1.5	2.25	
Pabna	Subarnachar	1.5	2.25
	Atgharia	1.5	2.25
	Bera	1.5	2.25
	Bhangura	1.5	2.25
	Chatmohar	1.5	2.25
	Faridpur	1.5	2.25
	Ishwardi	1.5	2.25
	Pabna Sadar	1.5	2.25
	Santhia	1.5	2.25
	Sujanagar	1.5	2.25
	Atwari	1.5	2.25
	Boda	1.5	2.25
	Debiganj	1.5	2.25
	Panchagarh Sadar	1.5	2.25
	Tentulia	1.5	2.25
Bauphal	0.75	3	
Patuakhali	Narayanganj Sadar (NCC) & Shiddhirganj	0.75	3
	Dumki	0.75	3
	Galachipa	0.75	3
	Kalapara & Kuakata	0.75	3
	Mirzaganj	0.75	3
	Patuakhali Sadar	0.75	3
	Bhandaria	0.75	3
	Kawkhali Pirojpur	0.75	3
Mathbaria	0.75	3	
Pirojpur	Morreiganj (Zianagar) Pirojpur	0.75	3
	Nazirpur	0.75	3
	Nesarabad (Swarupkati)	0.75	3
	Pirojpur Sadar	0.75	3

Index score of each growth center's Ecological sensitivity and suitability considering seismic character in alphabetical order

District	Growth center	Sensitivity	Suitability	
Rajbari	Balia Kandi	1.5	2.25	
	Goalandaghat	1.5	2.25	
	Pangsha	1.5	2.25	
	Rajbari Sadar	1.5	2.25	
	Bagha & Arani	0.75	3	
Rajshahi	Bhabanigonj (Baghmara) & Tahirpur	1.5	2.25	
	Charghat	0.75	3	
	Durgapur Rajshahi	1.5	2.25	
	Godagari & Kakanhat	0.75	3	
	Kesharhat (Mohanpur)	0.75	3	
	Poba & Katakhal & Noahata	0.75	3	
	Puthia	1.5	2.25	
	Rajshahi Sadar (RCC)	0.75	3	
	Tanore & mundumala	0.75	3	
	Rangamati	Baghai Chhari	0.75	3
		Barkal	0.75	3
		Belai Chhari	0.75	3
		Jurai Chhari	0.75	3
		Kaptai	0.75	3
		Kawkhali Rangamati	0.75	3
Langadu		0.75	3	
Naniarchar		0.75	3	
Rangpur	Rajasthali	0.75	3	
	Rangamati Sadar	0.75	3	
	Badarganj	2.25	1.5	
	Gangachara	2.25	1.5	
	Haragacha (Kaunia)	2.25	1.5	
	Mitha Pukur	2.25	1.5	
	Pirgachha	2.25	1.5	
	Pirganj Rangpur	2.25	1.5	
	Rangpur Sadar (Rangpur CC)	2.25	1.5	
	Taraganj	2.25	1.5	

District	Growth center	Sensitivity	Suitability
Satkhira	Assasuni	0.75	3
	Debhata	0.75	3
	Kalaroa	0.75	3
	Kaliganj Satkhira	0.75	3
	Satkhira Sadar	0.75	3
Shariatpur	Shyamnagar	1.5	2.25
	Tala	0.75	3
	Bhedarganj	1.5	2.25
	Damudya	1.5	2.25
	Gosairhat	1.5	2.25
	Godagari & Kakanhat	1.5	2.25
	Shariatpur Sadar	1.5	2.25
	Zanjira	1.5	2.25
Sherpur	Jhenaigati	3	0.75
	Nakla	3	0.75
	Nalitabari	3	0.75
	Sherpur Sadar	3	0.75
	Sreebardi	3	0.75
Sirajganj	Belkuchi	2.25	1.5
	Chauhali	1.5	2.25
	Kamarkhanda	2.25	1.5
	Kazipur	2.25	1.5
	Royganj	2.25	1.5
	Shahjadpur	1.5	2.25
	Sirajganj Sadar	2.25	1.5
	Tarash	1.5	2.25
Sunamganj	Ullah Para	1.5	2.25
	Bishwambarpur	3	0.75
	Chhatak	3	0.75
	Derai	3	0.75
	Dharampasha	3	0.75
	Dowarabazar	3	0.75
	Jagannathpur	3	0.75
	Jamalganj	3	0.75
Pirgachha	3	0.75	
Sunamganj	South Sunamganj	3	0.75
	Sulla	3	0.75
	Sunamganj Sadar	3	0.75
	Tahirpur	3	0.75

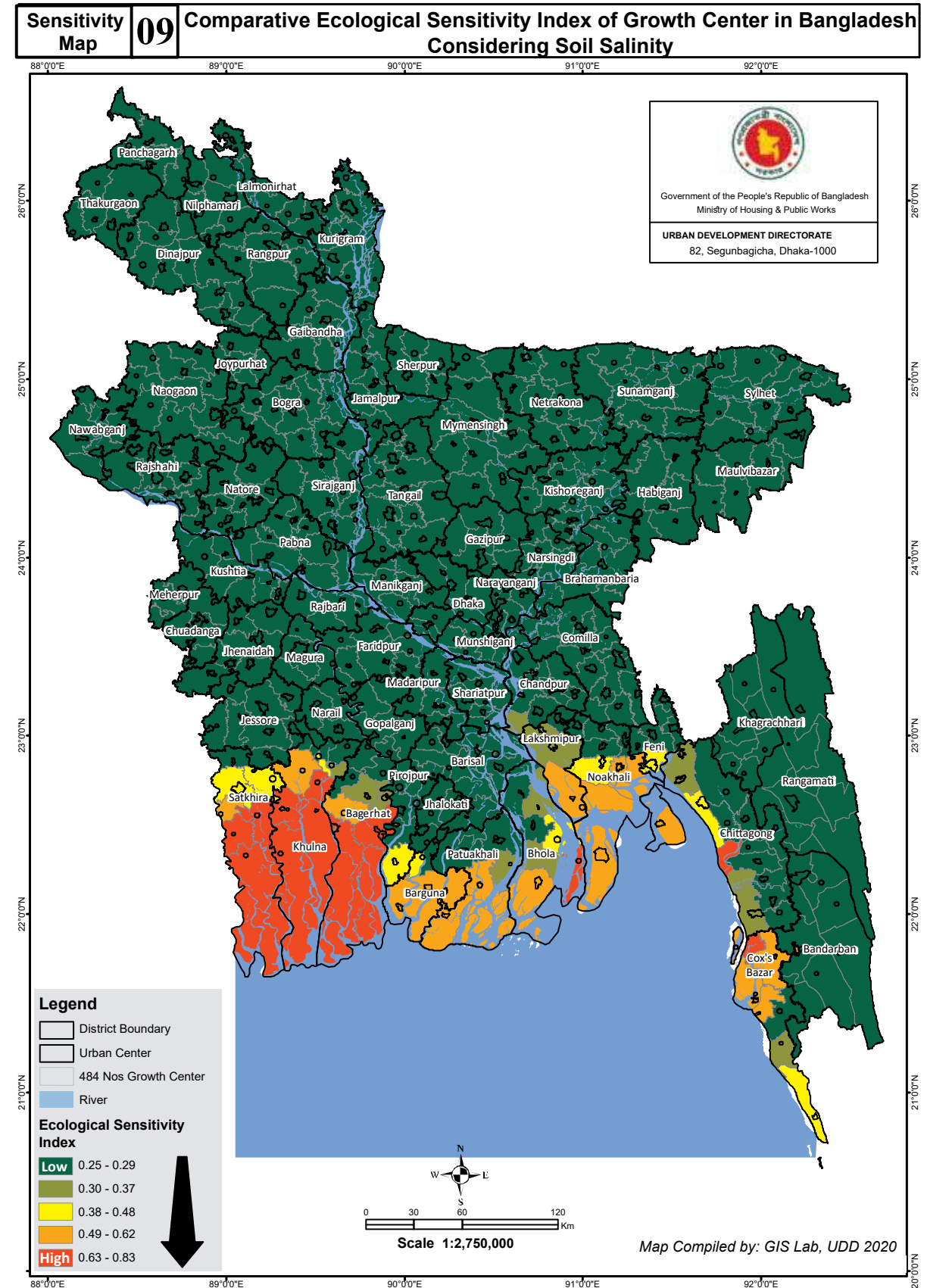
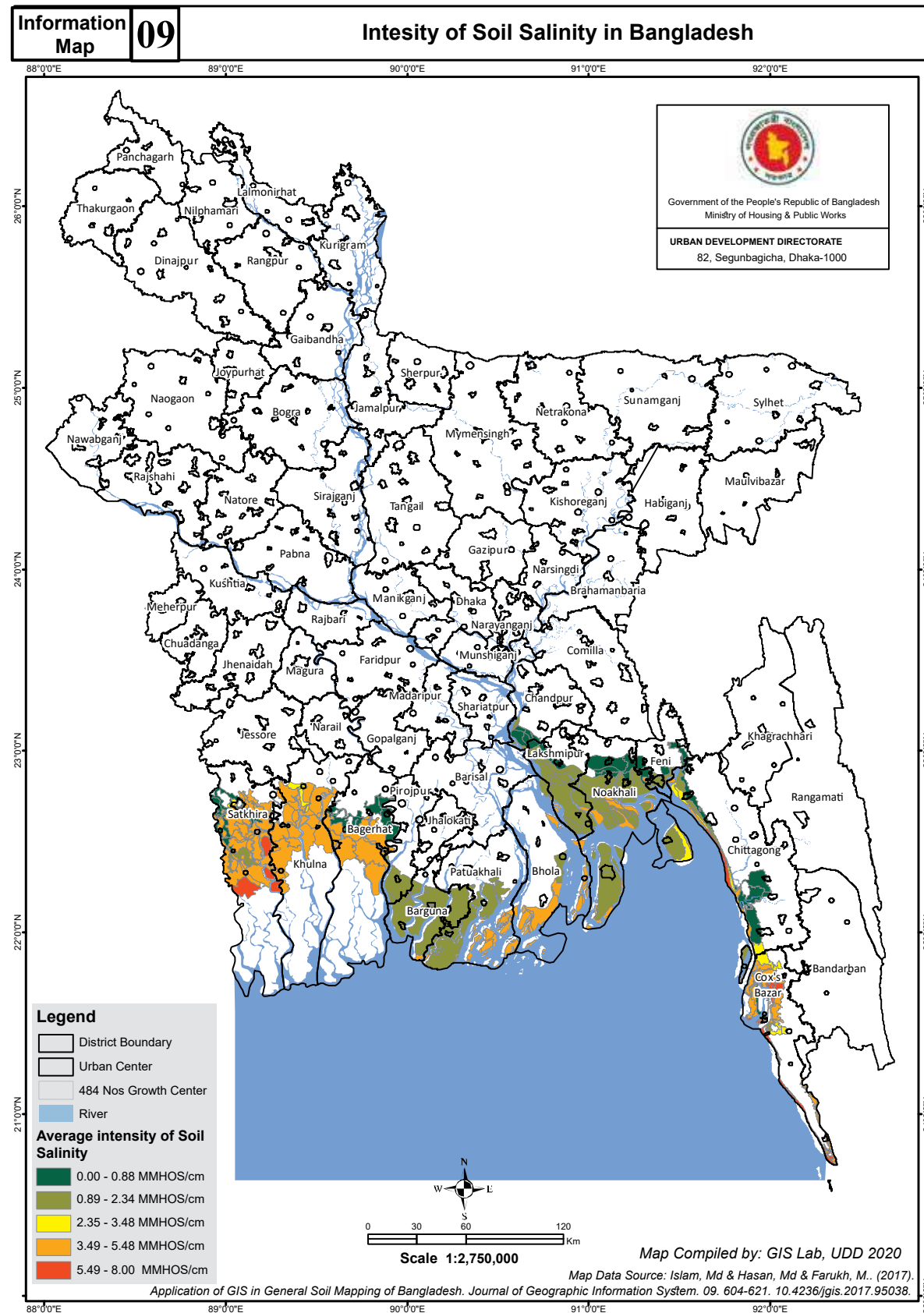
District	Growth center	Sensitivity	Suitability
Sylhet	Balaganj	3	0.75
	Beanibazar	3	0.75
	Bishwanath	3	0.75
	Companiganj Sylhet	3	0.75
	Fenchuganj	3	0.75
	Golabganj	3	0.75
	Gowainghat	3	0.75
	Jaintiapur	3	0.75
	Kanaighat	3	0.75
	South Surma (Sylhet CC)	3	0.75
Tangail	Sylhet Sadar (Sylhet CC)	3	0.75
	Zakiganj	3	0.75
	Basail	2.25	1.5
	Bhuapur	2.25	1.5
	Delduar	2.25	1.5
	Dhanbari	3	0.75
	Ghatail	2.25	1.5
	Gopalpur	2.25	1.5
	Kalihati	2.25	1.5
	Madhupur	3	0.75
Thakurgaon	Mirzapur	2.25	1.5
	Nagarpur	1.5	2.25
	Sakhipur	2.25	1.5
	Tangail Sadar	2.25	1.5
	Baliadangi	1.5	2.25
	Haripur	1.5	2.25
	Pirganj Thakurgaon	1.5	2.25
	Ranisankail	1.5	2.25
Thakurgaon Sadar	1.5	2.25	

Data Compiled by GIS Lab UDD, 2020

Seismic Zone

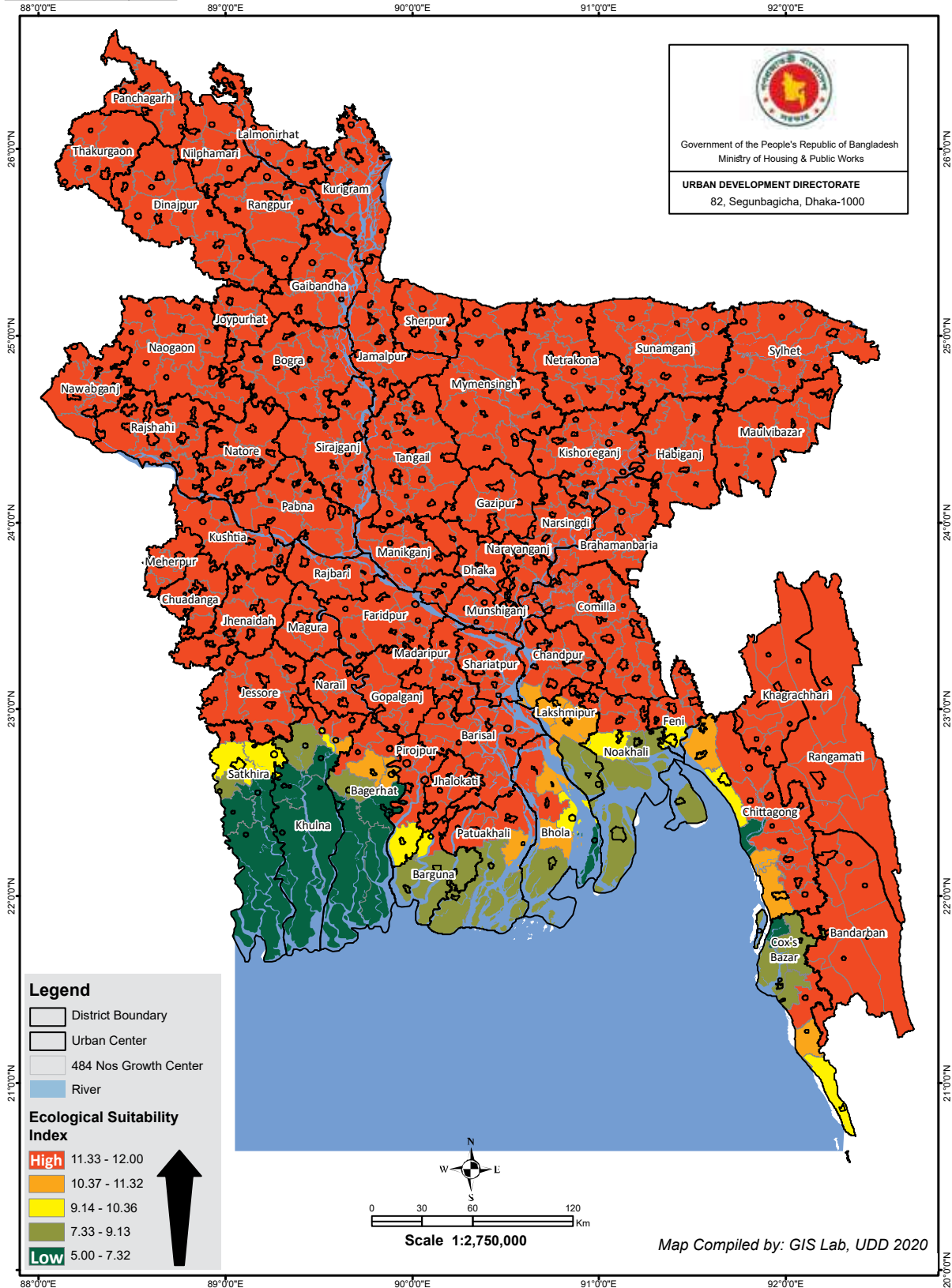
Bangladesh is one of the most densely populated countries on the earth. The country has experienced rapid infrastructure development and high urbanization after the Liberation War of 1971. Any major earthquake around its subsurface fault line can cause tremendous humanitarian crisis beyond the nation's capacity. Most of the fault lines within the border of the country are located beneath the hilly areas of Chattogram and Sylhet. Inhabitant of settlements close to these areas especially at urban establishment are potential victim to earthquake. The Draft Bangladesh National Building Code (BNBC), 2012 has divided the country into four seismic zones with different levels of Maximum Considered Earthquake (MCE) motion. MCE correspond of having a 2% probability to exceed the maximum considered Peak Ground Acceleration (PGA) within a period of 50 years.

Ecological Variables : Soil Salinity



Ecological Variables : Soil Salinity

Suitability Map 09 Comparative Ecological Suitability Index of Growth Center in Bangladesh Considering Soil Salinity



Index score and summary table of growth center ecological suitability considering soil salinity

Suitability Chart No 09 (a): Growth Center Ecological Suitability Statistics Considering Soil Salinity

Altitude and Ecological Suitability Index Score	Administrative Level	Growth Center (Nos)	Total Population 2011	(%)	Urban Population 2011	(%)	Area (SqKM)	(%)
Score: 5.00 - 7.32	City Corporation HQ	1	3310027	2.31	3310027	9.79	171.11	0.12
	Paurashava_HQ	4	831463	0.58	97172	0.29	3298.73	2.27
	Upazilla_HQ	7	1319834	0.92	102284	0.30	5673.04	3.90
Score: 7.33 - 9.13	District_HQ	2	720425	0.50	255757	0.76	604.35	0.42
	Paurashava_HQ	12	3725791	2.60	501163	1.48	7328.92	5.04
	Upazilla_HQ	6	1275680	0.89	73331	0.22	1906.76	1.31
Score: 9.14 - 10.36	City Corporation HQ	1	575116	0.40	562990	1.66	44.58	0.03
	District_HQ	2	986826	0.69	244164	0.72	735.13	0.51
	Paurashava_HQ	4	1177609	0.82	146248	0.43	1223.38	0.84
	Upazilla_HQ	3	506324	0.35	38213	0.11	813.22	0.56
Score: 10.37 - 11.32	Upazilla_HQ	53	11526209	8.04	554126	1.64	15758.04733	10.83
	District_HQ	2	950814	0.66	135359	0.40	740.96	0.51
	Paurashava_HQ	5	1557494	1.09	180262	0.53	1878.98	1.29
Score: 11.33 - 12.00	Upazilla_HQ	6	975894	0.68	70355	0.21	1104.55	0.76
	CAP	1	8747042	6.10	8747042	25.86	305.84	0.21
	City Corporation HQ	12	7968044	5.56	3753646	11.10	2595.17	1.78
	District_HQ	47	18315383	12.78	5051204	14.94	15608.98	10.72
Score: 11.33 - 12.00	Paurashava_HQ	213	60497097	42.21	8413991	24.88	60189.20	41.35
	Upazilla_HQ	156	29880871	20.85	2136016	6.32	41324.42	28.39
	Grand Total	484	143321734	100.00	33819224	100.00	145547.31	100.00

Data Compiled by GIS Lab UDD, 2020

Suitability Chart No 09 (b): Name of Growth Center and Ecological Suitability Considering Soil Salinity

Soil Salinity and Ecological Suitability Index Score	Administrative Level	Growth Center (Nos)	Name of Growth Center
Score: 5.00 - 7.32	City Corporation HQ	1	Chattogram City (CCC)
	Paurashava_HQ	4	Chalna (Dacope), Mongla, Morrelganj Bagerhat, Paikgachha
	Upazilla_HQ	7	Assasuni, Batiaghata, Koyra, Manpura, Pekua, Sarankhola, Shyamnagar
Score: 7.33 - 9.13	District_HQ	2	Barguna Sadar, Cox's Bazar Sadar
	Paurashava_HQ	12	Amtali, Chakaria, Char Fasson, Companiganj (Bashurhat) Noakhali, Galachipa, Hatiya, Kabirhat, Kalapara & Kuakata, Maheshkhali, Patharghata, Ramgati, Sandwip
	Upazilla_HQ	6	Debhata, Dumuria, Kaliganj Satkhira, Kutubdia, Rampal, Subarnachar
Score: 9.14 - 10.36	City Corporation HQ	1	Khulna Sadar (KCC)
	District_HQ	2	Noakhali Sadar, Satkhira Sadar
	Paurashava_HQ	4	Mathbaria, Sitakunda, Sonagazi, Teknaf
Score: 10.37 - 11.32	Upazilla_HQ	3	Bamna, Tala, Tazumuddin
	District_HQ	2	Bagerhat Sadar, Lakshmipur Sadar
	Paurashava_HQ	5	Banshkhali, Daulat Khan, Lalmohan, Mirsharai (Baraiarhat), Raipur
Score: 11.33 - 12.00	Upazilla_HQ	6	Anowara, Dashmina, Haimchar, Kachua Bagerhat, Rupsa, Ukhia
	CAP	1	Dhaka City (DNCC & DSCC)
Score: 11.33 - 12.00	City Corporation HQ	12	Bandar (NCC) & Tarabo, Barisal Sadar (BCC), Cumilla Sadar (Cumilla CC), Gazipur Sadar (GCC & Tongi), Khan Jahan Ali (KCC), Mymensingh Sadar (MCC), Narayanganj Sadar (NCC) & Shiddhirganj, Rajshahi Sadar (RCC), Rangpur Sadar (Rangpur CC), South Cumilla (Cumilla CC), South Surma (Sylhet CC), Sylhet Sadar (Sylhet CC)

Ecological Variables : Soil Salinity

Suitability Chart No 09 (b): Name of Growth Center and Ecological Suitability Considering Soil Salinity			
Soil Salinity and Ecological Suitability Index Score	Administrative Level	Growth Center (Nos)	Name of Growth Center
12	District_HQ	47	Bandarban Sadar, Bhola Sadar, Bogura Sadar, Brahmanbaria Sadar, Chandpur Sadar, Chuadanga Sadar, Dinajpur Sadar, Faridpur Sadar, Feni Sadar, Gaibandha Sadar, Gopalganj Sadar, Habiganj Sadar & Shayestaganj, Jamalpur Sadar, Jashore Sadar, Jhalokati Sadar, Jhenaidaha Sadar, Joypurhat Sadar, Khagrachhari Sadar, Kishoreganj Sadar, Kurigram Sadar, Kushtia Sadar, Lalmonirhat Sadar, Madaripur Sadar, Magura Sadar, Manikganj Sadar, Maulvi Bazar Sadar, Meherpur Sadar, Munshiganj Sadar & Mirkadim, Naogaon Sadar, Narail Sadar, Narsingdi Sadar & Madhabdi, Natore Sadar & Naldanga, Nawabganj Sadar, Netrokona Sadar, Nilphamari Sadar, Pabna Sadar, Panchagarh Sadar, Patuakhali Sadar, Pirojpur Sadar, Rajbari Sadar, Rangamati Sadar, Shariatpur Sadar, Sherpur Sadar, Sirajganj Sadar, Sunamganj Sadar, Tangail Sadar, Thakurgaon Sadar
13	Paurashava_HQ	213	Abhaynagar, Adamdighi, Ajmiriganj, Akhaura, Akkelpur, Alamdanga, Atgharia, Badarganj, Bagati Para, Bagha & Arani, Baghai Chhari, Bagherpara, Bajitpur, Bakerganj, Banaripara, Baraigram & Banpara, Barlekha, Barura, Bauphal, Beanibazar, Begumganj (Chowmuhani), Belkuchi, Benapole (Sharsha), Bera, Betagi, Bhabaniganj (Baghmara) & Tahirpur, Bhairab, Bhaluka, Bhanga, Bhanga, Bhedarganj, Bheramara, Bhuapur, Birampur, Birganj, Boalmari, Bochaganj (Setabganj), Boda, Burhanuddin, Chandanaish, Chandina, Chorghat, Chatkhil, Chatmohar, Chauddagang, Chaugachha, Chhagalnaiya, Chhatak, Chunarughat, Daganbhuiyan, Damudya, Darshana (Damurhuda), Daudkandi, Debidwar, Derai, Dewanganj, Dhamoirhat, Dhamrai, Dhanbari, dhunat, dhupchanchia, Dohar, Domar, Durgapur Netrakona, Durgapur Rajshahi, Faridganj, Faridpur, Fulbari, Fulbaria, gabtali, Gaffargaon, Gangni, Gauripur, Gaurinadi, Ghatail, Ghoraghat, Ghorashal (Palash), Goalandaganj, Gobindaganj, Godagari & Kakanhat, Golabganj, Gopalpur, Gopalpur (Lalpur), Gurudaspur, Hakimpur, Haragacha (Kaunia), Harinakunda, Haziganj, Homna, Hossainpur, Ishwardi, Ishwarganj, Islampur, Jagannathpur, Jaldhaka, Jhikargachha, Jibannagar, Kachua Chandpur, kahaloo, Kalai, Kalaroa, Kalia, Kaliakair, Kaliganj Gazipur, Kaliganj Jhenaidah, Kalihati, Kalkini, Kamalganj, Kanaighat, Karimganj, Kasba, Katiadi, Kazipur, Kendua, Keshabpur, Kesharhat (Mohanpur), Khoksa, Kotalipara, Kotchandpur, Kulaura, Kuliari Char, Kumarkhali, Laksam, Lama, Lohagara Narail, Madan, Madarganj, Madhabpur, Madhupur, Mahadebpur, Maheshpur, Manirampur, Manohardi, Matiranga, Matlab Dakshin, Matlab Uttar (Sengarchar), Mehendiganj, Melandaha, Mirpur Kushtia, Mirzapur, Mohanganj, Muksudpur, Muktagachha, Muladi, Nabiganj, Nabinagar, Nachole, Nagarkanda, Nageshwari, Nakla, Nalchity, Nalitabari, Nandail, nandigram, Nangalkot, Naria, Nazipur (Patnitala), Nesarabad (Swarupkati), Pakundia, Panchbibi, Pangsha, Parbatipur, Parshuram, Patgram, Patiya, Phulpur, Pirganj Thakurgaon, Poba & Katakhalai & Noahata, Purbadhala, Puthia, Rahanpur (Gomastapur), Ramganj, Ramgarh, Rangunia, Ranisankail, Razoan, Raypura, Royganj, Rugganj & Kanchan, Saidpur, Sakhipur, Santhia, sariakandi, Sarishabari, Satkania, Savar, Senbagh, Shahjadpur, Shahrasti, Shaikupa, Shalikka, sherpur, Shib Char, Shibganj Bogra, Shibganj Nawabganj, Shibpur, Singair, Singra, Sonaimuri, Sonargaon, Sonatola, Sreebardi, Sreemangal, Sreepur Gazipur, Sujanagar, Sundarganj, Tanore & mundumala, Trishal, Tungipara, Ulipur, Ullah Para, Zakiganj, Zanjira
14	Upazilla_HQ	156	Aditmari, Agailjhara, Alfadanga, Alikadam, Araihaazar, Ashuganj, Atpara, Atrai, Atwari, Austagram, Babuganj, Badalgachhi, Bahubal, Bakshiganj, Balaganj, Batia Kandi, Baliadangi, Banchharampur, Baniachong, Barhatta, Barkal, Basail, Belabo, Belai Chhari, Bhandaria, Bholahat, Bhurungamari, Biral, Bishwambarpur, Bishwanath, Boalkhali, Brahman Para, Burichang, Char Bhadrason, Char Rajibpur, Chauhali, Chilmari, Chirirbandar, Chitalmari, Companiganj Sylhet, Daulatpur Kushtia, Daulatpur Manikganj, Debiganj, Delduar, Dharampasha, Dhobaura, Dighalia, Dighinala, Dimla, Dowarabazar, Dumki, Fakirhat, Fatikchhari, Fenchuganj, Fulchhari, Fulgazi, Gangachara, Gazaria, Ghior, Gosairhat, Gowainghat, Haluaghat, Haripur, Harirampur, Hathazari, Hatibandha, Hizla, Itna, Jaintiapur, Jamalganj, Jhenagati, Jurai Chhari, Juri, Kaharole, Kaliganj Lalmonirhat, Kalmakanda, Kamarkhanda, Kanthalia, Kapasia, Kaptai, Kashiani, Kawkhali Pirojpur, Kawkhali Rangamati, Keraniganj, Khaliajuri, Khansama, Khetlat, Kishoreganj, Lakhai, Lakshnichhari, Langadu, Lohagara Chittagong, Lohajang, Madhukhali, Mahalchhari, Manda, Manikchhari, Meghna, Mirzaganj, Mitha Pukur, Mithamain, Mohammadpur, Mollahat, Monoharganj, Morrelganj (Zianagar) Pirojpur, Mujibnagar, Muradnagar, Nagarpur, Naikhongchhari, Naniarchar, Nasirnagar, Nawabganj Dhaka, Nawabganj Dinajpur, Nazirpur, Niamatpur, Nikli, Palashbari, Panchhari, Phulbari, Phultala, Pargachha, Pirganj Rangpur, Porsha, Rajapur, Rajarhat, Rajasthali, Rajnagar, Rajoir, Ramu, Raninagar, Raumari, Rowangchhari, Ruma, Sadarpur, Sadullapur, Saghatta, Sapahar, Sarail, Sauria, Serajdikhan, Shajahanpur (Majhira) Bogra, Shibalaya, South Sunamganj, Sreenagar, Sreepur Magura, Sullia, Tahirpur, Taraganj, Tarail, Tarash, Tentulia, Terokhada, Thanchi, Titash, Tongibari, Wazirpur

Data Compiled by GIS Lab UDD, 2020

Index score of each growth center's Ecological sensitivity and suitability considering soil salinity in alphabetical order

District	Growth center	Sensitivity	Suitability	District	Growth center	Sensitivity	Suitability	District	Growth center	Sensitivity	Suitability				
Bagerhat	Bagerhat Sadar	3.68	11.32	Chittagong	Anowara	4.48	10.52	Faridpur	Nawabganj	3.00	12.00				
	Chitalmari	3.02	11.98		Banshkhali	4.46	10.54		Dinajpur	Dinajpur	3.00	12.00			
	Fakirhat	3.14	11.86		Boalkhali	3.00	12.00		Parbatipur	Parbatipur	3.00	12.00			
	Kachua Bagerhat	3.68	11.32		Chandanaish	3.05	11.95		Feni	Alfadanga	3.00	12.00			
	Mollahat	3.00	12.00		Chattogram City (CCC)	8.59	6.45			Bhanga	3.00	12.00			
	Mongla	9.00	6.00		Fatikchhari	3.00	12.00			Boalmari	3.00	12.00			
	Morrelganj Bagerhat	7.90	7.10		Hathazari	3.00	12.00			Char Bhadrason	3.00	12.00			
	Rampal	6.35	8.65		Lohagara	3.00	12.00			Faridpur Sadar	3.00	12.00			
	Sarankhola	9.00	6.00		Chittagong	3.00	12.00			Madhukhali	3.00	12.00			
	Bandarban	Atikadam	3.00		12.00	Chuadanga	Sandwip		6.17	8.74	Gaibandha	Nagarkanda	3.00	12.00	
Bandarban Sadar		3.00	12.00	Satkania	3.00		12.00	Sadarpur	3.00	12.00					
Lama		3.00	12.00	Sitakunda	5.24		9.77	Feni	Chhagalnaiya	3.16		11.84			
Naikhongchhari		3.00	12.00	Alamdanga	Alamdanga		3.00		12.00	Daganbhuiyan		3.17	11.83		
Rowangchhari		3.00	12.00		Chuadanga Sadar		3.00		12.00	Feni Sadar		3.01	11.99		
Ruma		3.00	12.00	Damurhuda	Darshana (Damurhuda)		3.00		12.00	Fulgazi		3.00	12.00		
Thanchi		3.00	12.00		Jibannagar		3.00		12.00	Parshuram	3.00	12.00			
Barguna		Amtali	6.00	9.00	Comilla		Sundarganj		3.00	12.00	Gazipur	Sonagazi	4.67	10.33	
		Bamna	4.64	10.36			Barura	3.00	12.00	Gazipur		Fulchhari	3.00	12.00	
		Barguna Sadar	6.17	8.83			Brahman Para	3.00	12.00			Gaibandha Sadar	3.00	12.00	
	Betagi	3.29	11.71	Burichang		3.00	12.00	Gobindaganj	3.00			12.00			
	Patharghata	6.08	8.92	Chandina		3.00	12.00	Palashbari	3.00			12.00			
	Barisal	Agailjhara	3.00	12.00		Chauddagram	3.00	12.00	Sadullapur			3.00	12.00		
		Babuganj	3.00	12.00		Cumilla Sadar (Cumilla CC)	3.00	12.00	Saghatta		3.00	12.00			
		Bakerganj	3.00	12.00		Daudkandi	3.00	12.00	Sundarganj	3.00	12.00				
		Banaripara	3.00	12.00		Debidwar	3.00	12.00	Gazipur	Gazipur Sadar (GCC & Tongi)	3.00	12.00			
		Barisal Sadar (BCC)	3.00	12.00		Homna	3.00	12.00		Katiakair	3.00	12.00			
Gaurinadi		3.00	12.00	Laksam	3.00	12.00	Kaliganj Gazipur	3.00		12.00					
Hizla		3.03	11.97	Meghna	3.00	12.00	Kapasia	3.00		12.00					
Bhola		Mehendiganj	3.00	12.00	Monoharganj	3.00	12.00	Sreepur Gazipur		3.00	12.00				
		Muladi	3.00	12.00	Muradnagar	3.00	12.00	Gopalganj		Gopalganj Sadar	3.00	12.00			
		Wazirpur	3.00	12.00	Nangalkot	3.00	12.00		Kashiani	3.00	12.00				
	Bhola Sadar	3.10	11.90	South Cumilla (Cumilla CC)	3.00	12.00	Kotalipara		3.00	12.00					
	Burhanuddin	3.00	12.00	Titash	3.00	12.00	Muksudpur		3.00	12.00					
	Char Fasson	6.95	8.05	Cox's Bazar	Chakararia	5.84	9.13		Tungipara	3.00	12.00				
	Daulat Khan	4.40	10.60		Dhaka	Cox's Bazar Sadar	6.16		8.80	Habiganj	Ajmiriganj	3.00	12.00		
	Lalmohan	4.36	10.64			Kutubdia	Kutubdia	6.19	8.81		Bahubal	3.00	12.00		
	Manpura	8.83	6.17				Maheshkhali	Maheshkhali	6.89		8.09	Baniachong	3.00	12.00	
	Tazumuddin	4.66	10.34			Pekua		Pekua	8.23		6.71	Chunarughat	3.00	12.00	
Bogra	Adamdighi	3.00	12.00				Ramu	Ramu	3.47		11.53	Habiganj Sadar & Shayestaganj	3.00	12.00	
	Bogura Sadar	3.00	12.00			Teknaf		Teknaf	5.73		9.27	Lakhai	3.00	12.00	
	dhunat	3.00	12.00				Ukhia	Ukhia	3.97	11.03	Madhabpur	3.00	12.00		
	dhupchanchia	3.00	12.00			Dinajpur		Dhaka City (DNCC & DSCC)	Dhaka City (DNCC & DSCC)	3.00	12.00	Nabiganj	3.00	12.00	
	gabtali	3.00	12.00				Dhamrai		Dhamrai	3.00	12.00	Bakshiganj	3.00	12.00	
	kahaloo	3.00	12.00	Dohar					Dohar	3.00	12.00	Dewanganj	3.00	12.00	
	nandigram	3.00	12.00		Keraniganj		Keraniganj		3.00	12.00	Islampur	3.00	12.00		
	sariakandi	3.00	12.00	Nawabganj Dhaka			Nawabganj Dhaka		3.00	12.00	Jamalpur Sadar	3.00	12.00		
	Shajahanpur (Majhira) Bogra	3.00	12.00		Savar		Savar		3.00	12.00	Madarganj	3.00	12.00		
	sherpur	3.00	12.00	Biral			Biral		3.00	12.00	Melandaha	3.00	12.00		
Shibganj Bogra	3.00	12.00	Birampur		Birampur		3.00		12.00	Sarishabari	3.00	12.00			
Sonatola	3.00	12.00		Birganj	Birganj		3.00		12.00	Jessore	Abhaynagar	3.00	12.00		
Brahmanbaria	Akshaura	3.00	12.00		Bochaganj (Setabganj)		Bochaganj (Setabganj)		3.00		12.00	Bagherpara	3.00	12.00	
		3.00	12.00	Chirirbandar		Chirirbandar	3.00	12.00	Benapole (Sharsha)		3.00	12.00			
	Ashuganj	3.00	12.00		Chirirbandar	Chirirbandar	3.00	12.00	Dohar		3.00	12.00			
	Banchharampur	3.00	12.00	Dinajpur Sadar		Dinajpur Sadar	3.00	12.00	Chaugachha		3.00	12.00			
	Brahmanbaria Sadar	3.00	12.00		Fulbari	Fulbari	3.00	12.00	Jashore Sadar		3.00	12.00			
	Kasba	3.00	12.00	Ghoraghat		Ghoraghat	3.00	12.00	Jhikargachha	3.00	12.00				
	Nabinagar	3.00	12.00		Hakimpur	Hakimpur	3.00	12.00	Keshabpur	3.00	12.00				
	Nasirnagar	3.00	12.00	Kaharole		Kaharole	3.00	12.00	Manirampur	3.00	12.00				
	Sarail	3.00	12.00		Khansama	Khansama	3.00	12.00	Jhalokati	Jhalokati Sadar	3.00	12.00			
	Chandpur	Chandpur Sadar	3.13	11.87		Jhenaidah	Jhenaidah	3.00		12.00	Kanthalia	3.00	12.00		
Faridganj		3.01	11.99	Jhalokati	Jhalokati						3.00	12.00	Nalchity	3.00	12.00
Haimchar		3.69	11.31		Jhenaidah						Jhenaidah	3.00	12.00	Rajapur	3.00
Haziganj		3.00	12.00	Harinakunda							Harinakunda	3.00	12.00	Jhenaidaha Sadar	3.00
Kachua Chandpur		3.00	12.00		Jhenaidaha Sadar						Jhenaidaha Sadar	3.00	12.00		Kaliganj Jhenaidah
Matlab Dakshin		3.00	12.00	Kotchandpur					Kotchandpur		3.00	12.00	Maheshpur	3.00	12.00
Matlab Uttar (Sengarchar)	3.00	12.00	Shaikupa		Shaikupa	3.00	12.00								

Index score of each growth center's Ecological sensitivity and suitability considering soil salinity in alphabetical order

District	Growth center	Sensitivity	Suitability
Joypurhat	Akkelpur	3.00	12.00
	Joypurhat Sadar	3.00	12.00
	Kalai	3.00	12.00
	Khetlal	3.00	12.00
Khagrachhari	Panchbibbi	3.00	12.00
	Dighinala	3.00	12.00
	Khagrachhari Sadar	3.00	12.00
	Lakshmichhari	3.00	12.00
	Mahalchhari	3.00	12.00
	Manikchhari	3.00	12.00
	Matiranga	3.00	12.00
Khulna	Panchhari	3.00	12.00
	Ramgarh	3.00	12.00
	Batiaghata	8.44	6.56
	Chalna (Dacope)	9.07	5.93
	Dighalia	3.00	12.00
	Dumuria	6.08	8.92
	Khan Jahan Ali (KCC)	3.00	12.00
	Khulna Sadar (KCC)	5.16	9.84
	Koyra	9.37	5.63
	Paikgachha	8.31	6.69
Kishoreganj	Phultala	3.00	12.00
	Rupsa	3.73	11.27
	Terokhada	3.00	12.00
	Austagram	3.00	12.00
	Bajitpur	3.00	12.00
	Bhairab	3.00	12.00
	Hossainpur	3.00	12.00
	Itna	3.00	12.00
	Karimganj	3.00	12.00
	Katiadi	3.00	12.00
Kurigram	Kishoreganj Sadar	3.00	12.00
	Kuliam Char	3.00	12.00
	Mithamain	3.00	12.00
	Nikli	3.00	12.00
	Pakundia	3.00	12.00
	Tarail	3.00	12.00
	Bhurungamari	3.00	12.00
	Char Rajibpur	3.00	12.00
	Chilmari	3.00	12.00
	Kurigram Sadar	3.00	12.00
Kushtia	Nageshwari	3.00	12.00
	Phulbari	3.00	12.00
	Rajarhat	3.00	12.00
	Raumari	3.00	12.00
	Ulipur	3.00	12.00
	Bheramara	3.00	12.00
	Daulatpur Kushtia	3.00	12.00
	Khoksa	3.00	12.00
	Kumarkhali	3.00	12.00
	Kushtia Sadar	3.00	12.00
Lakshmipur	Mirpur Kushtia	3.00	12.00
	Lakshmipur Sadar	4.25	10.75
	Raipur	4.00	11.00
	Ramganj	3.00	12.00
Lalmonirhat	Ramgati	6.26	8.74
	Aditmari	3.00	12.00
	Hatibandha	3.00	12.00
	Kaliganj	3.00	12.00
Madaripur	Lalmonirhat Sadar	3.00	12.00
	Patgram	3.00	12.00
	Kalkini	3.00	12.00
	Madaripur Sadar	3.00	12.00
Madaripur	Rajoir	3.00	12.00
	Shib Char	3.00	12.00

District	Growth center	Sensitivity	Suitability
Magura	Magura Sadar	3.00	12.00
	Mohammadpur	3.00	12.00
	Shalikka	3.00	12.00
	Sreepur Magura	3.00	12.00
Manikganj	Daulatpur Manikganj	3.00	12.00
	Ghior	3.00	12.00
	Harirampur	3.00	12.00
	Manikganj Sadar	3.00	12.00
	Saturia	3.00	12.00
	Shibalaya	3.00	12.00
	Singair	3.00	12.00
Maulvibazar	Barlekha	3.00	12.00
	Juri	3.00	12.00
	Kamalganj	3.00	12.00
	Kulaura	3.00	12.00
	Maulvi Bazar Sadar	3.00	12.00
Meherpur	Rajnagar	3.00	12.00
	Sreemangal	3.00	12.00
	Gangni	3.00	12.00
	Meherpur Sadar	3.00	12.00
Munshiganj	Mujibnagar	3.00	12.00
	Gazaria	3.00	12.00
	Lohajang	3.00	12.00
	Munshiganj Sadar & Mirkadim	3.00	12.00
Mymensingh	Serajdikhan	3.00	12.00
	Sreenagar	3.00	12.00
	Tongibari	3.00	12.00
	Bhaluka	3.00	12.00
	Dhobaura	3.00	12.00
	Fulbaria	3.00	12.00
	Gaffargaon	3.00	12.00
	Gauripur	3.00	12.00
	Haluaghat	3.00	12.00
	Ishwarganj	3.00	12.00
Mukttagachha	3.00	12.00	
Naogaon	Mymensingh Sadar (MCC)	3.00	12.00
	Nandaail	3.00	12.00
	Phulpur	3.00	12.00
	Trishal	3.00	12.00
	Atrai	3.00	12.00
	Badalgachhi	3.00	12.00
	Dhamoirhat	3.00	12.00
	Mahadebpur	3.00	12.00
	Manda	3.00	12.00
	Naogaon Sadar	3.00	12.00
Nazipur (Patnitala)	3.00	12.00	
Narail	Niamatpur	3.00	12.00
	Porsha	3.00	12.00
	Raninagar	3.00	12.00
	Sapahar	3.00	12.00
Narayanganj	Katia	3.00	12.00
	Lohagara Narail	3.00	12.00
	Narail Sadar	3.00	12.00
	Araihazar	3.00	12.00
Narayanganj	Bandar (NCC) & Tarabo	3.00	12.00
	Narayanganj Sadar (NCC) & Shiddhirganj	3.00	12.00
	Rupganj & Kanchan	3.00	12.00
	Sonargaon	3.00	12.00

District	Growth center	Sensitivity	Suitability
Narsingdi	Belabo	3.00	12.00
	Ghorashal (Palash)	3.00	12.00
	Manohardi	3.00	12.00
	Narsingdi Sadar & Madhabdi	3.00	12.00
Netore	Raypura	3.00	12.00
	Shibpur	3.00	12.00
	Bagati Para	3.00	12.00
	Baraigram & Banpara	3.00	12.00
	Gopalpur (Lalpur)	3.00	12.00
	Gurudaspur	3.00	12.00
	Natore Sadar & Naldanga	3.00	12.00
Nawabganj	Singra	3.00	12.00
	Bholahat	3.00	12.00
	Nachole	3.00	12.00
	Nawabganj Sadar	3.00	12.00
Netrakona	Rahanpur (Gomastapur)	3.00	12.00
	Shibganj Nawabganj	3.00	12.00
	Atpara	3.00	12.00
	Barhatta	3.00	12.00
Nilphamari	Durgapur Netrakona	3.00	12.00
	Kalmakanda	3.00	12.00
	Kendua	3.00	12.00
	Khaliajuri	3.00	12.00
	Madan	3.00	12.00
	Mohanganj	3.00	12.00
	Netrokona Sadar	3.00	12.00
Noakhali	Purbadhala	3.00	12.00
	Dimla	3.00	12.00
	Domar	3.00	12.00
	Jaldhaka	3.00	12.00
	Kishoreganj	3.00	12.00
	Nilphamari Sadar	3.00	12.00
	Saidpur	3.00	12.00
	Begumganj (Chowmuhani)	3.24	11.76
	Chatkhil	3.00	12.00
	Companiganj (Bashurhat)	6.45	8.55
Noakhali	6.49	8.51	
Pabna	Kabirhat	5.89	9.11
	Noakhali Sadar	5.58	9.42
	Senbagh	3.22	11.78
	Sonaimuri	3.00	12.00
	Subarnachar	7.07	7.93
	Atgharia	3.00	12.00
	Bera	3.00	12.00
	Bhangura	3.00	12.00
	Chatmohar	3.00	12.00
	Faridpur	3.00	12.00
Ishwardi	3.00	12.00	
Panchagarh	Pabna Sadar	3.00	12.00
	Santhia	3.00	12.00
	Sujanagar	3.00	12.00
	Atwari	3.00	12.00
Patuakhali	Boda	3.00	12.00
	Debiganj	3.00	12.00
	Panchagarh Sadar	3.00	12.00
	Tentulia	3.00	12.00
	Bauphal	3.00	12.00
	Dashmina	4.24	10.76
	Dumki	3.00	12.00
Patuakhali	Galachipa	7.27	7.73
	Kalapara & Kuakata	6.15	8.85
	Mirzaganj	3.08	11.92
	Patuakhali Sadar	3.02	11.98

Index score of each growth center's Ecological sensitivity and suitability considering soil salinity in alphabetical order

District	Growth center	Sensitivity	Suitability
Pirojpur	Bhandaria	3.00	12.00
	Kawkhali Pirojpur	3.00	12.00
	Manohardi	5.31	9.69
	Morrelganj (Zianagar) Pirojpur	3.47	11.53
Rajbari	Raypur	3.00	12.00
	Nazarpur	3.00	12.00
	Nesarabad (Swarupkati)	3.00	12.00
	Pirojpur Sadar	3.00	12.00
	Balia Kandi	3.00	12.00
	Goalandaghat	3.00	12.00
	Pangsha	3.00	12.00
Rajshahi	Rajbari Sadar	3.00	12.00
	Bagha & Arani	3.00	12.00
	Bhabaniganj (Baghmara) & Tahirpur	3.00	12.00
	Charghat	3.00	12.00
	Durgapur Rajshahi	3.00	12.00
	Godagari & Kakanhat	3.00	12.00
	Kesharhat (Mohanpur)	3.00	12.00
	Poba & Katakali & Noahata	3.00	12.00
	Puthia	3.00	12.00
	Rajshahi Sadar (RCC)	3.00	12.00
Rangamati	Tanore & mundumala	3.00	12.00
	Baghai Chhari	3.00	12.00
	Barkal	3.00	12.00
	Belai Chhari	3.00	12.00
	Jurai Chhari	3.00	12.00
	Kaptai	3.00	12.00
	Kawkhali Rangamati	3.00	12.00
	Langadu	3.00	12.00
	Naniarchar	3.00	12.00
	Rajsthal	3.00	12.00
Rangamati Sadar	3.00	12.00	

District	Growth center	Sensitivity	Suitability
Rangpur	Badarganj	3.00	12.00
	Gangachara	3.00	12.00
	Haragacha (Kaunia)	3.00	12.00
	Mitha Pukur	3.00	12.00
Sackhira	Pirgachha	3.00	12.00
	Pirganj Rangpur	3.00	12.00
	Rangpur Sadar (Rangpur CC)	3.00	12.00
	Taraganj	3.00	12.00
	Assasuni	9.18	5.82
	Debhata	7.39	7.61
	Kalaroa	3.00	12.00
Shariatpur	Kaliganj Satkhira	7.68	7.32
	Satkhira Sadar	5.15	9.85
	Shyamnagar	10.00	5.00
	Tala	5.25	9.75
Sherpur	Bhedarganj	3.00	12.00
	Damudya	3.00	12.00
	Gosairhat	3.02	11.98
	Naria	3.00	12.00
Sirajganj	Shariatpur Sadar	3.00	12.00
	Zanjira	3.00	12.00
	Jhenaigati	3.00	12.00
	Nakla	3.00	12.00
Sylhet	Nalitabari	3.00	12.00
	Sherpur Sadar	3.00	12.00
	Sreebardi	3.00	12.00
	Belkuchi	3.00	12.00
	Chauhali	3.00	12.00
	Kamarkhanda	3.00	12.00
	Kazipur	3.00	12.00
	Royganj	3.00	12.00
	Shahjadpur	3.00	12.00
	Sirajganj Sadar	3.00	12.00
Tarash	3.00	12.00	
Ullah Para	3.00	12.00	

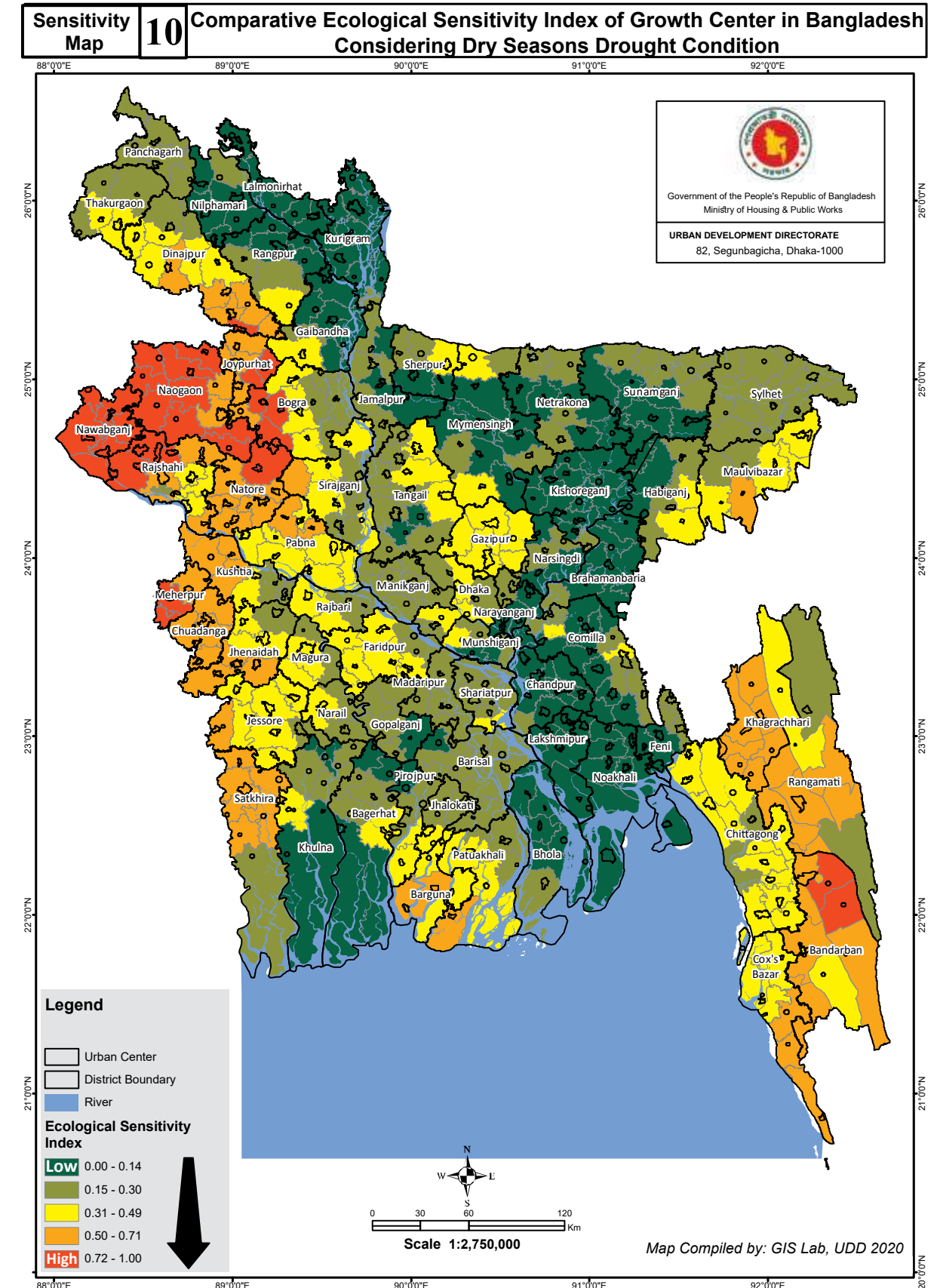
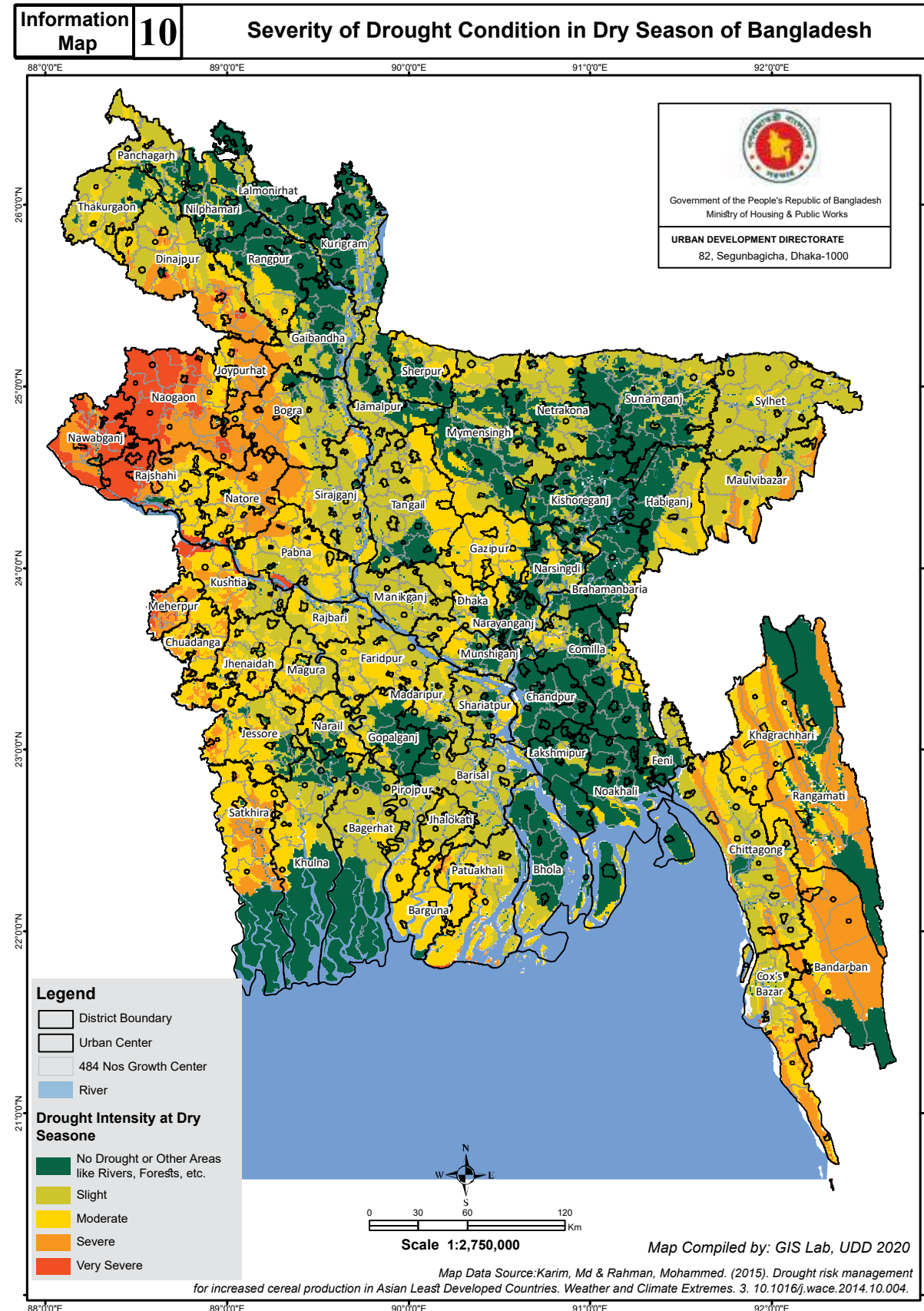
District	Growth center	Sensitivity	Suitability
Sunamganj	Bishwambarpur	3.00	12.00
	Chhatak	3.00	12.00
	Derai	3.00	12.00
	Dharampasha	3.00	12.00
	Dowarabazar	3.00	12.00
	Jagannathpur	3.00	12.00
	Jamalganj	3.00	12.00
	South Sunamganj	3.00	12.00
	Sulla	3.00	12.00
	Sunamganj Sadar	3.00	12.00
Tangail	Tahirpur	3.00	12.00
	Balaganj	3.00	12.00
	Beanibazar	3.00	12.00
	Bishwanath	3.00	12.00
	Companiganj Sylhet	3.00	12.00
	Fenchuganj	3.00	12.00
	Golabganj	3.00	12.00
	Gowainghat	3.00	12.00
	Jaintiapur	3.00	12.00
	Kanaighat	3.00	12.00
Thakurgaon	South Surma (Sylhet CC)	3.00	12.00
	Sylhet Sadar (Sylhet CC)	3.00	12.00
	Zakiganj	3.00	12.00
	Basail	3.00	12.00
	Bhuapur	3.00	12.00
	Delduar	3.00	12.00
	Dhanbari	3.00	12.00
	Ghatal	3.00	12.00
	Gopalpur	3.00	12.00
	Kalithati	3.00	12.00
Madhupur	3.00	12.00	
Mirzapur	3.00	12.00	
Nagarpur	3.00	12.00	
Sakhipur	3.00	12.00	
Tangail Sadar	3.00	12.00	
Baliadangi	3.00	12.00	
Haripur	3.00	12.00	
Pirganj Thakurgaon	3.00	12.00	
Ranisankail	3.00	12.00	
Thakurgaon Sadar	3.00	12.00	

Data Compiled by GIS Lab UDD, 2020

Soil Salinity

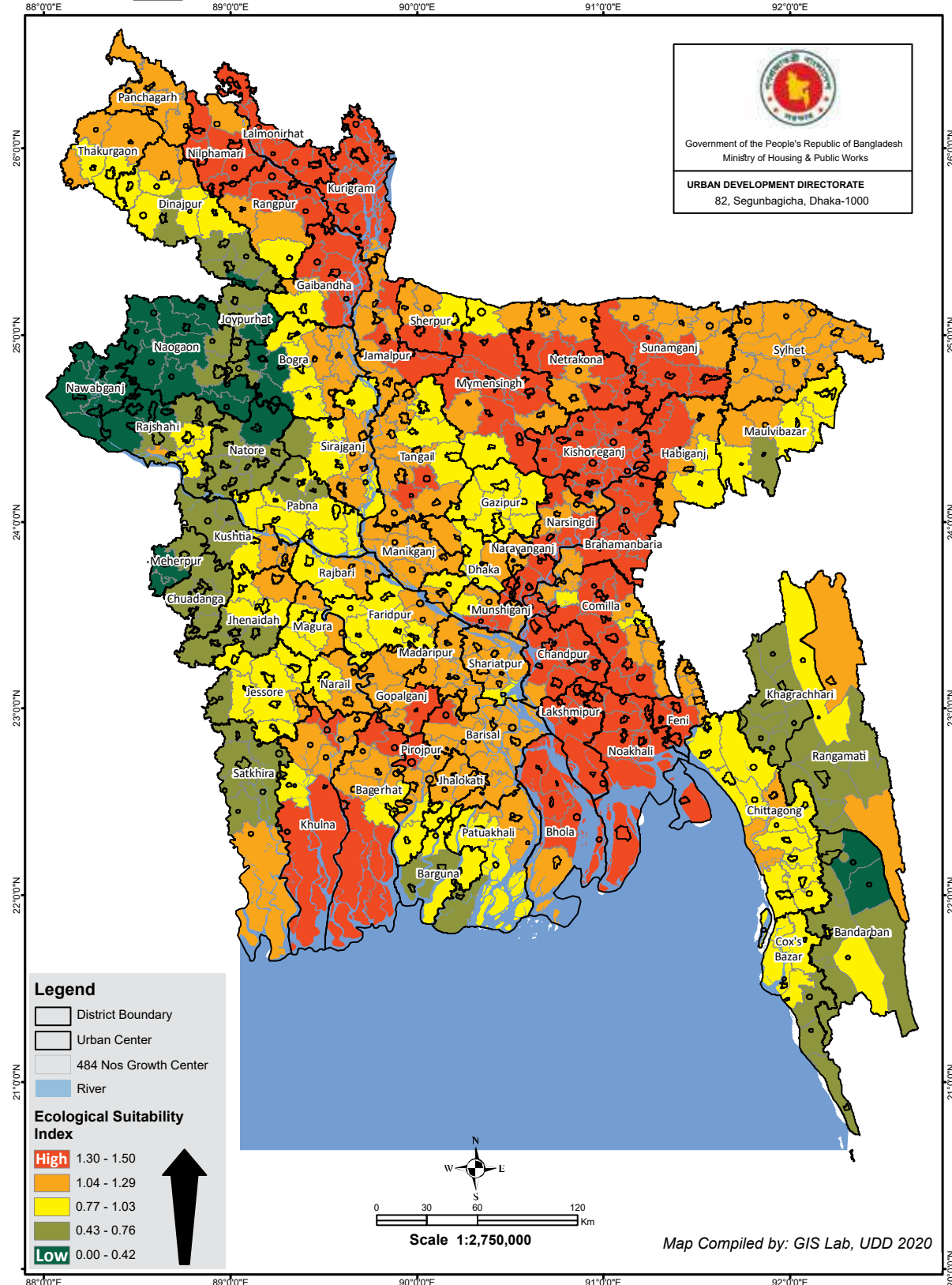
Soil salinity problem at coastal area, particularly at south western coastal region of Bangladesh is a historical desolation for the inhabitants of those areas. Sea level rise and continuous reduction of flow at upstream of water channels in dry season are threatening the situation to be more problematic in near future. According to WHO standard, acceptable salinity level is below 2MMHOS/cm. In Bangladesh there are areas with salinity level above 4MMHOS/cm which is considered as extreme saline soil.

Ecological Variables : Drought



Index score and summary table of growth center ecological suitability considering drought

Suitability Map 10 Comparative Ecological Suitability Index of Growth Center in Bangladesh Considering Dry Season Drought Condition



Suitability Chart No 10 (a): Growth Center Ecological Suitability Statistics Considering Drought Intensity

Drought and Ecological Suitability Index Score	Administrative Level	Growth Center (Nos)	Total Population 2011	(%)	Urban Population 2011	(%)	Area (SqKM)	(%)
Score: 0.00 - 0.42	District_HQ	2	629735	0.44	190752	0.56	695.73	0.48
	Paurashava_HQ	15	3595474	2.51	458245	1.35	4638.86	3.19
	Upazilla_HQ	11	1808761	1.26	137533	0.41	3284.80	2.26
Score: 0.43 - 0.76	District_HQ	9	2720895	1.90	939435	2.78	3292.66	2.26
	Paurashava_HQ	33	7419943	5.18	1165994	3.45	9647.39	6.63
	Upazilla_HQ	22	3077301	2.15	280372	0.83	7856.28	5.40
Score: 0.77 - 1.03	City Corporation HQ	2	2247765	1.57	801302	2.37	581.89	0.40
	District_HQ	11	5006289	3.49	1564514	4.63	3966.37	2.73
	Paurashava_HQ	58	18789241	13.11	2439595	7.21	20238.45	13.91
	Upazilla_HQ	30	7116784	4.97	512095	1.51	7942.75	5.46
Score: 1.04 - 1.29	CAP	1	8747042	6.10	8747042	25.86	305.84	0.21
	City Corporation HQ	6	6008481	4.19	5045348	14.92	1300.66	0.89
	District_HQ	16	5450318	3.80	1306359	3.86	4724.88	3.25
	Paurashava_HQ	67	18514500	12.92	2613746	7.73	19572.50	13.45
	Upazilla_HQ	62	11294339	7.88	692071	2.05	17067.13	11.73
Score: 1.30 - 1.50	City Corporation HQ	6	3596941	2.51	1780013	5.26	928.31	0.64
	District_HQ	15	7166211	5.00	1685424	4.98	5009.79	3.44
	Paurashava_HQ	65	19470296	13.59	2661256	7.87	19822.00	13.62
	Upazilla_HQ	53	10661418	7.44	798128	2.36	14671.02	10.08
Total		484	143321734	100.00	33819224	100.00	145547.31	100.00

Data Compiled by GIS Lab UDD, 2020

Suitability Chart No 10 (b): Name of Growth Center and Ecological Suitability Considering Drought Intensity

Drought and Ecological Suitability Index Score	Administrative Level	Growth Center (Nos)	Name of Growth Center
Score: 0.00 - 0.42	District_HQ	2	Meherpur Sadar, Nawabganj Sadar
	Paurashava_HQ	15	Dhamoirhat, dhupchanchia, Godagari & Kakanhat, Hakimpur, kahaloo, Kalai, Kesharhat (Mohanpur), Mahadebpur, Nachole, nandigram, Nazipur (Patnitala), Rahanpur (Gomastapur), Shibganj Nawabganj, Singra, Tanore & mundumala
	Upazilla_HQ	11	Atrai, Bholahat, Khetlal, Manda, Mujibnagar, Niamatpur, Porsha, Raninagar, Rowangchhari, Ruma, Sapahar
Score: 0.43 - 0.76	District_HQ	9	Bandarban Sadar, Chuadanga Sadar, Dinajpur Sadar, Joypurhat Sadar, Khagrachhari Sadar, Naogaon Sadar, Natore Sadar & Naldanga, Rangamati Sadar, Satkhira Sadar
	Paurashava_HQ	33	Adamdighi, Akkelpur, Alamdanga, Bagati Para, Bagha & Arani, Baraigram & Banpara, Benapole (Sharsha), Bhabanigonj (Baghmara) & Tahirpur, Bheramara, Birampur, Chatmohar, Darshana (Damurhuda), Faridpur, Fulbari, Gangni, Ghoraghat, Gopalpur (Lalpur), Gurudaspur, Jibannagar, Kalapara & Kuakata, Kalaroa, Kaliganj Jhenaidah, Kamalganj, Kotchandpur, Lama, Maheshpur, Matiranga, Mirpur Kushtia, Panchbibi, Patharghata, Poba & Katakhalai & Noahata, Ramgarh, Teknaf
	Upazilla_HQ	22	Assasuni, Badalgachhi, Barkal, Daulatpur Kushtia, Debhata, Jurai Chhari, Kaliganj Satkhira, Kaptai, Kawkhali Rangamati, Lakshmichhari, Mahalchhari, Manikchhari, Naikhongchhari, Naniarchar, Nawabganj Dinajpur, Panchhari, Rajasthali, Ramu, Tala, Tarash, Thanchi, Ukhia

Ecological Variables : Drought

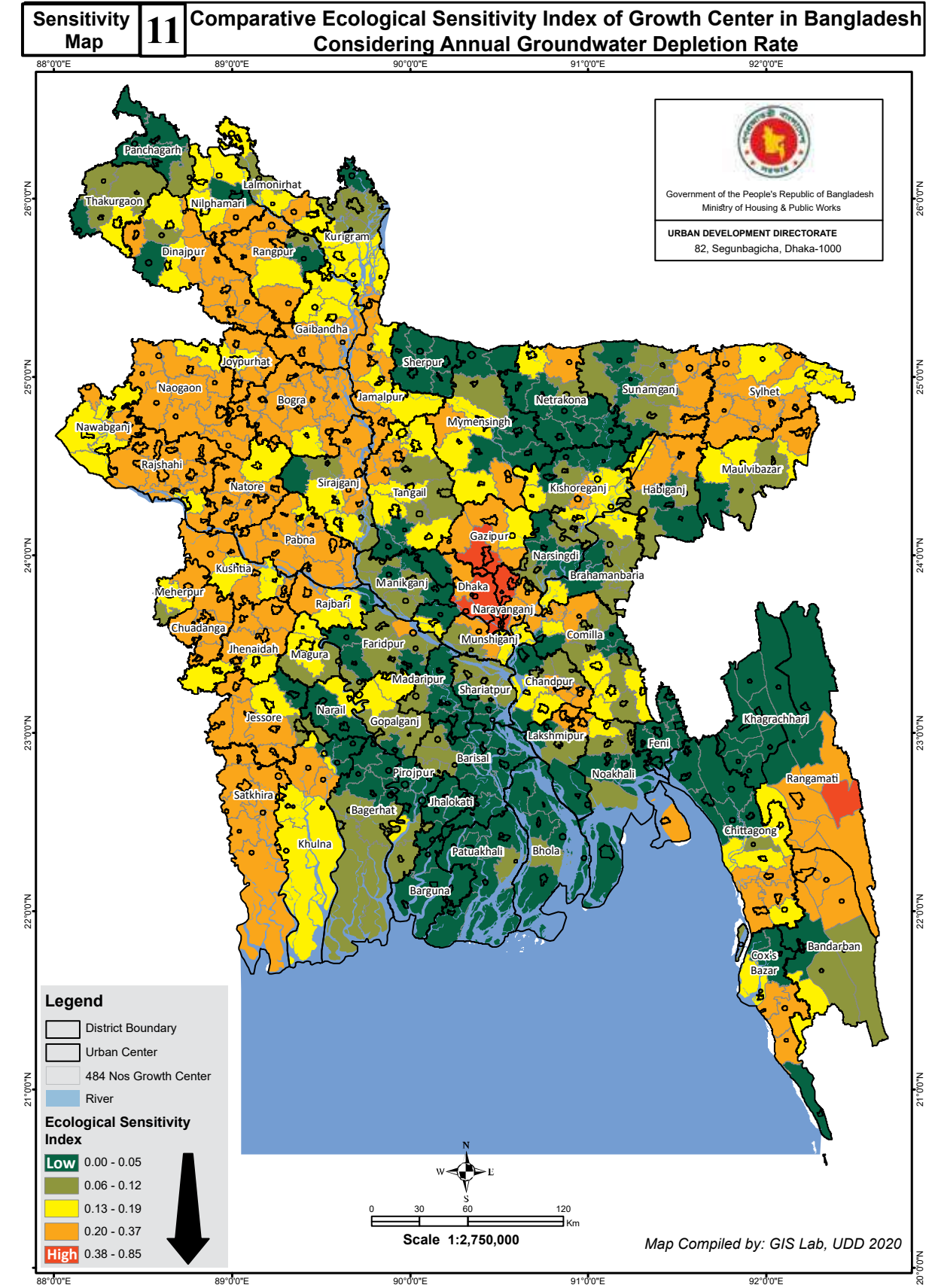
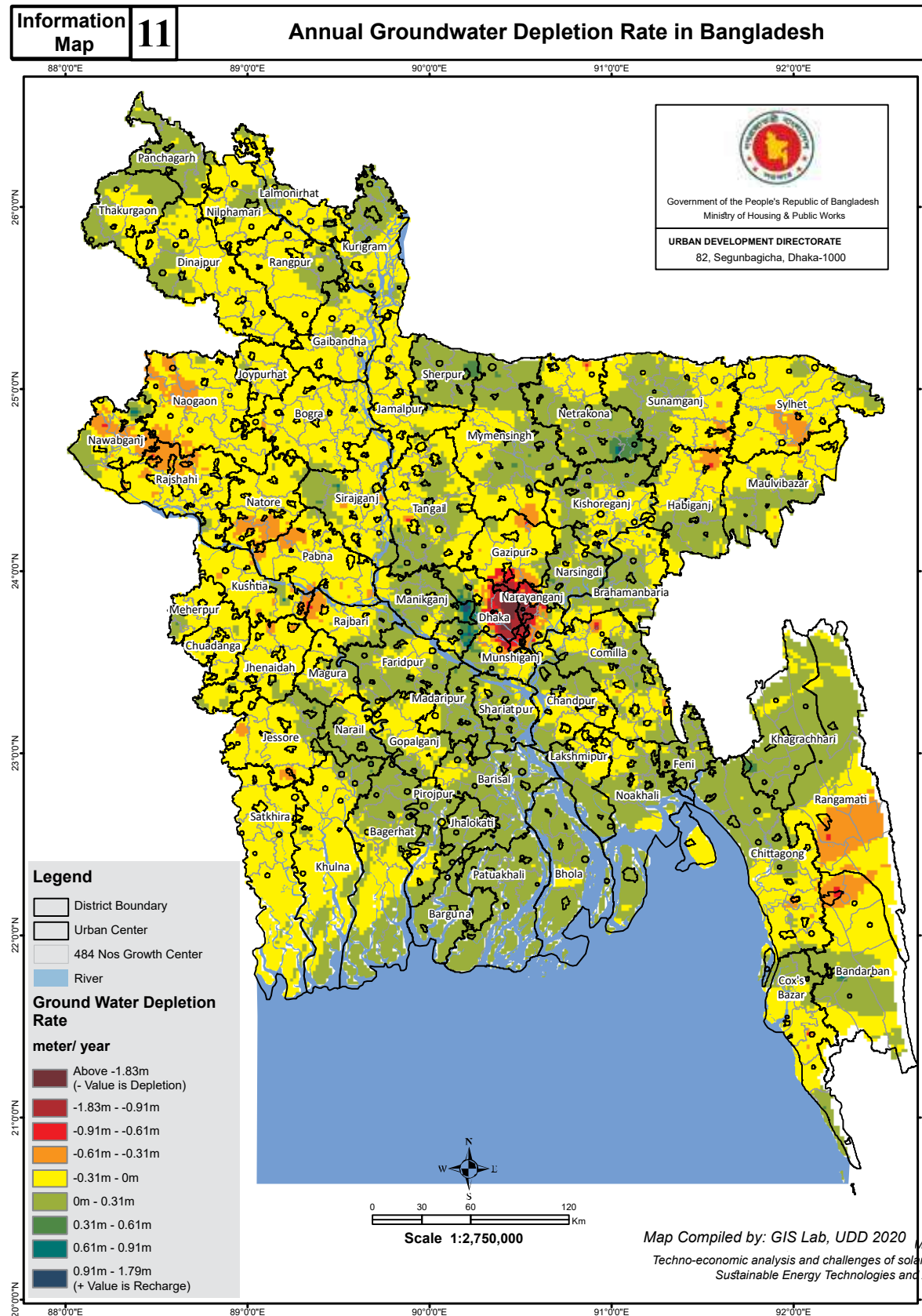
Suitability Chart No 10 (b): Name of Growth Center and Ecological Suitability Considering Drought Intensity			
Drought and Ecological Suitability Index Score	Administrative Level	Growth Center (Nos)	Name of Growth Center
Score: 0.77 - 1.03	City Corporation HQ	2	Cumilla Sadar (Cumilla CC), Gazipur Sadar (GCC & Tongi)
	District_HQ	11	Barguna Sadar, Bogura Sadar, Cox's Bazar Sadar, Faridpur Sadar, Jashore Sadar, Jhenaidaha Sadar, Kushtia Sadar, Magura Sadar, Narail Sadar, Pabna Sadar, Patuakhali Sadar
	Paurashava_HQ	58	Amtali, Atgharia, Bagherpara, Banshkhali, Barlekha, Bera, Betagi, Bhaluka, Bhanga, Bhangua, Boalmari, Bochaganj (Setabganj), Chakaria, Chandanaish, Charghat, Chaugachha, Chunarughat, Durgapur Rajshahi, Galachipa, Ghatail, Gobindaganj, Harinakunda, Ishwardi, Jhikargachha, Kaliakair, Kaliganj Gazipur, Kazipur, Keshabpur, Kulaura, Madhupur, Maheshkhali, Manirampur, Mathbaria, Mirsharai (Baraiarhat), Morrelganj Bagerhat, Nagarkanda, Nalitabari, Paikgachha, Pangsha, Parbatipur, Patiya, Pirganj Thakurgaon, Puthia, Rangunia, Ranisankail, Roynanj, Sakhipur, Santhia, Satkania, Savar, Shalikh, sherpur, Shibganj Bogra, Sitakunda, Sreemangal, Sreepur Gazipur, Sujaganar, Ullah Para
	Upazilla_HQ	30	Alfadanga, Alikadam, Bahubal, Balia Kandi, Bamna, Bhandaria, Biral, Boalkhali, Chauhali, Chirirbandar, Fatikchhari, Gosairhat, Haluaghat, Hathazari, Juri, Kaharole, Kanthalia, Kapasia, Keraniganj, Kutubdia, Langadu, Lohagara Chittagong, Madhukhali, Mirzaganj, Nawabganj Dhaka, Pekua, Pirganj Rangpur, Shajahanpur (Majhira) Bogra, Sreenagar, Titash
Score: 1.04 - 1.29	CAP	1	Dhaka City (DNCC & DSCC)
	City Corporation HQ	6	Barisal Sadar (BCC), Chattogram City (CCC), Rajshahi Sadar (RCC), South Cumilla (Cumilla CC), South Surma (Sylhet CC), Sylhet Sadar (Sylhet CC)
	District_HQ	16	Bagerhat Sadar, Gopalganj Sadar, Habiganj Sadar & Shayestaganj, Jhalokati Sadar, Madaripur Sadar, Manikganj Sadar, Maulvi Bazar Sadar, Munshiganj Sadar & Mirkadim, Panchagarh Sadar, Pirojpur Sadar, Rajbari Sadar, Shariatpur Sadar, Sirajganj Sadar, Sunamganj Sadar, Tangail Sadar, Thakurgaon Sadar
	Paurashava_HQ	67	Abhaynagar, Badarganj, Baghai Chhari, Bakerganj, Banaripara, Bauphal, Beanibazar, Belkuchi, Bhairab, Bhedarganj, Bhuapur, Birganj, Boda, Char Fasson, Chauddagam, Chhagalnaiya, Chhatak, Damudya, Dewanganj, Dhamrai, Dhanbari, dhunat, Dohar, Durgapur Netrakona, Fulbaria, gabtali, Gaurnadi, Ghorashal (Palash), Goalandaghat, Golabganj, Gopalpur, Homna, Islampur, Kalia, Kalihati, Kalkini, Kanaighat, Kendua, Khoksa, Kumarkhali, Lohagara Narail, Madarganj, Madhabpur, Mehendiganj, Mirzapur, Muksudpur, Muladi, Nabiganj, Nalchity, Nandail, Naria, Nesarabad (Swarupkati), Parshuram, Raozan, Ruppangj & Kanchan, sariakandi, Sarishabari, Shahjadpur, Shaikupa, Shib Char, Shibpur, Singair, Sonatola, Sreebardi, Tungipara, Zakiganj, Zanjira
Score: 1.30 - 1.50	City Corporation HQ	6	Bandar (NCC) & Tarabo, Khan Jahan Ali (KCC), Khulna Sadar (KCC), Mymensingh Sadar (MCC), Narayanganj Sadar (NCC) & Shiddhirganj, Rangpur Sadar (Rangpur CC)
	District_HQ	15	Bhola Sadar, Brahmanbaria Sadar, Chandpur Sadar, Feni Sadar, Gaibandha Sadar, Jamalpur Sadar, Kishoreganj Sadar, Kurigram Sadar, Lakshimpur Sadar, Lalmonirhat Sadar, Narsingdi Sadar & Madhabdi, Netrokona Sadar, Nilphamari Sadar, Noakhali Sadar, Sherpur Sadar
	Paurashava_HQ	65	Ajmiriganj, Akhaura, Bajitpur, Barura, Begumganj (Chowmuhani), Burhanuddin, Chalna (Dacope), Chandina, Chatkhil, Companiganj (Bashurhat) Noakhali, Daganbhuiyan, Daudkandi, Daulat Khan, Debidwar, Derai, Domar, Faridganj, Gaffargaon, Gauripur, Haragacha (Kaunia), Hatiya, Haziganj, Hossainpur, Ishwarganj, Jagannathpur, Jaldhaka, Kabirhat, Kachua Chandpur, Karimganj, Kasba, Katiadi, Kotalipara, Kuliar Char, Laksam, Lalmohan, Madan, Manohardi, Matlab Dakshin, Matlab Uttar (Sengarchar), Melandaha, Mohanganj, Mongla, Muktagachha, Nabinagar, Nageshwari, Nakla, Nangalkot, Pakundia, Patgram, Phulpur, Purbadhala, Raipur, Ramganj, Ramgati, Raypura, Saidpur, Sandwip, Senbagh, Shahrasti, Sonagazi, Sonaimuri, Sonargaon, Sundarganj, Trishal, Ulipur
	Upazilla_HQ	53	Aditmari, Agailjhara, Araihasar, Ashuganj, Austagram, Bakshiganj, Baniachong, Barhatta, Basail, Bhurungamari, Brahman Para, Chilmari, Chitalmari, Delduar, Dharampasha, Dighalia, Fulchhari, Gangachara, Gazaria, Hatibandha, Itna, Jamalganj, Kaliganj Lalmonirhat, Khaliajuri, Kishoreganj, Koyra, Lakhai, Lohajang, Manpura, Mithamain, Mollahat, Monoharganj, Muradnagar, Nagarpur, Nasirnagar, Nazirpur, Nikli, Phulbari, Phultala, Pirgachha, Rajarhat, Raumari, Sadullapur, Saghatta, Sarail, Sarankhola, South Sunamganj, Subarnachar, Sullia, Taraganj, Tarail, Tazumuddin, Tongibari

Data Compiled by GIS Lab UDD, 2020

Index score of each growth center's Ecological sensitivity and suitability considering drought intensity in alphabetical order

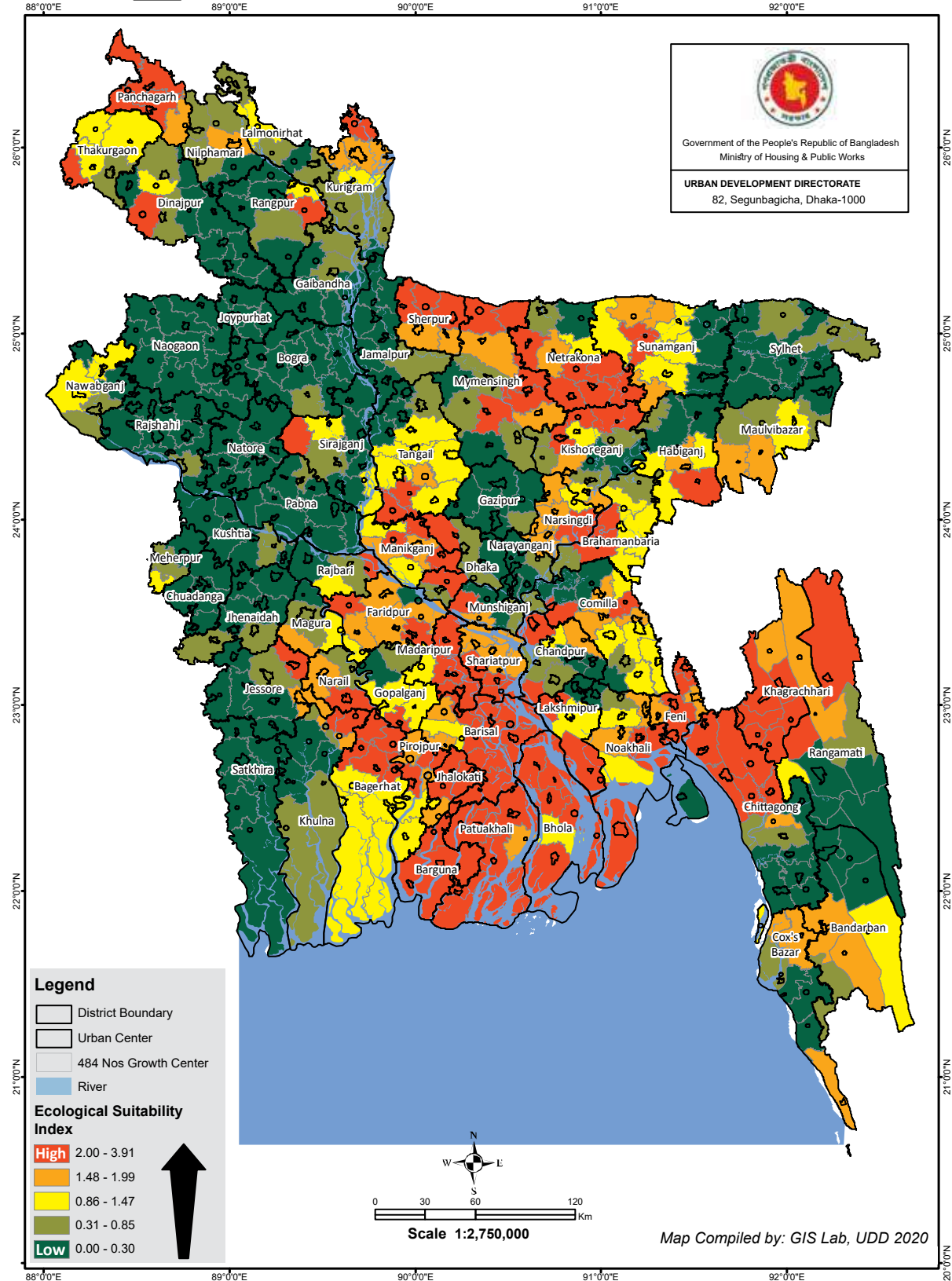
District	Growth center	Sensitivity	Suitability	District	Growth center	Sensitivity	Suitability	District	Growth center	Sensitivity	Suitability
Bagerhat	Bagerhat Sadar	0.38	1.12	Chittagong	Anowara	0.38	1.12	Faridpur	Nawabganj	0.90	0.60
	Chitalmari	0.20	1.30		Banshkhali	0.56	0.94		Parbatipur	0.65	0.85
	Fakirhat	0.33	1.17		Boalkhali	0.54	0.96		Alfadanga	0.54	0.96
	Kachua Bagerhat	0.38	1.12		Chandanaish	0.70	0.80		Bhanga	0.64	0.86
	Mollahat	0.17	1.33		Chattogram City (CCC)	0.23	1.27		Boalmari	0.54	0.96
	Mongla	0.04	1.46		Fatikchhari	0.67	0.83		Char Bhadrason	0.28	1.22
	Morrelganj Bagerhat	0.48	1.02		Hathazari	0.56	0.94		Faridpur Sadar	0.47	1.03
	Rampal	0.36	1.14		Lohagara Chittagong	0.62	0.88		Madhukhali	0.54	0.96
	Sarankhola	0.08	1.42		Mirsharai (Baraiarhat)	0.53	0.98		Nagarkanda	0.68	0.82
	Atikadam	0.59	0.91		Patiya	0.56	0.94		Sadarpur	0.37	1.13
Bandarban	Bandarban Sadar	0.92	0.58	Rangunia	0.59	0.91	Feni	Chhagalnaiya	0.34	1.18	
	Lama	0.93	0.57	Raozan	0.42	1.08		Daganbhuiyan	0.09	1.41	
	Naikhongchhari	0.98	0.52	Sandwip	0.05	1.45		Feni Sadar	0.06	1.46	
	Rowangchhari	1.08	0.42	Satkania	0.52	0.98		Fulgazi	0.37	1.13	
Barguna	Amtali	0.71	0.79	Sitakunda	0.60	0.90	Parshuram	0.37	1.12		
	Bamna	0.72	0.78	Chuadanga	Alamdanga	0.83	0.67	Sonagazi	0.03	1.47	
	Barguna Sadar	0.74	0.76		Chuaadanga Sadar	0.81	0.69	Fulchhari	0.17	1.33	
	Betagi	0.66	0.84		Darshana (Damurhuda)	0.86	0.64	Gaibandha Sadar	0.05	1.45	
Patharghata	0.75	0.75	Jibannagar		0.80	0.70	Gobindaganj	0.57	0.93		
Barisal	Agailjhara	0.15	1.35	Comilla	Barura	0.00	1.50	Gaibandha	Palashbari	0.30	1.20
	Babuganj	0.37	1.13		Brahman Para	0.08	1.42		Sadullapur	0.19	1.31
	Bakerganj	0.37	1.13		Burichang	0.42	1.08		Saghatta	0.14	1.36
	Banaripara	0.30	1.20		Chandina	0.01	1.49		Sundarganj	0.05	1.45
	Barisal Sadar (BCC)	0.31	1.19		Chauddagram	0.21	1.29	Gazipur	Gazipur Sadar (GCC & Tongi)	0.71	0.79
	Gaurnadi	0.36	1.14		Cumilla Sadar (Cumilla CC)	0.48	1.02		Katiakair	0.67	0.83
	Hizla	0.37	1.13		Daudkandi	0.06	1.44		Kaliganj Gazipur	0.56	0.94
	Mehendiganj	0.26	1.24		Debidwar	0.03	1.47		Kapasia	0.59	0.91
	Muladi	0.31	1.19		Homna	0.37	1.13	Sreepur Gazipur	0.73	0.77	
	Wazirpur	0.22	1.28		Laksam	0.00	1.50	Gopalganj	Gopalganj Sadar	0.23	1.27
Bhola	Bhola Sadar	0.10	1.40	Meghna	0.43	1.07	Kashiani		0.25	1.25	
	Burhanuddin	0.01	1.49	Monoharganj	0.00	1.50	Kotalipara		0.00	1.50	
	Char Fasson	0.35	1.15	Muradnagar	0.06	1.44	Muksudpur		0.35	1.15	
	Daulat Khan	0.06	1.44	Nangalkot	0.04	1.46	Tungipara	0.23	1.27		
Bogra	Lalmohan	0.01	1.49	Cox's Bazar	South Cumilla (Cumilla CC)	0.42	1.08	Habiganj	Ajmiriganj	0.00	1.50
	Manpura	0.09	1.41		Chakaria	0.50	1.00		Bahubal	0.51	0.99
	Tazumuddin	0.04	1.46		Cox's Bazar Sadar	0.67	0.83		Baniachong	0.02	1.48
	Adamdighi	1.03	0.47		Kutubdia	0.68	0.82		Chunarughat	0.58	0.92
	Bogura Sadar	0.53	0.97		Maheshkhali	0.57	0.93	Habiganj Sadar & Shayestaganj	0.22	1.28	
	dhunat	0.34	1.16		Pekua	0.47	1.03	Lakhai	0.00	1.50	
	dhupchanchia	1.13	0.37		Ramu	0.91	0.59	Madhabpur	0.24	1.26	
	gabtali	0.34	1.16		Teknaf	1.01	0.49	Nabiganj	0.29	1.21	
	kahaloo	1.10	0.40		Ukhia	0.93	0.57	Bakshiganj	0.20	1.30	
	nandigram	1.12	0.38		Dhaka	Dhaka City (DNCC & DSCC)	Dhaka City (DNCC & DSCC)	0.35	1.15	Dewanganj	0.32
sariakandi	0.28	1.22	Dhamrai	0.39			1.11	Islampur	0.22	1.28	
Shajahanpur (Majhira) Bogra	0.68	0.82	Dohar	0.35			1.15	Jamalpur Sadar	0.20	1.30	
sherpur	0.66	0.84	Keraniganj	0.47			1.03	Madarganj	0.34	1.16	
Shibganj Bogra	0.55	0.95	Nawabganj Dhaka	0.52	0.98	Melandaha	0.11	1.39			
Sonatola	0.24	1.26	Savar	0.65	0.85	Sarishabari	0.34	1.16			
Brahmanbaria	Akhaura	0.20	1.30	Biral	0.67	0.83	Jessore	Abhaynagar	0.23	1.27	
	Ashuganj	0.04	1.46	Birampur	1.03	0.47		Bagherpara	0.57	0.93	
	Banchharampur	0.24	1.26	Birganj	0.40	1.10		Benapole (Sharsha)	0.90	0.60	
	Brahmanbaria Sadar	0.13	1.37	Bochaganj (Setabganj)	0.66	0.84		Dohar	0.71	0.79	
Chandpur	Kasba	0.08	1.42	Dinajpur	Chirirbandar	0.67	0.83	Jashore Sadar	0.51	0.99	
	Nabinagar	0.02	1.48		Dinajpur Sadar	0.88	0.62	Jhikargachha	0.73	0.77	
	Nasirnagar	0.00	1.50		Fulbari	1.04	0.46	Keshabpur	0.54	0.96	
	Sarail	0.05	1.45		Ghoraghat	0.87	0.63	Manirampur	0.50	1.00	
	Chandpur Sadar	0.13	1.37		Hakimpur	1.10	0.40	Jhalokati	Jhalokati Sadar	0.40	1.10
	Faridganj	0.00	1.50		Kaharole	0.62	0.88		Kanthalia	0.66	0.84
	Haimchar	0.22	1.28		Khansama	0.44	1.06		Nalchity	0.36	1.14
	Haziganj	0.00	1.50		Jhenaidah	Jhenaidah	Harinakunda		0.63	0.87	Rajapur
Kachua Chandpur	0.00	1.50	Jhenaidaha Sadar	0.60			0.90	Jhenaidah	Kaliganj Jhenaidah	0.76	0.74
Matlab Dakshin	0.00	1.50	Kaliganj Jhenaidah	0.76			0.74		Kotchandpur	0.80	0.70
Matlab Uttar (Sengarchar)	0.03	1.47	Maheshpur	0.84			0.66		Shailkupa	0.44	1.06
Shahrasti	0.00	1.50									

Ecological Variables : Gw. Depletion



Ecological Variables : Gw. Depletion

Suitability Map 11 Comparative Ecological Suitability Index of Growth Center in Bangladesh Considering Annual Groundwater Depletion Rate



Index score and summary table of growth center ecological suitability considering ground water depletion rate

Suitability Chart No 11 (a): Growth Center Ecological Suitability Statistics Considering Ground Water Depletion Rate

Ground Water Depletion and Ecological Suitability Index Score	Administrative Level	Growth Center (Nos)	Total Population 2011	(%)	Urban Population 2011	(%)	Area (SqKM)	(%)
Score: 0.00 - 0.30	CAP	1	8747042	6.10	8747042	25.86	305.84	0.21
	City Corporation HQ	7	5814036	4.06	2799454	8.28	1492.29	1.03
	District_HQ	13	5242817	3.66	1783197	5.27	4595.74	3.16
	Paurashava_HQ	95	26130084	18.23	3882267	11.48	26487.38	18.20
	Upazilla_HQ	63	13264104	9.25	876905	2.59	19234.78	13.22
Score: 0.31 - 0.85	City Corporation HQ	3	4471011	3.12	4073070	12.04	591.94	0.41
	District_HQ	13	5581286	3.89	1508014	4.46	4513.57	3.10
	Paurashava_HQ	35	11324301	7.90	1471089	4.35	10446.33	7.18
Score: 0.86 - 1.47	Upazilla_HQ	19	4654029	3.25	289924	0.86	6808.14	4.68
	City Corporation HQ	1	532419	0.37	296010	0.88	263.00	0.18
	District_HQ	7	3244185	2.26	745439	2.20	2776.36	1.91
Score: 1.47 - 1.99	Paurashava_HQ	26	8196332	5.72	1035850	3.06	9219.34	6.33
	Upazilla_HQ	28	4935131	3.44	389759	1.15	8129.03	5.59
	City Corporation HQ	2	508704	0.35	118821	0.35	155.51	0.11
Score: 2.00 - 3.91	District_HQ	7	2958277	2.06	777178	2.30	2145.06	1.47
	Paurashava_HQ	29	8354436	5.83	1183074	3.50	8146.64	5.60
	Upazilla_HQ	21	3065812	2.14	273647	0.81	5874.40	4.04
Total	City Corporation HQ	1	527017	0.37	339308	1.00	308.12	0.21
	District_HQ	13	3946883	2.75	872656	2.58	3658.70	2.51
	Paurashava_HQ	53	13784301	9.62	1766556	5.22	19619.52	13.48
	Upazilla_HQ	47	8039527	5.61	589964	1.74	10775.64	7.40
Total		484	143321734	100.00	33819224	100.00	145547.31	100.00

Data Compiled by GIS Lab UDD, 2020

Suitability Chart No 11 (b): Name of Growth Center and Ecological Suitability Considering Ground Water Depletion Rate

Ground Water Depletion and Ecological Suitability Index Score	Administrative Level	Growth Center (Nos)	Name of Growth Center
Score: 0.00 - 0.30	CAP	1	Dhaka City (DNCC & DSCC)
	City Corporation HQ	7	Bandar (NCC) & Tarabo, Gazipur Sadar (GCC & Tongi), Narayanganj Sadar (NCC) & Shiddhirganj, Rajshahi Sadar (RCC), Rangpur Sadar (Rangpur CC), South Surma (Sylhet CC), Sylhet Sadar (Sylhet CC)
	District_HQ	13	Bandarban Sadar, Bogura Sadar, Chuadanga Sadar, Cox's Bazar Sadar, Jhenaidaha Sadar, Joypurhat Sadar, Kusthia Sadar, Naogaon Sadar, Natore Sadar & Naldanga, Pabna Sadar, Rangamati Sadar, Satkhira Sadar, Sirajganj Sadar
	Paurashava_HQ	95	Adamdighi, Akkelpur, Alamdanga, Atgharia, Badarganj, Bagati Para, Bagha & Arani, Banshkhal, Baraigram & Banpara, Barlekha, Beanibazar, Belkuchi, Benapole (Sharsha), Bera, Bhabanigonj (Baghmara) & Tahirpur Bhaluka, Bheramara, Bhuapur, Birampur, Bochaganj (Setabganj), Chandanaish, Chatkhil, Chatmohar, Chaugachha, Chhatak, Darshana (Damurhuda), Dewanganj, Dhanoirhat, dhunat, dhupchanchia, Durgapur Rajshahi, Faridpur, Fulbari, gabtali, Gangni, Ghoraghat, Gobindaganj, Godagari & Kakanhat, Golabganj, Gopalpur, Gopalpur (Lalpur), Gurudaspur, Hakimpur, Harinakunda, Haziganj, Homna, Ishwardi, Islampur, Jagannathpur, Jhikargachha, Jibannagar, kahaloo, Kalai, Kalaroa, Kaliakair, Kazipur, Keshabpur, Kesharhat (Mohanpur), Khoksa, Kotchandpur, Madarganj, Mahadebpur, Manirampur, Melandaha, Mirpur Kushtia, Muktagachha, Nabiganj, Nachole, nandigram, Nazipur (Patnitala), Paikgachha, Panchbibi, Pangsha, Parbatipur, Poba & Katakhal & Noahata, Puthia, Ramganj, Rangunia, Rupganj & Kanchan, Saidpur, Sandwip, Santhia, sariakandi, Sarishabari, Satkania, Shahjadpur, Shahrasti, Shaikupa, Shibganj Bogra, Singra, Sonargaon, Sonatola, Sreepur Gazipur, Sujannagar, Tanore & mundumala
	Upazilla_HQ	63	Aditmari, Anowara, Assasuni, Atrai, Austagram, Badalgachhi, Bakshiganj, Balaganj, Baniachong, Batiaghata, Belai Chhari, Bholahat, Bishwanath, Char Bhadrason, Char Rajibpur, Chirirbandar, Companiganj Sylhet, Daulatpur Kushtia, Debhata, Dowarabazar, Dumuria, Fenchuganj, Fulchhari, Gangachara, Jaintiapur, Jurai Chhari, Kaliganj Satkhira, Kalmakanda, Kamarkhanda, Kapsia, Kaptai, Kashiani, Khansama, Khetlal, Kishoreganj, Lohagara Chittagong, Manda, Meghna, Monoharganj, Muradnagar, Nawabganj Dinajpur, Niamatpur, Nikli, Palashbari, Pirganj Rangpur, Porsha, Rajasthali, Ramu, Raninagar, Rowangchhari, Ruma, Sadullapur, Saghatta, Sapahar, Serajdikhan, Shajahanpur (Majhira) Bogra, Shyamnagar, Sreepur Magura, Tala, Taraganj, Titash, Tongibari, Ukhia
Score: 0.86 - 1.47	City Corporation HQ	1	South Cumilla (Cumilla CC)
	District_HQ	7	Brahmanbaria Sadar, Gopalganj Sadar, Kurigram Sadar, Lakshmipur Sadar, Sunamganj Sadar, Tangail Sadar, Thakurgaon Sadar

Ecological Variables : Gw. Depletion

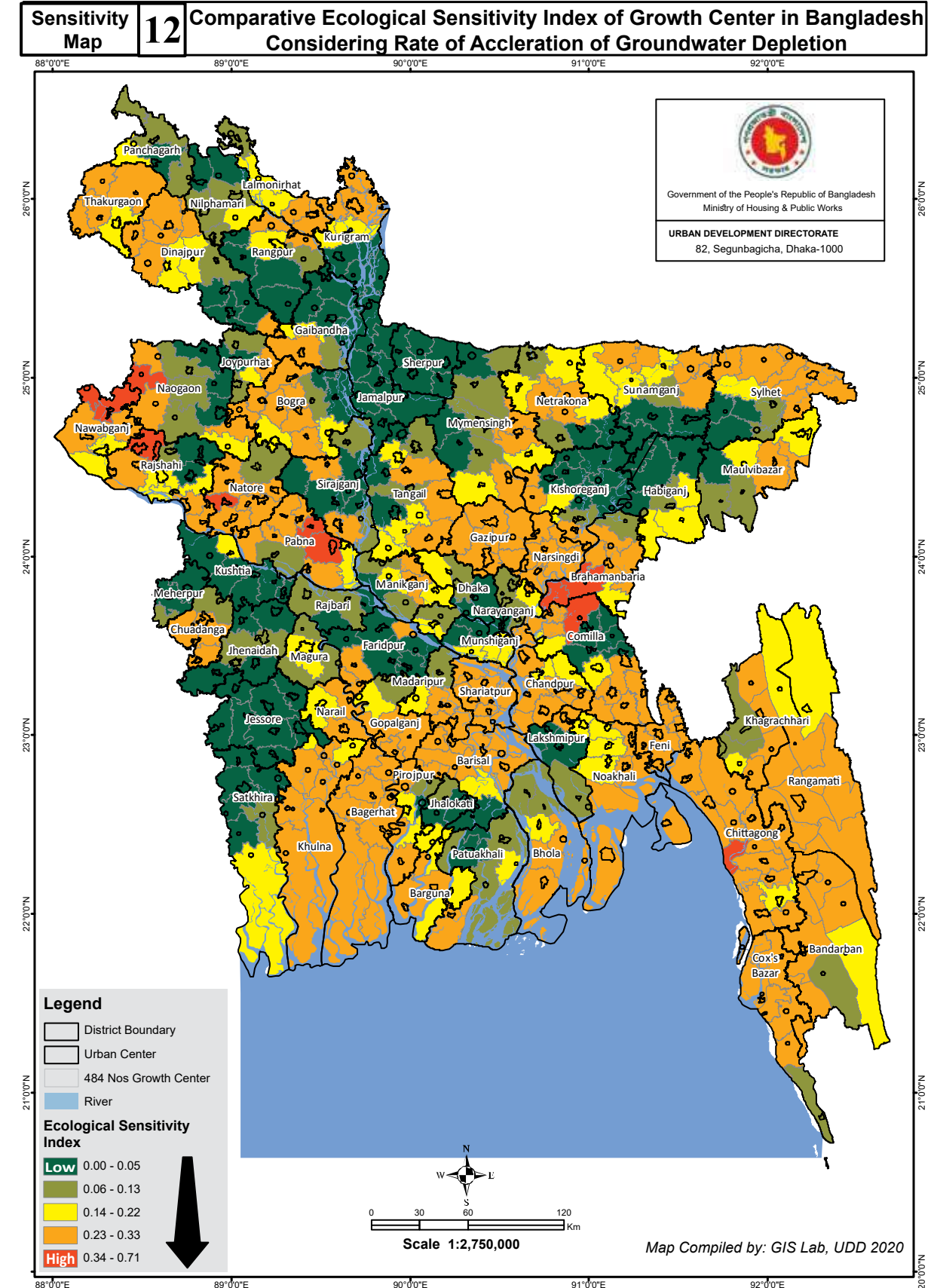
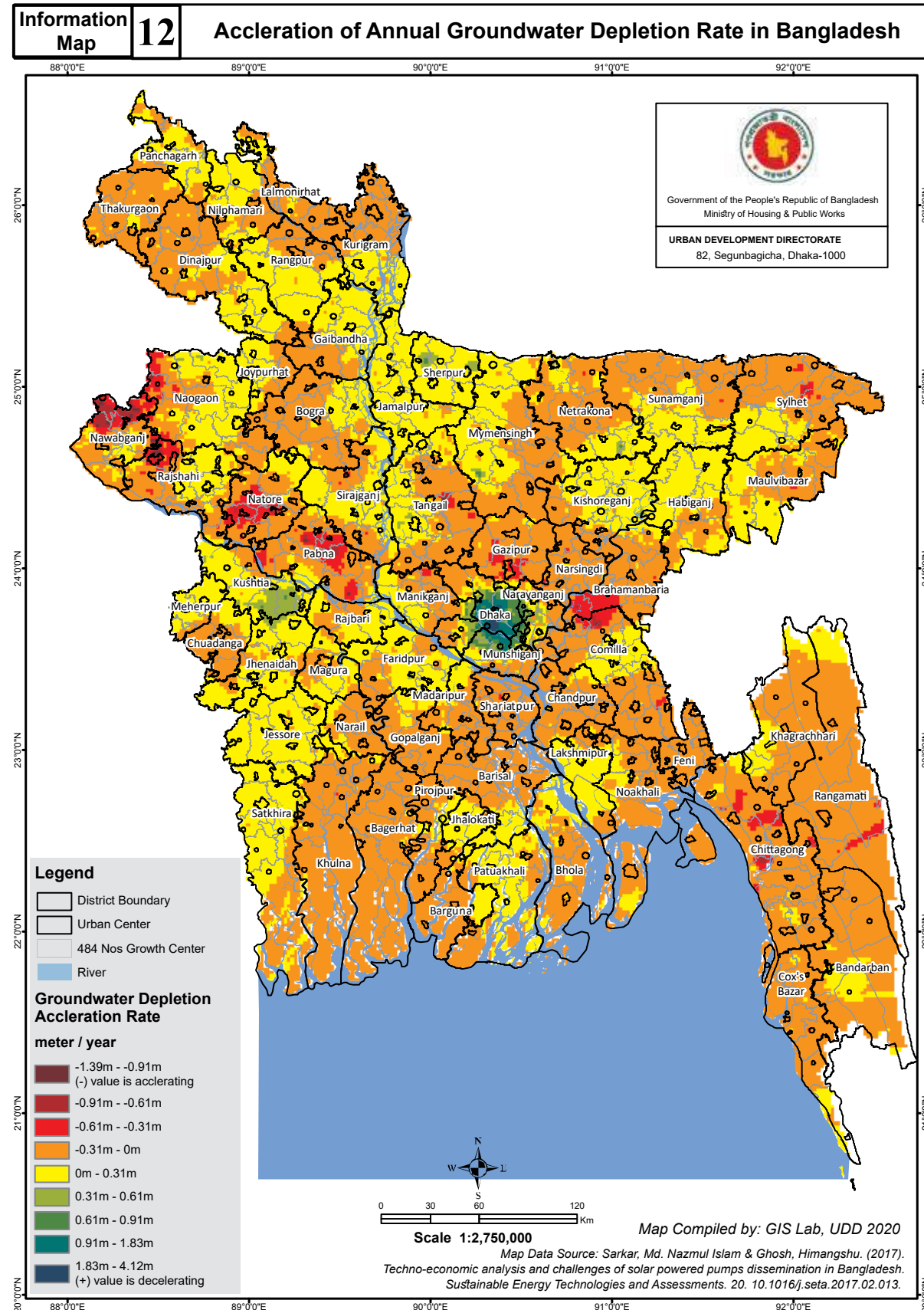
Suitability Chart No 11 (b): Name of Growth Center and Ecological Suitability Considering Ground Water Depletion Rate			
Ground Water Depletion and Ecological Suitability Index Score	Administrative Level	Growth Center (Nos)	Name of Growth Center
	Paurashava_HQ	26	Akhaura, Barura, Begumganj (Chowmuhan), Chauddagam, Derai, Ghatal, Haragacha (Kaunia), Kalihati, Karimganj, Kasba, Kotalipara, Kulaura, Kular Char, Lalmoan, Madhabpur, Mathbaria, Matlab Dakshin, Mirzapur, Mongla, Morrelganj Bagerhat, Nangalkot, Rahanpur (Gomastapur), Ranisankail, Roয়ganj, Sakhipur, Shibganj Nawabganj
	Upazilla_HQ	28	Alfadanga, Bahubal, Balia Kandi, Baliadangi, Barhatta, Belabo, Bhandaria, Brahman Para, Chauhali, Daulatpur Manikganj, Dharampasha, Harirampur, Hatibandha, Kaharole, Kawkhali Rangamati, Kutubdia, Lakhai, Mohammadpur, Morrelganj (Zianagar) Pirojpur, Mujibnagar, Rajoir, Rampal, Sarail, Sarankhola, South Sunamganj, Subarnachar, Thanchi, Wazirpur
Score: 1.47 - 1.99	City Corporation HQ	2	Cumilla Sadar (Cumilla CC), Khan Jahan Ali (KCC)
	District_HQ	7	Faridpur Sadar, Habiganj Sadar & Shayestaganj, Manikganj Sadar, Narail Sadar, Narsingdi Sadar & Madhabdi, Netrokona Sadar, Sherpur Sadar
	Paurashava_HQ	29	Abhaynagar, Banaripara, Bhairab, Bhedarganj, Boalmari, Chakaria, Chandina, Chhagalnaiya, Daganbhuiyan, Debidwar, Ghorashal (Palash), Jaldhaka, Kachua Chandpur, Kamalganj, Katiadi, Lama, Manohardi, Nagarkanda, Nageshwari, Nakla, Nandail, Naria, Phulpur, Senbagh, Shalikh, Shibpur, Sreemangal, Teknaf, Zanjira
	Upazilla_HQ	21	Agailjhara, Alikadam, Basail, Bishwambarpur, Boalkhali, Dashmina, Debiganj, Dighinala, Kanthalia, Kawkhali Pirojpur, Langadu, Lohajang, Nazirpur, Panchhari, Pekua, Phulbari, Rupsa, Sadarpur, Shibhalaya, Sulla, Tahirpur
Score: 2.00 - 3.91	City Corporation HQ	1	Barisal Sadar (BCC)
	District_HQ	13	Bagerhat Sadar, Barguna Sadar, Bhola Sadar, Feni Sadar, Jhalokati Sadar, Khagrachhari Sadar, Kishoreganj Sadar, Madaripur Sadar, Noakhali Sadar, Panchagarh Sadar, Patuakhali Sadar, Pirojpur Sadar, Shariatpur Sadar
	Paurashava_HQ	53	Amtali, Baghai Chhari, Bagherpara, Bakerganj, Bauphal, Betagi, Bhanga, Boda, Burhanuddin, Char Fasson, Chunarughat, Companiganj (Bashurhat) Noakhali Damudya, Daudkandi, Daulat Khan, Dhamrai, Galachipa, Gauripur, Gaurnadi, Goalandaghat, Hatiya, Ishwarganj, Kabirhat, Kalapara & Kuakata, Kalia, Kalkini, Kendua, Madan, Matiranga, Matlab Uttar (Sengarchar), Mehendiganj, Mirsharai (Baraiarhat), Mohanganj, Muladi, Nabinagar, Nalchity, Nalitabari, Nesarabad (Swarupkati), Parshuram, Patharghata, Purbadhala, Raipur, Ramgarh, Ramgati, Raozan, Raypura, Shib Char, Singair, Sitakunda, Sonagazi, Sreebardi, Trishal, Tungipara
	Upazilla_HQ	47	Ashuganj, Atpara, Atwari, Babuganj, Bamna, Bhurungamari, Biral, Burichang, Chitalmari, Delduar, Dhobaura, Dighalia, Dumki, Fakirhat, Fatikchhari, Fulgazi, Ghior, Gosairhat, Haimchar, Haluaghat, Haripur, Hathazari, Hizla, Itna, Jamalganj, Jhenaigati, Kachua Bagerhat, Khaliyajuri, Lakshnichhari, Madhukhali, Mahalchhari, Manikchhari, Manpara, Mirzaganj, Mollahat, Nagarpur, Naniarchar, Nawabganj Dhaka, Pargachha, Rajapur, Saturia, Sreenagar, Tarail, Tarash, Tazumuddin, Tentulia, Terokhada

Data Compiled by GIS Lab UDD, 2020

Index score of each growth center's ecological sensitivity and suitability considering ground water depletion rate in alphabetical order

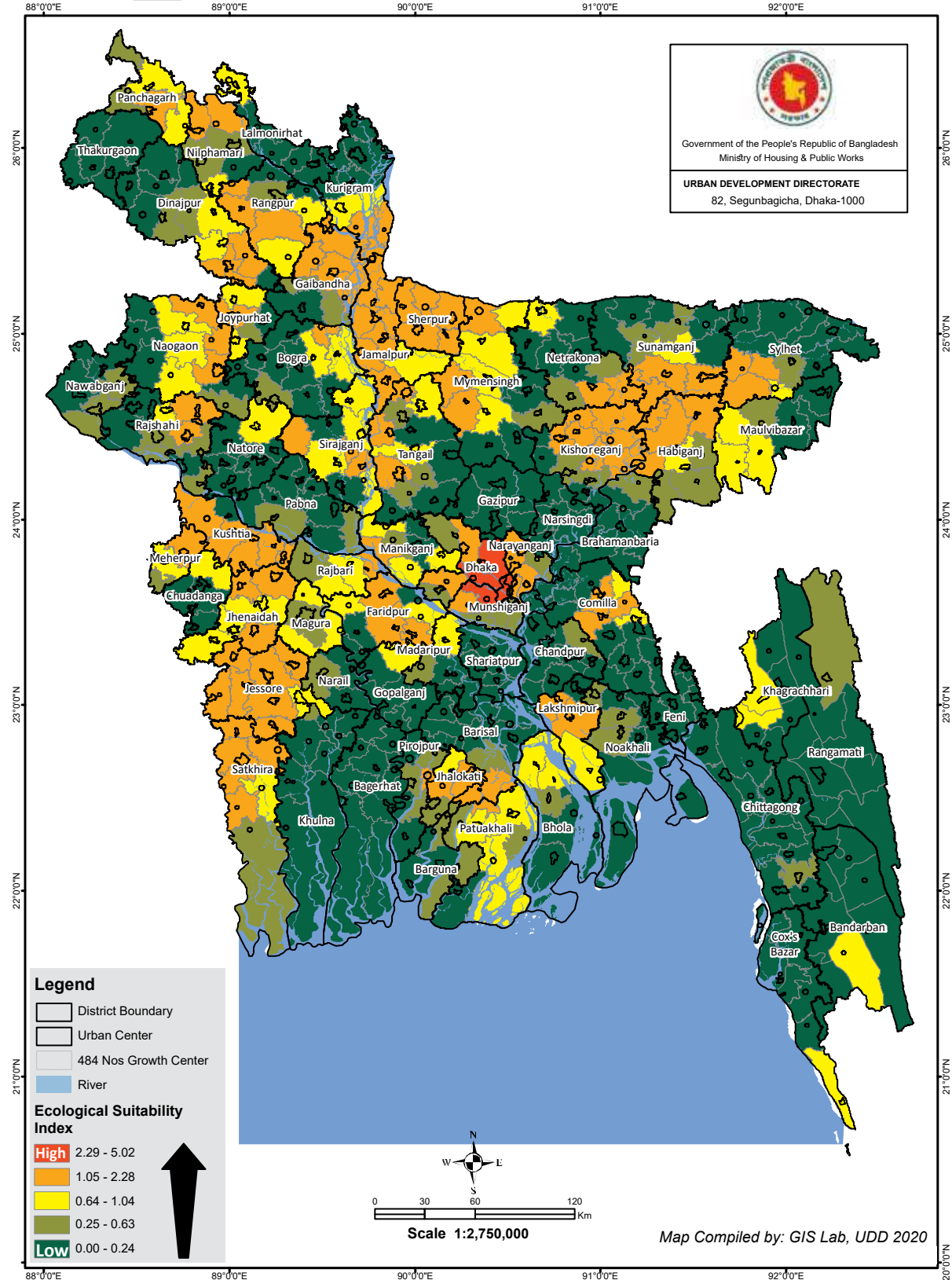
District	Growth center	Sensitivity	Suitability	District	Growth center	Sensitivity	Suitability	District	Growth center	Sensitivity	Suitability											
Bagerhat	Bagerhat Sadar	0.11	2.14	Chittagong	Anowara	1.80	0.00	Faridpur	Nawabganj	1.80	0.00											
	Chitalmari	0.00	2.25		Banshkhali	1.77	0.04		Parbatipur	1.80	0.00											
	Fakirhat	0.04	2.23		Boalkhali	0.47	1.66		Alfadanga	0.87	1.23											
	Kachua Bagerhat	0.10	2.13		Chandanaish	2.04	0.00		Bhanga	0.12	2.14											
	Mollahat	0.00	2.25		Chattogram City (CCC)	1.44	0.45		Boalmari	0.27	1.98											
	Mongla	0.73	1.33		Fatikchhari	0.05	2.19		Char Bhadrasan	1.78	0.06											
	Morrelganj Bagerhat	0.86	1.27		Hathazari	0.06	2.18		Faridpur Sadar	0.67	1.51											
	Rampal	0.88	1.24		Lohagara Chittagong	1.66	0.18		Madhukhali	0.15	2.08											
	Sarankhola	0.86	1.17		Mirsharai (Baraiarhat)	0.00	2.25		Nagarkanda	0.49	1.76											
	Alikadam	0.50	1.72		Patiya	1.48	0.40		Sadarpur	0.42	1.93											
Bandarban	Bandarban Sadar	2.59	0.00	Chuadanga	Rangunia	1.65	0.18	Feni	Chhagalnaiya	0.27	1.99											
	Lama	0.39	1.76		Raozan	0.11	2.11		Daganbhuiyan	0.28	1.95											
	Naikhongchhari	1.55	0.32		Sandwip	1.80	0.00		Feni Sadar	0.11	2.16											
	Rowangchhari	2.89	0.00		Satkania	1.72	0.28		Fulgazi	0.00	2.25											
	Ruma	1.80	0.00		Sitakunda	0.00	2.25		Parshuram	0.10	2.13											
Barguna	Thanchi	0.87	1.16		Comilla	Alamdanga	1.70	0.13	Gaibandha	Sonagazi	0.00	2.25										
	Amtali	0.00	2.25			Chuanganga Sadar	1.80	0.00		Fulchhari	1.80	0.00										
	Bamna	0.02	2.22			Darshana (Damurhuda)	1.75	0.06		Gaibandha Sadar	1.50	0.38										
	Barguna Sadar	0.00	2.25			Jibannagar	1.77	0.04		Gobindaganj	1.80	0.00										
	Betagi	0.00	2.25			Barura	1.09	0.95		Palashbari	1.71	0.12										
Barisal	Patharghata	0.00	2.25	Gazipur		Brahman Para	0.69	1.39	Sadullapur	1.63	0.22											
	Agailjhara	0.60	1.54			Burichang	0.01	2.23	Saghatta	1.80	0.00											
	Babuganj	0.00	2.25			Chandina	0.51	1.61	Sundarganj	1.13	0.83											
	Bakerganj	0.00	2.25			Chauddagam	1.16	0.94	Gazipur	Gazipur Sadar (GCC & Tongi)	3.66	0.00										
	Banaripara	0.47	1.70			Cumilla Sadar (Cumilla CC)	0.24	1.94		Kaliakair	1.82	0.03										
	Barisal Sadar (BCC)	0.00	2.25		Daudkandi	0.08	2.15	Kaliganj Gazipur		2.10	0.66											
	Gaurnadi	0.17	2.09		Debidwar	0.50	1.63	Kapasia		1.68	0.23											
	Hizla	0.00	2.25		Homna	1.82	0.00	Sreepur Gazipur		1.84	0.23											
	Bhola	Mehendiganj	0.00		2.25	Jamalpur	Laksam	1.15	0.81	Gopalganj	Gopalganj Sadar	0.99	1.11									
		Muladi	0.00		2.25		Meghna	1.69	0.14		Kashiani	1.66	0.20									
Wazirpur		0.89	1.17	Monoharganj	1.61		0.23	Kotalipara	0.99		1.09											
Bhola Sadar		0.00	2.25	Muradnagar	1.97		0.18	Muksudpur	1.48		0.42											
Burhanuddin		0.00	2.25	Nangalkot	0.88		1.27	Tungipara	0.12		2.16											
Bogra		Char Fasson	0.00	2.25	Jessore		South Cumilla (Cumilla CC)	0.83	1.24	Habiganj	Ajmiriganj	1.13	0.83									
		Daulat Khan	0.00	2.25			Titash	1.63	0.21		Bahubal	0.71	1.36									
		Lalmohan	0.91	1.15			Chakararia	0.33	1.84		Baniachong	1.75	0.09									
		Manpara	0.01	2.24			Cox's Bazar Sadar	1.75	0.06		Chunarughat	0.17	2.05									
		Tazumuddin	0.05	2.20			Kutubdia	0.67	1.41		Habiganj Sadar & Shayestaganj	0.31	1.86									
	Brahmanbaria	Adamdighi	1.93	0.00		Dhaka	Maheshkhali	1.50	0.37	Jamalpur	Lakhai	0.76	1.30									
		Bogura Sadar	1.80	0.00			Dinajpur	Pekua	0.31		1.86	Madhabpur	0.91	1.12								
		dhunat	1.80	0.00				Ramu	1.79		0.11	Nabiganj	2.37	0.00								
		dhupchanchia	1.82	0.00				Teknaf	0.27		1.94	Bakshiganj	1.61	0.24								
		gabtali	1.80	0.00				Ukhia	1.83		0.00	Dewanganj	1.80	0.00								
kahaloo		1.80	0.00	Dhaka	Dhaka City (DNCC & DSCC)			7.62	0.11	Islampur	1.80	0.00										
nandigram		1.77	0.04		Dhamrai		0.18	2.64	Jamalpur Sadar	1.42	0.48											
sariakandi		1.77	0.04		Dohar		1.44	0.53	Madarganj	1.80	0.00											
Shajahanpur (Majhira) Bogra		1.80	0.00		Keraniganj		4.08	0.60	Melandaha	1.66	0.18											
sherpur		1.40	0.50		Nawabganj Dhaka		0.30	3.35	Sarishabari	1.77	0.04											
Chandpur	Shibganj Bogra	1.80	0.00	Dhaka	Savar	2.59	0.53	Jessore	Abhaynagar	0.47	1.68											
	Sonatola	1.80	0.00		Biral	0.15	2.07		Bagherpara	0.04	2.28											
	Brahmanbaria	Akhaura	0.72		1.35	Birampur	1.80		0.00	Benapole (Sharsha)	2.04	0.00										
		Ashuganj	0.00		2.25	Birganj	1.44		0.45	Chaugachha	1.80	0.00										
		Banchharampur	1.32		0.61	Bochaganj (Setabganj)	1.69		0.14	Jashore Sadar	1.35	0.57										
		Brahmanbaria Sadar	0.72	1.35	Chirirbandar	1.80	0.00	Jhikargachha	1.79	0.03												
		Kasba	0.78	1.27	Dinajpur Sadar	1.16	0.80	Keshabpur	2.23	0.00												
	Chandpur	Nabinagar	0.21	2.06	Fulbari	1.80	0.00	Manirampur	1.79	0.01												
		Nasirnagar	1.44	0.45	Ghoraghat	1.80	0.00	Jhalokati	Jhalokati Sadar	0.00	2.25											
		Sarail	0.91	1.11	Hakimpur	1.80	0.00		Kanthalia	0.23	1.97											
Chandpur Sadar		1.53	0.40	Kaharole	1.05	0.94	Nalchity		0.00	2.25												
Faridganj		1.56	0.37	Khansama	1.76	0.05	Rajapur		0.00	2.25												
Haimchar	0.06	2.20	Dhaka	Dinajpur	Dinajpur	Dinajpur	Jhenaidah		Harinakunda	1.90	0.00											
Haziganj	1.71	0.11						Dinajpur	Dinajpur	Dinajpur	Jhenaidah	Jhenaidaha Sadar	1.80	0.00								
Kachua Chandpur	0.59	1.52										Dinajpur	Dinajpur	Dinajpur	Jhenaidah	Kaliganj Jhenaidah	1.29	0.72				
Matlab Dakshin	0.73	1.34														Dinajpur	Dinajpur	Dinajpur	Jhenaidah	Kotchandpur	1.80	0.00
Matlab Uttar (Sengarchar)	0.15	2.06																		Dinajpur	Dinajpur	Dinajpur
Shahrasti	1.80	0.00	Dinajpur	Dinajpur	Dinajpur	Jhenaidah	Shaikupa															

Ecological Variables : Gw. Depletion Accleration



Ecological Variables : Gw. Depletion Accleration

Suitability Map 12 Comparative Ecological Suitability Index of Growth Center in Bangladesh Considering Rate of Accleration of Groundwater Depletion



Index score and summy table of growth center ecological suitability considering acceleration rate of ground water depletion

Suitability Chart No 12 (a): Growth Center Ecological Suitability Statistics Considering Acceleration Rate of Ground Water Depletion

Acceleration Rate of Ground Water Depletion and Ecological Suitability Index Score	Administrative Level	Growth Center (Nos)	Total Population 2011	(%)	Urban Population 2011	(%)	Area (SqKM)	(%)
Score: 0.00 - 0.24	City Corporation HQ	6	7148352	4.99	5391780	15.94	1287.42	0.88
	District_HQ	21	7540142	5.26	2291382	6.78	6812.19	4.68
	Paurashava_HQ	119	33948430	23.69	4593193	13.58	36753.54	25.25
	Upazilla_HQ	95	16278653	11.36	1304450	3.86	28526.43	19.60
Score: 0.25 - 0.63	City Corporation HQ	3	1801747	1.26	1196494	3.54	681.81	0.47
	District_HQ	10	4045930	2.82	1110790	3.28	3330.78	2.29
	Paurashava_HQ	28	7519977	5.25	1104875	3.27	8915.52	6.13
	Upazilla_HQ	26	5172508	3.61	399866	1.18	7361.85	5.06
Score: 0.64 - 1.04	City Corporation HQ	2	1013259	0.71	311944	0.92	500.02	0.34
	District_HQ	11	3963531	2.77	917977	2.71	3863.34	2.65
	Paurashava_HQ	37	10485664	7.32	1357813	4.01	13580.16	9.33
	Upazilla_HQ	18	3733946	2.61	193481	0.57	5252.89	3.61
Score: 1.05 - 2.28	City Corporation HQ	2	566229	0.40	183355	0.54	239.75	0.16
	District_HQ	11	5423845	3.78	1366335	4.04	3683.11	2.53
	Paurashava_HQ	54	15835383	11.05	2282955	6.75	14669.98	10.08
	Upazilla_HQ	37	7691029	5.37	518573	1.53	9320.03	6.40
Score: 2.29 - 5.02	CAP	1	8747042	6.10	8747042	25.86	305.84	0.21
	City Corporation HQ	1	1323600	0.92	543090	1.61	101.86	0.07
	Upazilla_HQ	2	1082467	0.76	3829	0.01	360.79	0.25
Total		484	143321734	100.00	33819224	100.00	145547.31	100.00

Data Compiled by GIS Lab UDD, 2020

Suitability Chart No 12 (b): Name of Growth Center and Ecological Suitability Considering Acceleration Rate of Ground Water Depletion

Acceleration Rate of Ground Water Depletion and Ecological Suitability Index Score	Administrative Level	Growth Center (Nos)	Name of Growth Center
Score: 0.00 - 0.24	City Corporation HQ	6	Chattogram City (CCC), Gazipur Sadar (GCC & Tongi), Khan Jahan Ali (KCC), Khulna Sadar (KCC), South Cumilla (Cumilla CC), Sylhet Sadar (Sylhet CC)
	District_HQ	21	Bagerhat Sadar, Bandarban Sadar, Barguna Sadar, Bogura Sadar, Brahmanbaria Sadar, Chandpur Sadar, Chuadanga Sadar, Cox's Bazar Sadar, Feni Sadar, Gopalganj Sadar, Khagrachhari Sadar, Kurigram Sadar, Lalmonirhat Sadar, Madaripur Sadar, Manikganj Sadar, Narasingdi Sadar, Natore Sadar, Rajshahi Sadar, Rangamati Sadar, Shariatpur Sadar, Thakurgaon Sadar
	Paurashava_HQ	119	Adamdighi, Akhaura, Atgharia, Bagati Para, Banaripara, Banskhalai, Baraigaram & Banpara, Barlekha, Barura, Beanibazar, Bhairab, Bhaluka, Bhangura, Bhedarganj, Bheramara, Birganj, Boalmari, Bochaganj (Setabganj), Chakaria, Chalna (Dacope), Chandanaish, Char Fasson, Charghat, Chatmohar, Chaudagram, Chhagalnaiya, Chhatak, Companiganj (Bashurhat) Noakhali, Daganbhuiyan, Damudya, Darshana (Damurhuda), Daudkandi, dhunat, dhupchanchia, Faridganj, Faridpur, Gaffargaon, Gauripur, Gaurnadi, Ghatail, Ghoraghat, Ghorashal (Palash), Gobindaganj, Godagari & Kakanhat, Gopalpur (Lalpur), Gurudaspur, Haragacha (Kaunia), Hatiya, Haziganj, Homna, Hossainpur, Ishwardi, Ishwarganj, Jibannagar, Kabirhat, kahaloo, Kalai, Kalapara & Kuakata, Kalia, Kaliakair, Kaliganj Gazipur, Kalkini, Kanaighat, Kasba, Kotalipara, Kulaura, Kuliari Char, Laksam, Lalmohan, Lama, Lohagara Narail, Maheshkhali, Manohardi, Mathbaria, Matlab Dakshin, Matlab Uttar (Sengarchar), Mehendiganj, Mirsharai (Barairhat), Mirzapur, Mongla, Morrelganj Bagerhat, Muladi, Nabinagar, Nageshwari, Nangalkot, Naria, Paikgachha, Pakundia, Parshuram, Patharghata, Patiya, Pirganj Thakurgaon, Purbadhala, Rahanpur (Gomastapur), Ramganj, Rangunia, Ranisankail, Raozan, Raypura, Royganj, Sakhipur, Sandwip, Santhia, Senbagh, Shahjadpur, Shahrasti, sherpur, Shibganj Bogra, Shibganj Nawabganj, Shibpur, Sitakunda, Sonagazi, Sonaimuri, Sreepur Gazipur, Sujaganar, Tanore & mundumala, Tungipara, Zakiganj, Zanjira
Upazilla_HQ	95	Aditmari, Agailjhara, Alfadanga, Anowara, Ashuganj, Atpara, Babuganj, Baliadangi, Bamna, Banchhampur, Barhatta, Barkal, Batiaghata, Belabo, Belai Chhari, Bholahat, Bhurungamari, Biral, Bishwambarpur, Boalkhali, Char Bhadraran, Chitalmari, Companiganj Sylhet, Dharampasha, Dighalia, Dighinala, Dowarabazar, Dumuria, Fakirhat, Fatikchhari, Fulgazi, Gangachara, Gazaria, Gosairhat, Gowainghat, Haimchar, Haripur, Hathazari, Hatibandha, Hizla, Jaintiapur, Jurai Chhari, Juri, Kachua Bagerhat, Kaharole, Kaliganj Lalmonirhat, Kalmakanda, Kapasia, Kaptai, Kashiani, Kawkhali Rangamati, Khansama, Kishoreganj, Koyra, Kutubdia, Lakshmichhari, Langadu, Lohagara Chittagong, Mahalchhari, Manikchhari, Manpura, Meghna, Mollahat, Monoharganj, Morrelganj (Zianagar) Pirojpur, Muradnagar, Nagarpur, Naikhongchhari, Naniarchar, Nazirpur, Panchhari, Pekua, Phulbari, Porsha, Rajarhat, Rajsthal, Rampal, Ramu, Raninagar, Rowangchhari, Ruma, Rupsa, Sapahar, Sarail, Sarankhola, Saturia, Shajahanpur (Majhira) Bogra, Subarnachar, Tahirpur, Tazumuddin, Terokhada, Thanchi, Titash, Ukhia, Wazirpur	

Ecological Variables : Gw. Depletion Accleration

Suitability Chart No 12 (b): Name of Growth Center and Ecological Suitability Considering Acceleration Rate of Ground Water Depletion			
Acceleration Rate of Ground Water Depletion and Ecological Suitability Index Score	Administrative Level	Growth Center (Nos)	Name of Growth Center
Score: 0.25 - 0.63	City Corporation HQ	3	Barisal Sadar (BCC), Rajshahi Sadar (RCC), Rangpur Sadar (Rangpur CC)
	District_HQ	10	Dinajpur Sadar, Magura Sadar, Munshiganj Sadar & Mirkadim, Narail Sadar, Nawabganj Sadar, Nilphamari Sadar, Noakhali Sadar, Pabna Sadar, Pirojpur Sadar, Sunamganj Sadar
	Paurashava_HQ	28	Amtali, Bagha & Arani, Baghai Chhari, Bajitpur, Begumganj (Chowmuhani), Bera, Betagi, Burhanuddin, Chatkhil, Chunarughat, Dhamrai, Dohar, Golabganj, Gopalpur, Jaldhaka, Kachua Chandpur, Katiadi, Kendua, Madhabpur, Mohanganj, Nachole, Nandail, nandigram, Nesarabad (Swarupkati), Pangsha, Poba & Katakhalia & Noahata, Puthia, Satkania
	Upazilla_HQ	26	Araihazar, Atrai, Atwari, Bahubal, Basail, Bhandaria, Chirirbandar, Dashmina, Delduar, Ghior, Jamalganj, Kanthalia, Khetlal, Lohajang, Mirzaganj, Mujibnagar, Nasirnagar, Niamatpur, Palashbari, Phultala, Rajnagar, Rajoir, Saghatta, Shyamnagar, Tentulia, Tongibari
Score: 0.64 - 1.04	City Corporation HQ	2	Cumilla Sadar (Cumilla CC), Mymensingh Sadar (MCC)
	District_HQ	11	Bhola Sadar, Habiganj Sadar & Shayestaganj, Jamalpur Sadar, Jhalokati Sadar, Jhenaidaha Sadar, Maulvi Bazar Sadar, Meherpur Sadar, Panchagarh Sadar, Patuakhali Sadar, Rajbari Sadar, Sirajganj Sadar
	Paurashava_HQ	37	Abhaynagar, Akkelpur, Alamdanga, Bauphal, Daulat Khan, Durgapur Netrakona, Fulbari, gabtali, Galachipa, Kalihati, Kamalganj, Kazipur, Kesharhat (Mohanpur), Kotchandpur, Madhupur, Mahadebpur, Maheshpur, Matiranga, Muksubpur, Nazipur (Patnitala), Panchbibi, Parbatipur, Patgram, Phulpur, Ramgarh, Ramgati, Saidpur, sariakandi, Shalikhia, Shib Char, Singair, Singra, Sreemangal, Teknaf, Trishal, Ulipur, Ullah Para
	Upazilla_HQ	18	Alikadam, Assasuni, Balia Kandi, Brahman Para, Chauhali, Daulatpur Manikganj, Debiganj, Dhobaura, Fenchuganj, Harirampur, Madhukhali, Manda, Mohammadpur, Pirgachha, Pirganj Rangpur, Sadarpur, South Sunamganj, Sreepur Magura
Score: 1.05 - 2.28	City Corporation HQ	2	Bandar (NCC) & Tarabo, South Surma (Sylhet CC)
	District_HQ	11	Faridpur Sadar, Gaibandha Sadar, Jashore Sadar, Joypurhat Sadar, Kishoreganj Sadar, Kushtia Sadar, Lakshimpur Sadar, Naogaon Sadar, Satkhira Sadar, Sherpur Sadar, Tangail Sadar
	Paurashava_HQ	54	Ajmiriganj, Badarganj, Bagherpara, Bakerganj, Belkuchi, Benapole (Sharsha), Bhabanigonj (Baghmara) & Tahirpur, Bhanga, Bhuapur, Birampur, Boda, Chandina, Chaugachha, Debidwar, Derai, Dewanganj, Dhamoirhat, Dhanbari, Domar, Durgapur Rajshahi, Fulbaria, Gangni, Goalandaghat, Hakimpur, Harinakunda, Islampur, Jagannathpur, Jhikargachha, Kalaroa, Kaliganj Jhenaidah, Karimganj, Keshabpur, Khoksa, Kumarkhali, Madan, Madarganj, Manirampur, Melandaha, Mirpur Kushtia, Muktagachha, Nabiganj, Nagarkanda, Nakla, Nalchity, Nalitabari, Raipur, Ruppang & Kanchan, Sarishabari, Savar, Shaikupa, Sonargaon, Sonatola, Sreebardi, Sundarganj
	Upazilla_HQ	37	Austagram, Badalgachhi, Bakshiganj, Balaganj, Baniachong, Bishwanath, Burichang, Char Rajibpur, Chilmari, Daulatpur Kushtia, Debhata, Dimla, Dumki, Fulchhari, Haluaghat, Itna, Jhenaidaha, Kaliganj Satkhira, Kamarkhanda, Kawkhali Pirojpur, Khaliajuri, Lakhai, Mitha Pukur, Mithamain, Nawabganj Dhaka, Nawabganj Dinajpur, Nikli, Rajapur, Raumari, Sadullapur, Shibalaya, Sreenagar, Sulla, Tala, Taraganj, Tarail, Tarash
Score: 2.29 - 5.02	CAP	1	Dhaka City (DNCC & DSCC)
	City Corporation HQ	1	Narayanganj Sadar (NCC) & Shiddhirganj
	Upazilla_HQ	2	Keraniganj, Serajdikhan

Data Compiled by GIS Lab UDD, 2020

Index score of each growth center's ecological sensitivity and suitability considering acceleration rate of ground water depletion in alphabetical order

District	Growth center	Sensitivity	Suitability	District	Growth center	Sensitivity	Suitability	District	Growth center	Sensitivity	Suitability		
Bagerhat	Bagerhat Sadar	1.50	0.00	Chittagong	Anowara	1.61	0.00	Faridpur	Nawabganj	0.04	1.17		
	Chitalmari	1.47	0.02		Banskhali	1.43	0.05		Parbatipur	0.50	0.80		
	Fakirhat	1.50	0.00		Boalkhali	1.61	0.00		Alfadanga	1.49	0.01		
	Kachua Bagerhat	1.31	0.15		Chandanaish	1.40	0.08		Bhanga	0.01	1.19		
	Mollahat	1.50	0.00		Chattogram City (CCC)	2.26	0.06		Boalmari	1.37	0.11		
	Mongla	1.50	0.00		Fatikchhari	1.69	0.10		Char Bhadrason	1.43	0.05		
	Morrelganj Bagerhat	1.36	0.12		Hathazari	1.90	0.00		Faridpur Sadar	0.13	1.09		
	Rampal	1.50	0.00		Lohagara Chittagong	1.44	0.05		Madhukhali	0.27	0.99		
	Sarankhola	1.50	0.00		Mirsharai (Baraiarhat)	1.36	0.13		Nagarkanda	0.22	1.05		
	Atikadam	0.67	0.67		Patiya	1.51	0.00		Sadarpur	0.29	0.98		
Bandarban	Bandarban Sadar	1.50	0.00	Rangunia	1.67	0.00	Feni	Chhagalnaiya	1.53	0.00			
	Lama	1.31	0.15	Raozan	1.77	0.00		Daganbhuiyan	1.50	0.00			
	Naikhongchhari	1.49	0.01	Sandwip	1.50	0.00		Feni Sadar	1.50	0.00			
	Rowangchhari	1.50	0.00	Satkania	1.11	0.32		Fulgazi	1.50	0.00			
	Ruma	1.50	0.00	Sitakunda	1.51	0.00		Parshuram	1.50	0.00			
Barguna	Thanchi	1.27	0.19	Chuadanga	Alamdanga	0.42	0.87	Sonagazi	1.50	0.00			
	Amtali	0.86	0.51		Chuaadanga Sadar	1.47	0.02	Fulchhari	0.01	1.19			
	Bamna	1.50	0.00		Darshana (Damurhuda)	1.52	0.00	Gaibandha Sadar	0.02	1.18			
	Barguna Sadar	1.50	0.00		Jibannagar	1.32	0.15	Gobindaganj	1.49	0.01			
	Betagi	0.96	0.43		Barura	1.25	0.20	Palashbari	1.01	0.39			
Barisal	Patharghata	1.50	0.00	Comilla	Brahman Para	0.28	0.98	Sadullapur	0.18	1.05			
	Agailjhara	1.50	0.00		Burichang	0.00	1.20	Saghatta	0.77	0.59			
	Babuganj	1.50	0.00		Chandina	0.13	1.10	Sundarganj	0.00	1.20			
	Bakerganj	0.01	1.20		Chauddagram	1.64	0.00	Gazipur	Gazipur Sadar (GCC & Tongi)	1.75	0.23		
	Banaripara	1.43	0.06		Cumilla Sadar (Cumilla CC)	0.31	0.95		Katiakair	1.57	0.03		
	Barisal Sadar (BCC)	0.96	0.43		Daudkandi	1.28	0.18		Kaliganj Gazipur	1.57	0.01		
	Gournadi	1.50	0.00		Debidwar	0.17	1.06		Kapasia	1.48	0.04		
	Hizla	1.50	0.00		Homna	1.93	0.00		Sreepur Gazipur	1.46	0.08		
	Bhola	Mehendiganj	1.42		0.06	Laksam	1.49	0.01	Gopalganj	Gopalganj Sadar	1.49	0.00	
		Muladi	1.50		0.00	Meghna	1.47	0.02		Kashiani	1.22	0.22	
Wazirpur		1.50	0.00	Monoharganj	1.50	0.00	Kotalipara	1.45		0.04			
Bhola Sadar		0.33	0.93	Muradnagar	2.17	0.08	Muksudpur	0.43		0.85			
Burhanuddin		1.18	0.26	Nangalkot	1.51	0.00	Tungipara	1.50		0.00			
Bogra		Char Fasson	1.43	0.06	Cox's Bazar	South Cumilla (Cumilla CC)	1.46	0.03	Habiganj	Ajmiriganj	0.00	1.20	
		Daulat Khan	0.48	0.82		Chakaria	1.43	0.06		Bahubal	0.88	0.49	
		Lalmohan	1.42	0.07		Cox's Bazar Sadar	1.47	0.02		Baniachong	0.00	1.20	
		Lalmonirhat	1.46	0.03		Kutubdia	1.50	0.00		Chunarughat	0.82	0.54	
		Manpura	1.50	0.00		Maheshkhali	1.50	0.00		Habiganj Sadar & Shayestaganj	0.57	0.75	
	Brahmanbaria	Tazumuddin	1.50	0.00		Dhaka	Pekua	1.48	0.02	Lakhai	0.00	1.23	
		Adamdighi	1.45	0.04			Ramu	1.52	0.00	Madhabpur	0.91	0.47	
		Bogura Sadar	1.47	0.03			Teknaf	0.50	0.80	Nabiganj	0.00	1.20	
		dhunat	1.24	0.20			Ukhia	1.50	0.00	Bakshiganj	0.00	1.20	
		dhupchanchia	1.50	0.00			Dinajpur	Dhaka City (DNCC & DSCC)	0.06	4.04	Dewanganj	0.00	1.20
gabtali		0.34	0.93	Dhamrai	1.22	0.25		Islampur	0.03	1.17			
kahaloo		1.50	0.00	Dohar	0.97	0.42		Jamalpur Sadar	0.21	1.04			
nandigram		0.92	0.46	Keraniganj	0.00	5.02		Madarganj	0.00	1.20			
sariakandi		0.21	1.03	Nawabganj Dhaka	0.62	1.25		Melandaha	0.02	1.18			
Chandpur		Shahjahanpur (Majhira) Bogra	1.38	0.10	Jessore	Savar	0.39	2.28	Sarishabari	0.00	1.23		
	sherpur	1.32	0.15	Biral		1.43	0.05	Abhaynagar	0.25	1.00			
	Shibganj Bogra	1.50	0.00	Birampur		0.00	1.20	Bagherpara	0.06	1.15			
	Sonatola	0.16	1.07	Birganj		1.46	0.03	Benapole (Sharsha)	0.00	1.20			
	Akhaura	1.50	0.00	Bochaganj (Setabganj)		1.45	0.04	Chaugachha	0.00	1.20			
	Faridpur	Ashuganj	1.50	0.00	Jhalokati	Chirirbandar	0.85	0.52	Jashore Sadar	0.05	1.16		
		Banchharampur	2.54	0.00		Dinajpur Sadar	1.17	0.26	Jhikargachha	0.00	1.20		
		Brahmanbaria Sadar	1.49	0.02		Fulbari	0.28	0.98	Keshabpur	0.09	1.14		
		Kasba	1.25	0.21		Ghoraghat	1.47	0.03	Manirampur	0.02	1.19		
		Nabinagar	2.28	0.00		Hakimpur	0.10	1.12	Jhalokati Sadar	0.40	0.88		
Jamalpur		Nasirnagar	0.73	0.62	Jhenaidah	Kaharole	1.45	0.04	Kanthalia	1.12	0.31		
		Sarail	1.50	0.00		Khansama	1.50	0.00	Nalchity	0.15	1.08		
		Chandpur Sadar	1.38	0.10		Chattogram	Harinakunda	0.07	1.27	Rajapur	0.04	1.17	
		Faridganj	1.34	0.13			Jhenaidaha Sadar	0.53	0.77	Harinakunda	0.07	1.27	
		Haimchar	1.37	0.10			Kaliganj Jhenaidah	0.09	1.13	Jhenaidaha Sadar	0.53	0.77	
	Haziganj	1.50	0.00	Kotchandpur	0.45		0.84	Kaliganj Jhenaidah	0.09	1.13			
	Kachua Chandpur	1.03	0.38	Maheshpur	0.27		0.98	Kotchandpur	0.45	0.84			
	Jessore	Matlab Dakshin	1.26	0.19	Khulna	Shaikupa	0.00	1.34	Maheshpur	0.27	0.98		
		Matlab Uttar (Sengarchar)	1.48	0.02		Moulvibazar	Moulvibazar	Moulvibazar	Moulvibazar	Moulvibazar	Moulvibazar	Moulvibazar	Moulvibazar
		Shahrasti	1.50	0.00									