

Presentation on MOBILISATION REPORT

**BM Pillar Establishment, Physical Feature, Landuse &
Topographical Survey
Package -1**

**“Preparation of Payara - Kuakata Comprehensive Plan Focusing
Eco toourism (PKCPP)”**

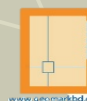
Client:



নগর উন্নয়ন অধিদপ্তর

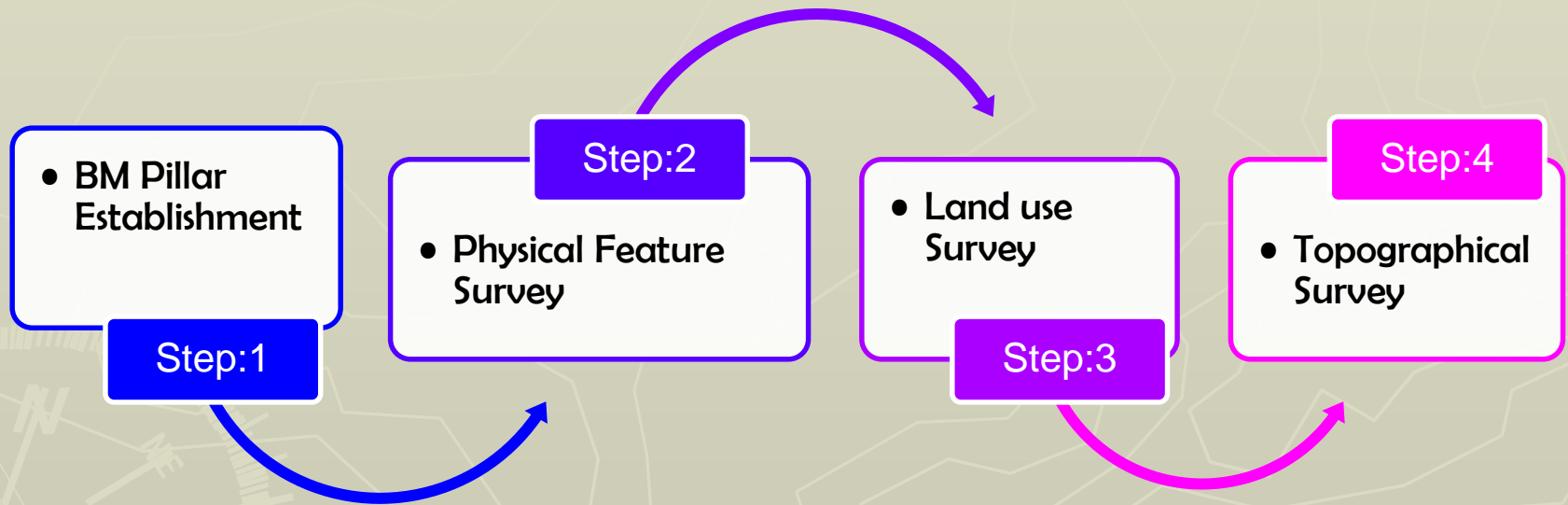
গণপ্রজাতন্ত্রী বাংলাদেশ সরকার

Consultant:



**GEOMARK
LIMITED**

Scope of Work



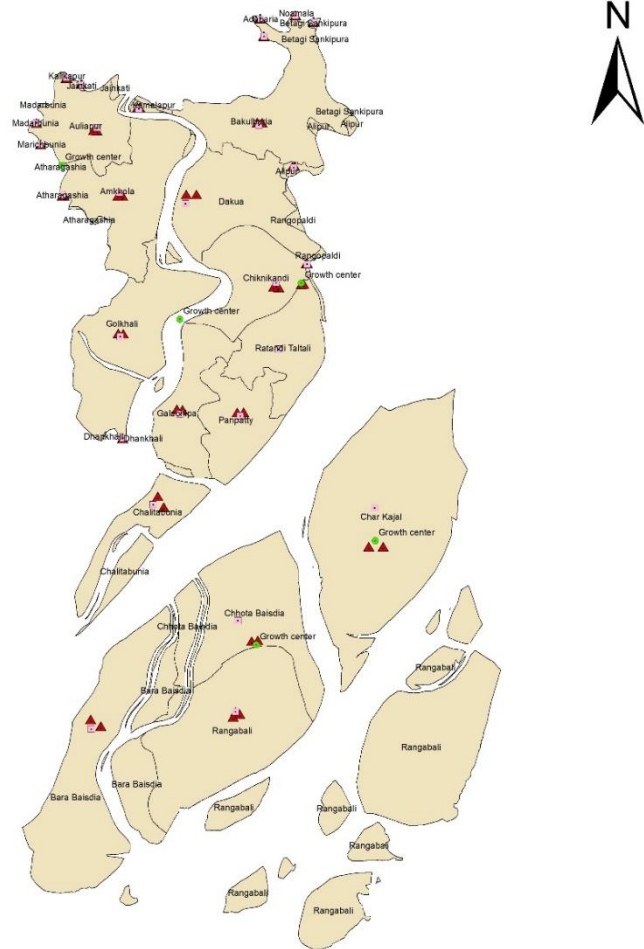
Physical Feature & Land Use Survey

- BM Pillar
- Base Map
- Attribute Collection
- RTK GPS, Drone & Total Station for Structure under trees
- Database link
- Map checking
- Map Update

A yellow, trapezoidal marker with the text "UDD-06" painted on its front face. The marker is set into a hole in the ground, surrounded by soil and some sparse vegetation. The marker has a slightly weathered appearance with some paint chipping at the base.

Figure 10.10 shows the reinforcement details of a square column. The column has a total width of 1'-10" and a total height of 4'-10". The central core has a width of 10" and a height of 10". The reinforcement includes 10mm diameter bars (8" long) at the top, 8mm diameter ties at 8" c/c spacing, and 4-10mm diameter bars at the bottom. The column is shown with a base and a top section labeled A-A. The reinforcement details are shown in Section A-A, which is a square with a width of 10" and a height of 10". The reinforcement includes 4-10mm diameter bars and 8mm diameter ties at 8" c/c spacing.

- I. $f'c = 3500\text{Psi}$ at 28 days on standard cylinder test.
- Proportion of cement : sand: crushed stone chips = 1:1.5:3 of $\frac{3}{4}$ down grade size.
- II. $f_y = 40,000\text{Psi}$.
- III. Curing Period = 21 days.
- IV. Painted by bright yellow enamel paint.
- V. On the surface of Pillar KDA 07 will be inscribed.



Location Map

Legend

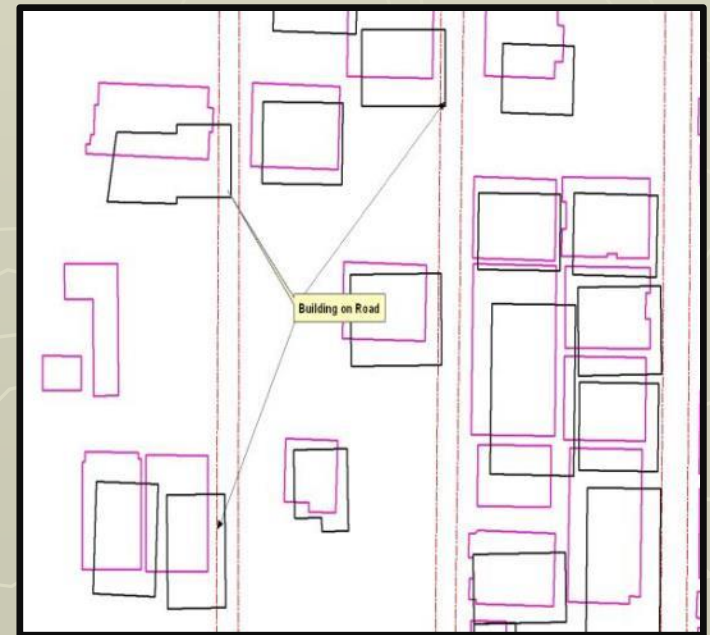
- Package-1
- Kuaka Project Area

Difference with other Surveying Technology



Pink – Photogrammetry 3D Data
Black- 2D Data from 2D Image

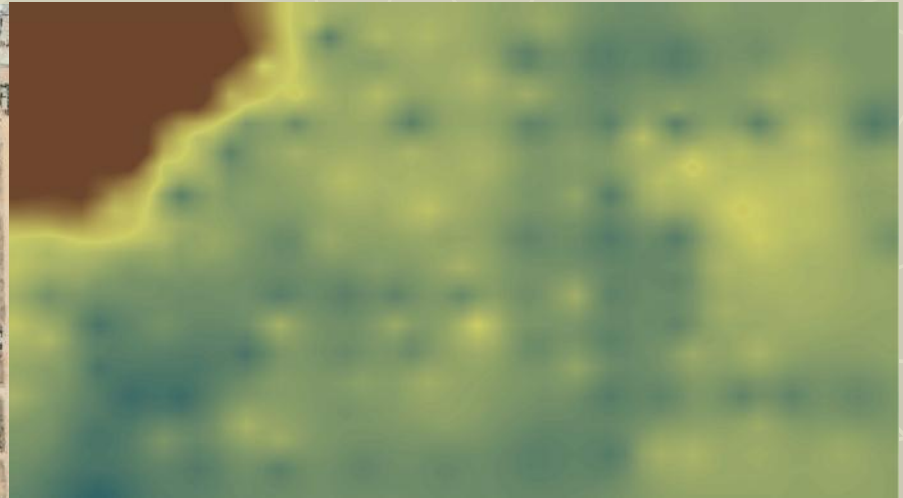
Because of Building Tilting data from 2D image has shifted from its real location



Difference with other Surveying Technology



10x10 meter Grid DEM from Photogrammetry which shows very detail Topography. Which is not possible from ground survey and impossible from 2D image.



DEM from field survey data not 10x10 meter grid. Which is can not show actual topography

Physical Infrastructure Survey

	Physical features	Illustrated
a.	River	Indicate alignment, direction of flow & width
b.	Khal	Indicate alignment, direction & width
c.	Drainage Channels	Natural and improved (with flow direction & width)
d.	Ponds/Tanks/Ditches	Indicate them
e.	Marshlands/Flood Prone Area	Land liable to flooding during monsoon
f.	Building / Structures	Pucca / semi pucca structures & storey
g.	Roads	Pucca/HBB/Kutchra, earth etc.
h.	Bus/Trucks Terminals	Indicate right of way and any areas that are covered by the electricity system.
i.	Flood Works	Embankments, pumps stations, sluice gates length, width, condition of abutments and wing-walls.
j.	Bridge / Culverts	Indicate location, covered area, type of structure
k.	Utility Mains and Row	Electric, gas and telephone etc.
l.	Utility Substations	Electric, Water works, waste disposal and treatment, gas, telephone line etc.
m.	Deep Tube well Stations	R.C.C. DPHE and other deep tube well stations and output
n.	Mauza, Union/Ward, Thana and District Boundary	Administrative boundaries

B. preparation of base Map through Satellite Image will be processing by using Photogrammetric Method:



PHYSICAL FEATURE & LAND USE INFORMATION LOG SHEET

Mirsharai Upazila Development Plan (MUDP)
Urban Development Directorate (UDD)
Consultants: Geomark Ltd. and Tiller

[illegible]

Map Updating

Attribute data and missing map object collected from the field, will be incorporated into the features in this stage

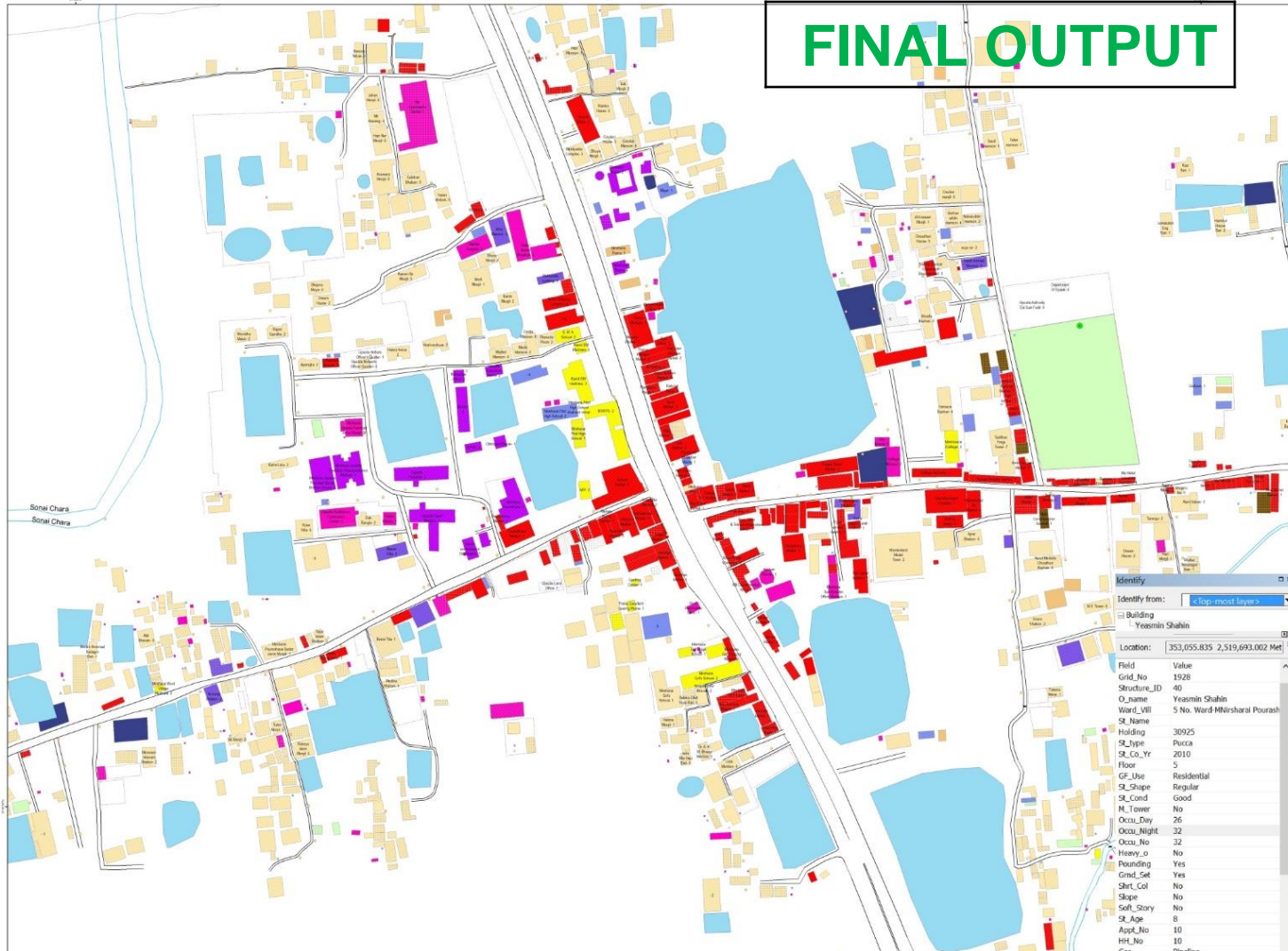


1:1,000
1 cm = 10 m

Mirsharai Upazilla Development Plan (MUDP) - Draft Survey Map, Mirsharai Pourashava Part



FINAL OUTPUT



Meeting with Municipalities

There are two municipalities (Galachipa & Rangabali) in the Galachipa & Rangabali Upazila. By discussion with the municipality member and official it is found that there is a lot of problem in plan implementation.



Photo: Meeting with Mayor at Golachipa Paurasava



Photo: Meeting with Asst. Eng. at Golachipa Paurasava.

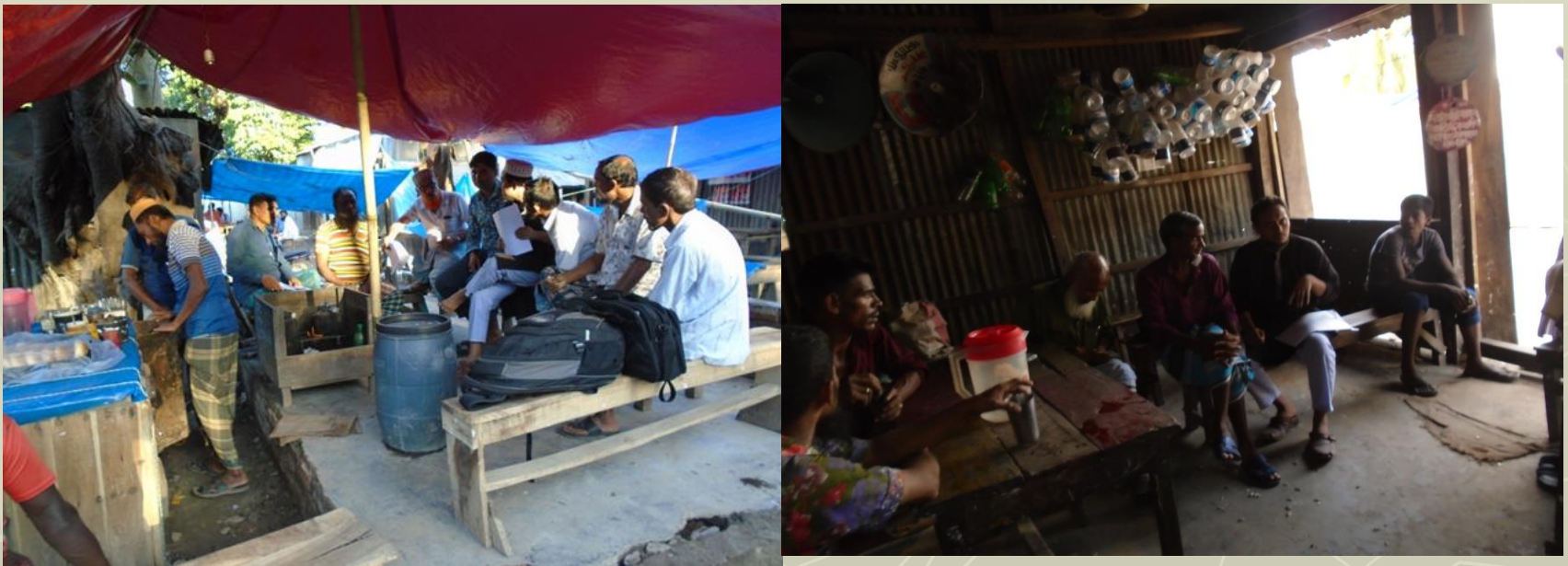
OUT COME FROM THE MEETING

Lack of infrastructure like-road, water supply, electricity etc. is a common phenomenon. In the present situation Galachipa & Rangabali Upazila might be a virtuous economic hub in the economic development of Bangladesh and they are very much enthusiastic for the Galachipa & Rangabali Upazila Development Plan

Tea Stall Meeting at in front Galachipa Paurasava

During reconnaissance survey a tea stall meeting was done to understand the people perception about present situation of the study area.

Participant on Tae Stall meeting



Tea Stall Meeting Output

Local people are very much concern with development. Government has developed an industry in this region that are affecting the local environment. Development should be in a proper manner so more job opportunity created. The local market should be developed.

Focus Group Discussion & Output



Most of the people are concern with road, drain, pure drinking water in the municipality area. Planning should be in a participatory way so that local people can be benefited.

WORK PLAN

No	Activity ¹	Weeks																								
		1	2	3	4	5	6	7	8	9	10	11	12	13	14	15	16	17	18	19	20	21	22	23	24	
1.	Agreement Sign																									
1.	Mobilization Report																									
1.	Inception Report Submission																									
1.	Satellite Image Processing Report																									
1.	Attribute data Collection																									
1.	Map Updating																									
1.	Field Checking																									
1.	DTM,DEM,TIN, Contour Generation																									
1.	Topographical Ground Trurhing Survey																									
1.	Physical Feature Survey																									
1.	Land use survey																									
1.	Data processing, Analysis, Interpretation, presentation, Formulation of working paper and submission of Interim Report																									
1.	Preparation of Draft final report for planning package for the project																									
1.	Preparation of Final Report for Planning package for the project																									
1.	Printing of Final Reports and Maps and Posting in Web Page																									

Thank you...

